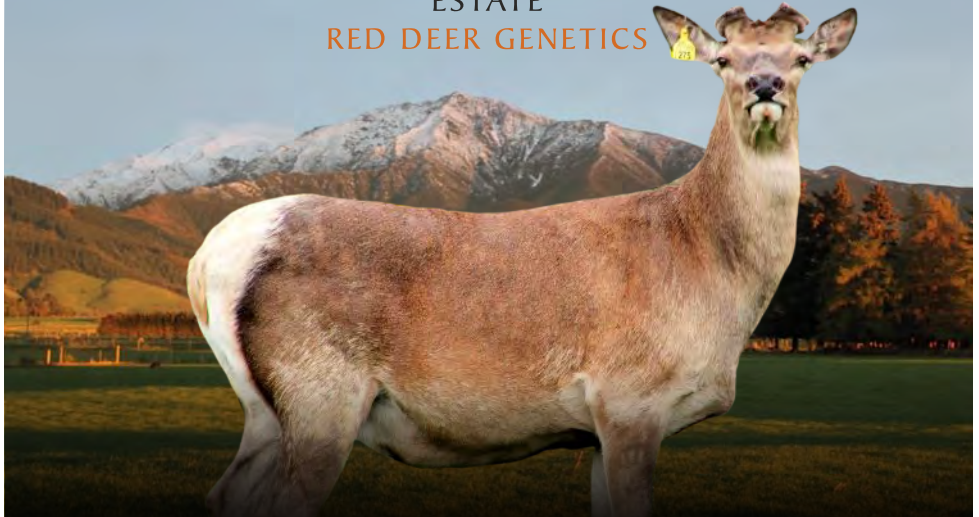




PEEL FOREST  
ESTATE  
RED DEER GENETICS



# Forrester Sire Sale – Venison Genetics

Friday 9th December 2016  
Viewing at 12pm, Auction at 1pm

STEVE BLANCHARD  
PEEL FOREST ESTATE  
1 BRAKE ROAD, RD 22, GERALDINE 7992  
NEW ZEALAND  
(03) 696 3859 / 0800 DEER4U  
steve@peelforestestate.com

[www.peelforestdeergenetics.com](http://www.peelforestdeergenetics.com)

# STEVE'S COMMENTS

## **Welcome to the annual Peel Forest Estate Forrester Sale.**

It is so apparent that we as farmers must run the right type of animal to suit the country we run. Gone are the days of being able to run a one-stop-shop stag and be able to maximise the potential of our land and stock. As the cattle and sheep industry have been doing for years, we must use a dedicated sire to do a specific task, whether it's to produce the right type of replacement females, terminals or velvet. The Forrester bloodlines we will sell in our pre-Christmas sale are bred for hardiness, Johnes Resilience, fertility, pass-on growth to their offspring and ever increasing velvet attributes. Hinds bred from these Forrester Sires will be efficient, hardy, fertile animals carrying a solid base line of growth genes and when mated to the right type of Terminal Sire, will be able to produce high growth, fleshy offspring.

We fawn our Forrester's on hill country and they must perform as commercial deer are expected to. EBV's are important for selection, but just as important are hardiness, reproduction and Johnes resilience. Being able to not only survive under adverse conditions but also regain body weight to conceive early is very important.

The stags we are putting up for sale have been wintered in a large mob of 300 animals on fodder beat and balage. There has been no pampering of these stags and under the right care, will perform remarkably when moved to your property.

The Forrester's this year exceptional. We have seen a great lift in EBV's across the board and the velvet weights are very pleasing so far with 3 cutting over 7kg. As I write to we still have over half to cut but I can assure you there is some nice velvet on the way. The Forrester we passed in at last year's sale (we call him Jobie) just cut a very tidy 8.6kg SA2 head, up from 6kg last year, so we know that these heads go on to produce heavy velvet. We will update our website regularly with stags that haven't been cut for 3yr velvet.

Having quantifiable data like an Angus catalogue is where we see the Forrester bloodlines in the future. Mating this type of female to a B11 Terminal sire to produce the ideal carcass, or keeping your herd Red is your choice. There is a range of growth EBV's represented in the sale that will be ideal for both.

As always we stand behind the stags we sell and if there is anything you wish to know about any of the stags please ring me or call by for a viewing.

Regards,

Steve Blanchard

# JOHNE'S RESILIENCE

## GROUND BREAKING JOHNE'S RESEARCH AT PEEL FOREST ESTATE

The annual cost of Johne's disease to the New Zealand deer industry in 2011 was estimated at least \$8.8 million. Even more importantly, the cost of Johne's disease on farms with heavily affected deer herds can be huge, ruining the profitability of your deer unit.

For the last ten years Peel Forest Estate has made a serious commitment to breeding Johne's Resilient deer on the property and is leading the way with an industry breaking research project with Dr Frank Griffin, Head of Microbiology at the University of Otago.

There have been huge gains in the research by not only reducing the presence of Susceptible animals but more importantly identifying Resilient bloodlines. This breakthrough is even more important due to the fact Colin Mackintosh from Agresearch has identified the powerful heritability of either Susceptibility or Resilience to Johne's in deer. The heritability of the Johne's resilient trait ensures the ability of Peel Forest Estate stags to fight the disease on our client's properties.

In Colin Mackintosh's paper following his trial on heritability he comments "the offspring of the S (Susceptible) sire was significantly more severely affected than those of the R (Resilient) sire. Most of the Resistant, but not the Susceptible, showed evidence of resolving lesions and a reduction in M.A.P (Johne's) after challenge". The paper went on to say "the 5 male offspring gained significantly more weight than the 9 S offspring over the 49 week study (70.3kg versus 59.8kg) despite being 2.8kg lighter at the start". This difference was statistically significant and even more significant because the S sire had a higher breeding value for 12 month weight.

Further to this research Peel Forest Estate are now going to look into the possible improvements to meat yield and quality from progeny with Johne's resilience as well as the proven on farm productivity benefits.

All stock at Peel Forest Estate are continually challenged by Johne's which has resulted in a radical test-cull, natural and genetic selection for Johne's resilience. The heritability of the Johne's resilient trait ensures their ability to fight the disease on your property.



# SIRE STAG CARE AND MANAGEMENT

Sires are the most valuable animal in the deer herd. They carry the genetics that will determine the future production of your herd. The welfare and 12 month health programme cannot be compromised if you wish to get the best from your sires.

## ON ARRIVAL

Stress is at a high level when your new stag arrive at your property. He has left familiar surroundings and mates he has lived with in a social group of around 40 animals of the same age. His arrival can be made a lot less stressful if you follow a few simple rules.

1. Your stag should arrive as early as possible to settle in (preferably before February)
2. Having a few animals in the yard when the stag is unloaded is important.

He should be introduced to a small group of similar age (10-15 animals). Never put with older stags or spikers. Ideally if the hinds he was to mate were nearby he could go directly into the mob. Early fawns should always be the aim.

## THE ROAR

A 3 year old stag will mate 40-50 hinds comfortably if he does not have to travel too far or has no competing stag nearby. When you put your stag out is your choice (the earlier the better) but be aware it can take 5-10 days to be accepted into the mob before he begins mating.

It is possible to mate far more hinds than this but you risk a greater spread over calving and marked loss in body weight and performance in a young stag.

When the stags are taken out of the hinds minimize fighting by preparing a safe paddock (with plenty of feed, shade and water) by taking the most dominant stag (older) first. Avoid a very hot day.

Do not put stags used for mating with ones that have not been as this can cause excessive fighting.

## ANIMAL HEALTH

Your stag will have been drenched and coppered before leaving Peel Forest Estate.

As soon as the sires have settled down after the roar it is good practice to give them a drench, copper and a mineral booster. Hemo 15 is one option. This should be done no later than the end of May. He is at his most vulnerable state and parasites need to be addressed as soon as possible after the roar.

# CONDITIONS FOR SALE

Sale will be conducted in accordance with conditions of sale as set down by South Canterbury Stock and Station Agent's Association, copy of which is exhibited at sale venue, and other terms set out in this catalogue.

Deer will be offered as catalogued, subject only to final draft.

Intending purchasers are required to register at the office prior to commencement of sale to obtain buyer's number and advise appropriate stock and station agent.

Each lot shall become the property and responsibility of the purchaser on the fall of the hammer.

Terms are strictly cash unless prior arrangements are made with one of the selling agents.

Sale will be conducted GST exclusive.

Purchaser must give complete delivery instructions to the office, using one of the delivery instruction sheets in the back of this catalogue and receive delivery docket before removing animals.

The vendor will offer a commission of 4% to non-participating companies. Notice should be given in writing to the vendor 24 hours before the commencement of sale.

## **SPECIAL CONDITIONS**

No animals, embryos or semen sold by Peel Forest Estate or their germplasm, any subsequent progeny or germplasm, including the semen and germplasm of that progeny, may be supplied to any third party without the written permission of Peel Forest Estate.

This condition does not affect normal commercial deer farming or stud farming or their normal sales of semen or embryos as it only applies to entities with the primary function of commercial semen/germplasm activity.

It is a condition of sale of any animals, embryos, or germplasm or semen sold by Peel Forest Estate, that the purchaser agrees to include the following clause as a condition of any subsequent sale or gift of any animal, embryo, semen, germplasm or subsequent progeny or germplasm to a third party – "the purchaser acknowledges that it will not supply any animals, embryos, semen or germplasm to any commercial semen/germplasm marketing or sales entity, and will ensure that this clause is

inserted as a condition of any sale or gift of any animals, embryos, semen or germplasm".

## **SALE**

Animals will be penned by 11.30a.m. on the day of the sale. All stags will be velveted which will remain the property of Peel Forest Estate.

## **CERTIFICATES**

Certificate copies of TB accredited free status, Johnes Clear Test and pedigree will be provided to the purchaser and are available for inspection by all potential clients.

## **GENERAL INSURANCE**

Insurance facilities will be available at the office.

## **HERD HEALTH STATUS**

Peel Forest Estate has completed a re-accreditation TB whole herd test. We have a C10 plus status. All stags have received a veterinarian physical testicular examination.

## **GUARANTEE**

Should a stag prove to be infertile from natural causes it will be replaced. In all events the Seller will not be held responsible for loss of production or consequential losses on any animal sold. Notification of any dissatisfaction must be made within 12 months of the date of sale. Subject to these terms, the vendor makes no warranty about any animal sold.

## **DISCLAIMER**

While these details are prepared with the greatest of care Peel Forest Estate accept no responsibilities for omissions and missed descriptions.



Toby at 4yrs cut 8.2kg SA2

# USING DEERSELECT EBVS

## WHAT IS DEERSELECT?

DEER Select is the genetic evaluation system for the deer industry. DEERSelect can assist you in your purchase by providing an indication of the relative progeny performance of each stag. DEERSelect is a simple system to use. Each animal has an individual "Breeding Value" (or BV) for certain traits which are related to economic profitability. By comparing BVs between animals, you can assess the relative merits of animals for different traits.

## WHAT DO THE DIFFERENT BVs MEAN?

BVs are available for growth and antler traits (the system will be expanded over time to consider other economically important traits). The traits reported are:

## HOW DO BVs RELATE TO PERFORMANCE?

BVs are expressed in actual units of production (kg of liveweight or velvet), so are directly related to expected impacts on performance. An animal passes on half of its genes to its offspring (the other half come from the other parent). So if we take an example of 2 stags, one with a 12-month weight EBV of +12 kg and the other of +8 kg, and mate them to the same group of hinds, the first stag will pass on an impact of +6 kg to his offspring, while the second will pass on +4 kg. Thus we would expect the offspring of the +12 stag to be 2 kg heavier at 12 months of age than those of the +8 stag (i.e. half of the difference in breeding value).

**12-Month Weight (W12BV)** - gives the animal's genetic merit for weight at fifteen months of age in kg. For example, a W12eBV of +10.0 means that the animal carries genes to make it 10 kg heavier than the base population at 12 months of age. For venison production, this is the trait deer farmers are paid on so should receive significant emphasis if purchasing genetics for venison.

**Mature weight (MWTBV)** - This compares the mature weight of hinds (i.e. 3+ years). Again, the values are expressed in kg live-weight. This trait is economically important for both venison and velvet production, as it is an indicator of how much feed is required to maintain an adult animal. Although it is expressed on a breeding hind basis, it is closely related to mature weight of adult stags as well.

Those seeking specialist velvet production genetics should look for low or moderate mature weight, combined with excellent velvet genetics. This will maximise the profit per hectare of your velvet enterprise by producing more velvet per stag and running stags at higher stocking rates.

For venison production, mature weight is somewhat correlated with 12-month weight. This means that if genetics are sought to breed replacement hinds, 12-month weight needs to be balanced with the mature weight to keep hind size (and hence feed costs) at an appropriate level. There may be considerations with handling ability too, depending on your individual preference. Mature weight is not economically important for terminal sires (concentrate on 12-month weight).

**Mature Velvet Weight (MVBW)** - This compares the weight of velvet produced by a mature velvet stag - values are expressed as kg of velvet cut at optimal time.

The MVBW is a significant driver of velvet profitability and should be considered along with likely impacts on velvet grade when comparing animals.

**Eye Muscle Area (EMABV)** - (sq cm) is calculated from measurements from live animal ultrasound scans and from abattoir carcass data. This EBV estimates genetic differences in eye muscle area. More positive EBVs indicate better muscling on animals. Sires with relatively higher EMA EBVs are expected to produce better muscled and higher percentage yielding progeny at the same carcass weight than will sires with lower EMA EBVs

**Weaning Weight (WWTBV)** - The WWTBV gives the animal's genetic merit for weight at weaning, in kg. For example, a BV-WWT of +3.0 means the animal carries genes to make it 3 kg heavier than the base population at weaning.

**Weaning Weight Maternal (WWTMBV)** - Milking ability; what a hind may contribute to her progenies weaning weight through her milk production

# AGENTS

Marcus Adlam	PGGW	0274066756
Graham Kinsman	PGGW	027 422 3154
Ron Schroeder	PGGW	027 432 1299
John Williams	PGGW	027 241 4179
Brian Duggan	PGGW	027 432 4212
Alf Kinzett	CRT	027 241 8919
Max Bensemann	PWA	027 561 0000



*Hillblock where Peel Forest Hinds fawn*





Lot #4 - 7.9kg SA2



Lot #11 - 7.2kg SA2



Lot #3 - 7.3kg SA2





PEEL FOREST  
ESTATE  
RED DEER GENETICS

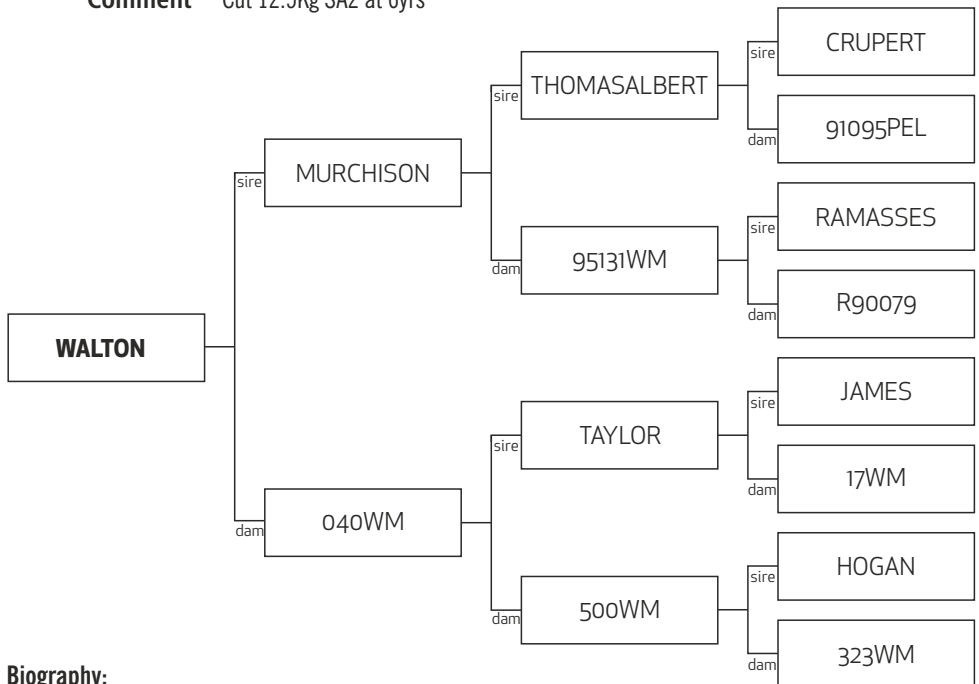


## Reference Animals

Walton • Johnboy • Jeff • Toby • Jefferson

# Walton

<b>Birthdate</b>	2005
<b>BREED Type</b>	Pure English - Warnham
<b>W12BV</b>	4.47
<b>MVWTBV</b>	2.88
<b>MWTBV</b>	3.18
<b>WWTBV</b>	2.62
<b>WWTMBV</b>	0.86
<b>EMAcEBV</b>	1.57
<b>2yr Weight</b>	195Kg
<b>3yr Velvet</b>	6.88Kg
<b>2yr Velvet</b>	N/A
<b>Comment</b>	Cut 12.5Kg SA2 at 6yrs

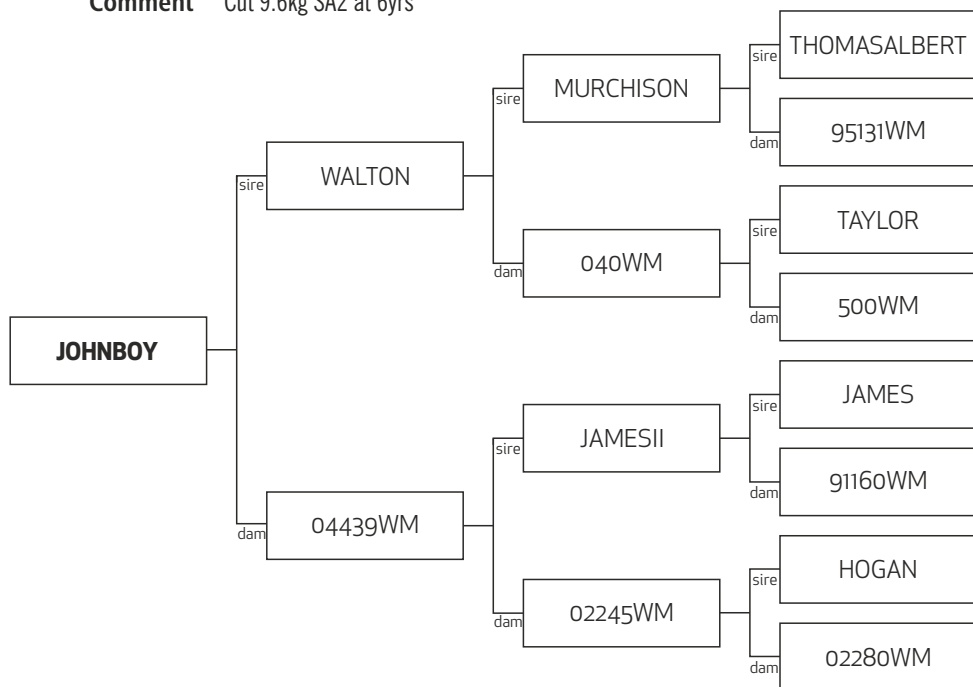


## Biography:

Walton is undoubtedly one of the most outstanding stags to ever come out of the Windermere stud. He is a Pure Warnham with very clean, heavy velvet with excellent heritability leaving some powerful young stags in his wake. Walton won the National Velvet Competition as a 2-year-old cutting an impressive 5.8kg of SA velvet. At 3 years, he cut 8.06kg SA2 and 4 years 9.9kg of SA2. Last year he cut 12.6kg SA2 of very clean velvet. His EBV's are very impressive. Not only does he have growth, his Velvet and Eye Muscle Area EBV's are some of the highest in the country.

# Johnboy

**Birthdate** 2002  
**BREED Type** Pure English - Warnham  
**W12BV** 6.94  
**MVWTBV** 1.72  
**MWTBV** 3.27  
**WWTBV** 3.27  
**WWTMBV** 1.08  
**EMAcBV** 0.86  
**15 Month Weight** 112Kg  
**3yr Velvet** 6.88Kg  
**2yr Velvet** NA  
**Comment** Cut 9.6kg SA2 at 6yrs

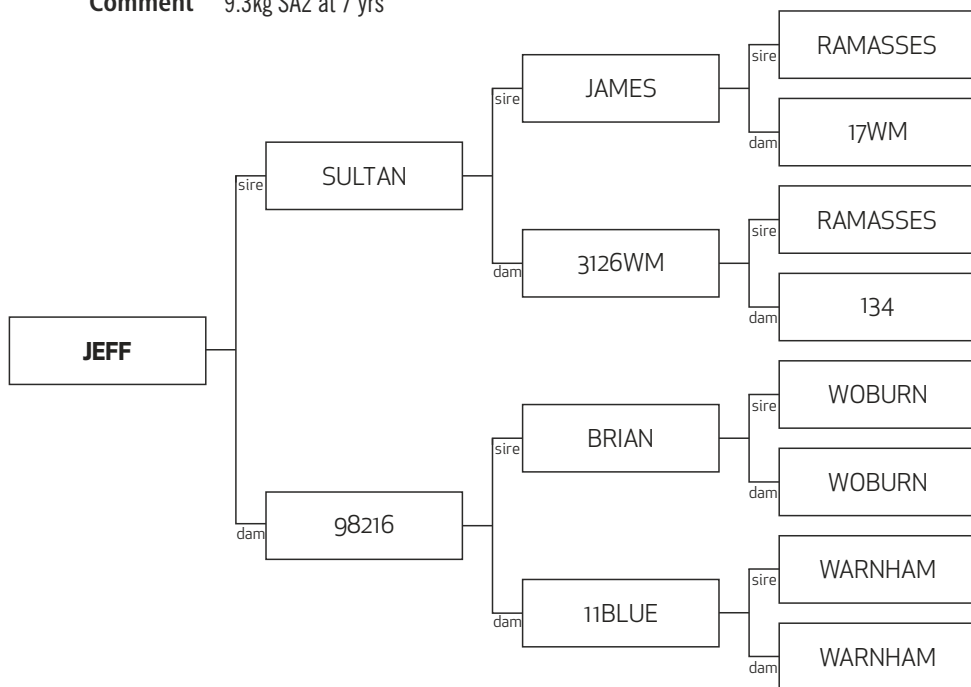


## Biography:

Johnboy is a stunning Walton son out of a top Windermere Stud JAMESII daughter. With over 90 progeny on the ground. Johnboy is leaving some amazing young stags in his wake. With solid 12 month growth rates and huge EBV's for velvet this Sire could outdo his father with pass on ability. He epitomises the direction Peel Forest is striving for. Clean, thick, attractive velvet with stocky English bodies. Johnboy is a hardy English stag with excellent temperament.

# Jeff

<b>Birthdate</b>	2002
<b>BREED Type</b>	Pure English - Warnham/Woburn
<b>W12BV</b>	15.14
<b>MVWTBV</b>	1.12
<b>MWTBV</b>	14.48
<b>WWTBV</b>	6.53
<b>WWTMBV</b>	-0.36
<b>EMAcEBV</b>	0.48
<b>Yearling Weight</b>	141Kg
<b>3yr Velvet</b>	N/A
<b>2yr Velvet</b>	3.72kg
<b>Comment</b>	9.3kg SA2 at 7 yrs

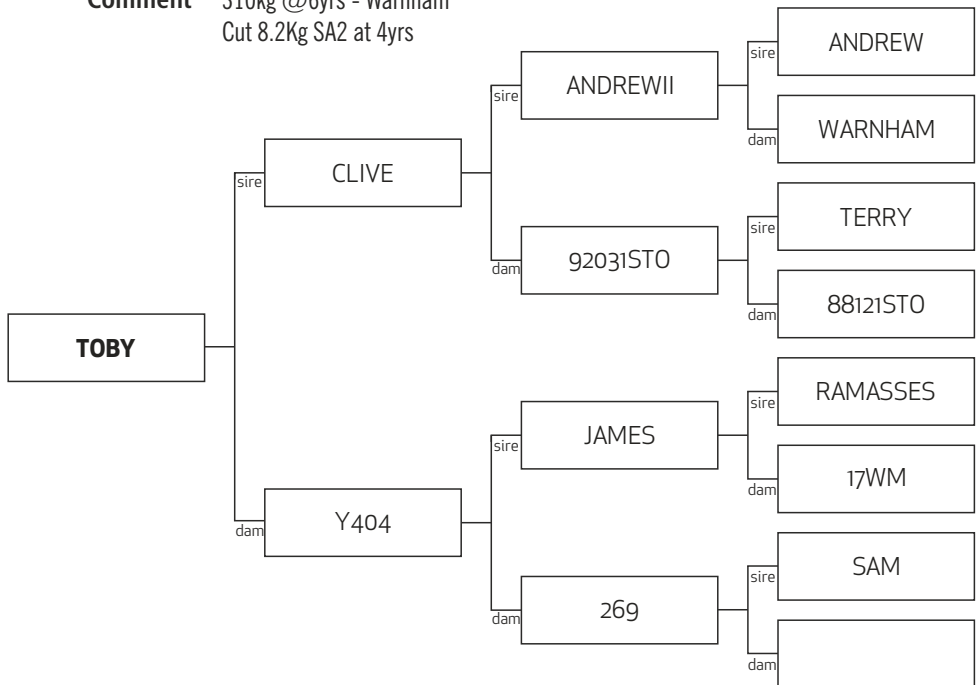


## Biography:

Jeff is a very nice bodied Sultan son with an extremely quiet temperament. Cut a very nice head of 3.72 A2S at two years. He weighed a magnificent 141kg at 12 months. He is a very fine sire with top growth genetics and antlers. Jeff is the second biggest English yearling we have ever bred. His EBV for 12 months growth is exceptional and continues to rise showing his amazing potency.

# Toby

**Birthdate** 1998  
**BREED Type** Pure English - Warnham  
**W12BV** 11.88  
**MVWTBV** 0.58  
**MWTBV** 7.87  
**WWTBV** 9.79  
**WWTMBV** 0.44  
**EMAcBV** -1.1  
**Yearling Weight** N/A  
**3yr Velvet**  
**2yr Velvet**  
**Comment** 310kg @6yrs - Warnham  
Cut 8.2Kg SA2 at 4yrs

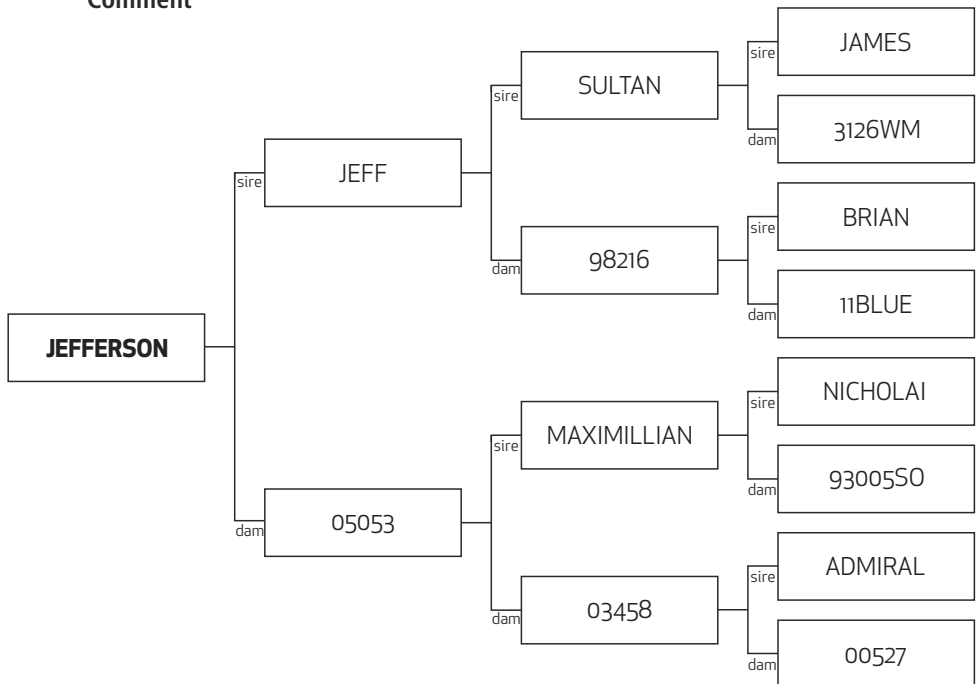


## Biography:

Toby is a big powerful English Sire and features strongly in the Forresters. He is an incredibly important bloodline in that he had great carcass conformation, exceptional temperament and adds growth to whatever he is bred to. His pass-on ability is second to none and a toby stag is so easy to identify. He has all the hallmarks of an elite stag. His progeny are performing extremely well for clients and is a sort after bloodline. He is a big heavy English stag weighing 310kg at 6 yrs and cut 8.2kg at 4 years.

# Jefferson

**Birthdate** 2010  
**BREED Type** 5/8 English, 3/8 Euro  
**W12BV** 19.73  
**MVWTBV** 0.83  
**MWTBV** 19.79  
**WWTBV** 11.58  
**WWTMBV** 0.22  
**EMAcEBV** 0.07  
**Yearling Weight** 153.5KG  
**3yr Velvet** 5.0  
**2yr Velvet** 3.2  
**Comment**



## Biography:

Jefferson, one of Jeff's outstanding progeny that we decided to keep, is producing some seriously nice looking stags. They are very blocky, muscular animals and are cutting good velvet. He has over 100 progeny on the ground now and we are never disappointed with what comes through the shed. If you are looking for serious growth rates and nice temperament to go with it Jefferson is your man.

# STAGS FOR SALE

NB: Yearling Weights were done on the 25th November 2014

Lot	TAG	W12BV	MVWTBV	MWTBV	WWTBV	WWTMBV	EMAceBV	Y/Weight	3yr Vt	2yr Vt	Breed
1	131267	22.95	0.78	18.92	14.69	0.44	0.14	127.5		3.2	1/2 ENGLISH, 1/2 EURO
2	131330	20.19	2.37	16.74	12.04	0.1	-0.24	123	6.2	5.2	3/4 ENGLISH, 1/4 EURO
3	131460	10.82	1.55	9.46	4.22	-0.7	0.33	120	7.3	4	6/8 ENGLISH, 2/8 GERMAN
4	13771	9.62	2.83	6.54	5.01	0.1	0.33	119	7.9	5.2	6/8 ENGLISH, 2/8 GERMAN
5	131670	20.01	1	16.26	11.44	-0.08	0.27	144.5	5.4	3.2	6/8 ENGLISH, 2/8 GERMAN
6	131665	16.8	0.07	12.58	9.35	1.17	-0.01	131.5	3.2	2.2	6/8 ENGLISH/ 2/8 GERMAN
7	131335	10.69	1.46	10.42	6.35	-0.29	0.1	105.5	6.6	3.8	5/8 ENGLISH, 3/8 EURO
8	131672	16.87	1.27	12.4	11.1	0.64	0.21	131	4.6	3.6	6/8 ENGLISH/ 2/8 GERMAN
9	13792	14.14	0.18	10.27	7.65	0.54	0.34	132	5.5	2.2	PURE ENGLISH
10	131673	15.41	1.32	12.52	10.55	0.71	0.24	126	5.4	3.6	6/8 ENGLISH, 2/8 EURO
11	13961	8.99	1.18	6.85	2.82	-0.02	0.8	102.5	7.2	3.2	5/8 ENGLISH, 3/8 EURO
12	131591	17.62	0.02	12.93	7.51	-1.46	0.66	112		2.4	1/2 ENGLISH, 1/2 GERMAN
13	13343	12	1.71	9.65	6.22	0.3	0.23	120.5		4	PURE ENGLISH
14	13269	13.99	0.65	12.13	6.89	-0.06	0.06	92.5		2.6	PURE ENGLISH
15	13627	12.87	1.02	8.84	6.98	0.39	0.52	119.5		3	PURE ENGLISH
16	13852	11.4	0.39	9.44	4.69	-0.84	0.48	123		2.8	PURE ENGLISH
17	13212	11.98	0.45	10.69	6.72	0.12	-0.13	105.5	4	2.2	PURE ENGLISH
18	13646	11.76	1.39	7.68	6.98	1.15	0.49	121		3.6	PURE ENGLISH
19	13098	10.3	0.31	6.44	6.64	-0.43	-0.31	124	4.4	2.8	PURE ENGLISH
20	13805	9.71	0.23	8.95	2.72	-0.55	0.18	114	4.2	2.6	PURE ENGLISH
21	131444	14.96	0.89	12.04	8.09	-0.31	-0.04	123	5.7	3	3/4 ENGLISH, 1/4 GERMAN
22	131445	11.73	0.2	10.71	5.14	-0.99	-0.28	111		2.2	6/8 ENGLISH, 2/8 GERMAN
23	13348	14.86	-0.03	10.45	10.93	0.07	-0.21	129	3.9	2.2	5/8 ENGLISH, 3/8 EURO
24	131252	12.78	0.87	11.18	8.48	-0.34	-0.25	103.5	4.5	3	6/8 ENGLISH, 2/8 EURO
25	131329	11.8	0.51	9.27	8.24	-0.64	0.24	106		2.8	1/2 ENGLISH, 1/2 GERMAN
26	13858	9.95	0.42	9.48	3.47	1.06	0.24	115		2.6	PURE ENGLISH
27	131458	14.32	2.1	12.96	7.87	0.14	0.05	115.5	2.9	4.6	6/8 ENGLISH, 2/8 EURO
28	13422	10.11	1.49	5.54	6.72	1.49	0.28	114.5		3.8	6/8 ENGLISH, 2/8 GERMAN
29	131666	10.54	0.36	9.68	5.88	-0.68	0.75	120	3.3	2.6	5/8 ENGLISH, 3/8 EURO
30	131660	9.53	0.69	6.52	6.98	-0.05	-0.3	119.5	4.9	3.2	7/8 ENGLISH, 1/8 GERMAN



# STAGS FOR SALE

NB: Yearling Weights were done on the 25th November 2014

Lot	TAG	W12BV	MVWTBV	MWTBV	WWTBV	WWTMBV	EMAcBV	Y/Weight	3yr Vt	2yr Vt	Breed
31	131056	8.19	-0.53	8.52	2.96	-0.12	0.08	100	4.3		PURE ENGLISH
32	13125	7.89	1	5.69	5.65	-0.23	-0.26	118	4.8	HA	PURE ENGLISH
33	131452	11.82	-0.29	10.67	6.04	-0.18	-0.44	108.5		1.6	PURE ENGLISH
34	13795	8.13	1.04	6.08	3.53	0.32	0.52	109		3	7/8 ENGLISH, 1/8 GERMAN
35	13208	7.38	0.81	7.2	3.02	-0.49	0.32	102		3.2	PURE ENGLISH
36	13861	7.37	0.53	6.75	2.27	-0.58	-0.07	105.5	4.5	2.6	PURE ENGLISH
37	131349	7.2	0.68	2.14	6.67	-0.06	-0.21	105	4.5	3.2	PURE ENGLISH
38	131592	6.92	0.57	2.55	3.55	-0.43	-0.18	103.5	5.2		PURE ENGLISH
39	13602	6.5	1.33	4.14	3.04	0.07	0.46	107		3.2	PURE ENGLISH
40	13610	6.36	0.88	4.16	3.91	0.04	0.6	116.5		2.6	PURE ENGLISH
41	131325	18.12	0.55	15.77	12.39	0.84	0.08	115.5	3.5	2.8	1/2 ENGLISH, 1/2 EURO
42	131436	17.34	0.43	11.79	10.6	-0.07	-0.13	124.5	4.3	2.8	1/2 ENGLISH, 1/2 EURO
43	131268	11.3	0.86	10.69	7.21	0.17	-0.28	103.5	5	3.2	5/8 ENGLISH, 3/8 EURO
44	13854	8.81	0.9	6.76	3.47	0.25	0.69	109		3.4	5/8 ENGLISH, 2/8 GERMAN
45	13271	8.45	0	5.21	3.67	-1.37	0.22	110		2.2	PURE ENGLISH
46	131332	8.26	0.77	9.09	4.75	-0.97	-0.02	98.5	4.9	2.8	6/8 ENGLISH, 2/8 EURO
47	13605	7.31	0.44	4.76	5.36	0.73	0.49	102		2	6/8 ENGLISH, 2/8 GERMAN

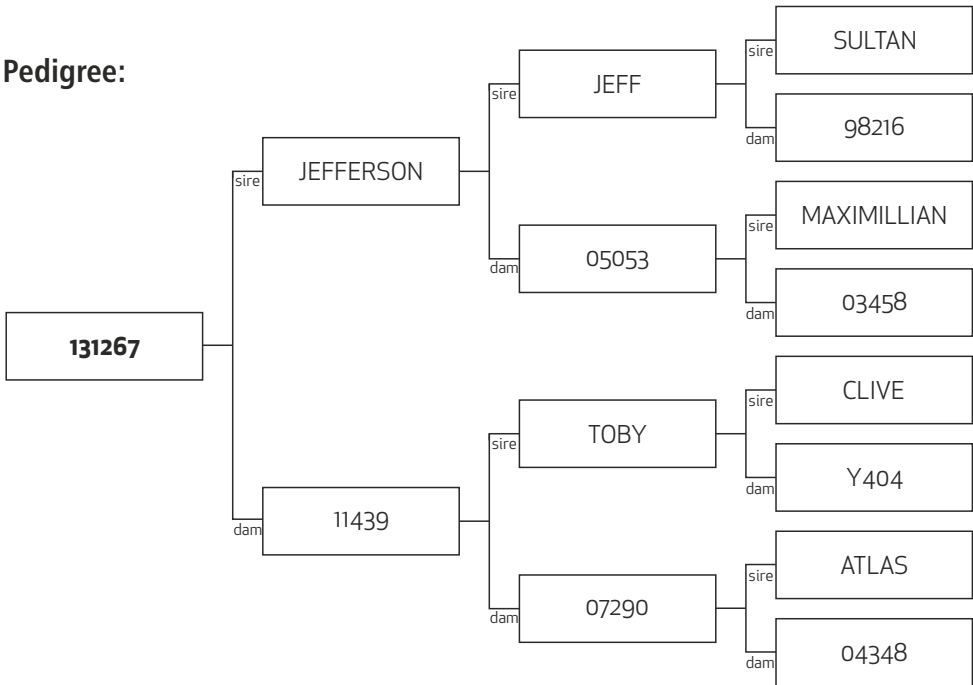
# Lot # 1 - 131267

<b>BREED Type</b>	1/2 ENGLISH, 1/2 EURO
<b>W12BV</b>	22.95
<b>MVWTBV</b>	0.78
<b>MWTBV</b>	18.92
<b>WWTBV</b>	14.69
<b>WWTMBV</b>	0.44
<b>EMAceBV</b>	0.14
<b>Yearling Weight</b>	127.5 Kg (25/11/14)
<b>3yr Velvet</b>	
<b>2yr Velvet</b>	3.2 Kg A2S
<b>Comment</b>	



**PEEL FOREST**  
ESTATE  
RED DEER GENETICS

**Pedigree:**



**Sale Weight:**

**Price:**

**Buyer:**

**KEY:** W12eBV - Weight at 12 months of age, MVWeBV - Mature velvet weight, MWTeBV - Mature hind weight, WWTeBV - Weaning weight, WWTMeBV - Weaning weight maternal (milking ability), EMACeBV - Eye muscle area

# Lot # 2 - 131330

**BREED Type** 3/4 ENGLISH, 1/4 EURO

**W12BV** 20.19

**MVWTBV** 2.37

**MWTBV** 16.74

**WWTBV** 12.04

**WWTMBV** 0.1

**EMAceBV** -0.24

**Yearling Weight** 123 Kg (25/11/14)

**3yr Velvet** 6.2 Kg SA2

**2yr Velvet** 5.2 Kg SA2

**Comment**

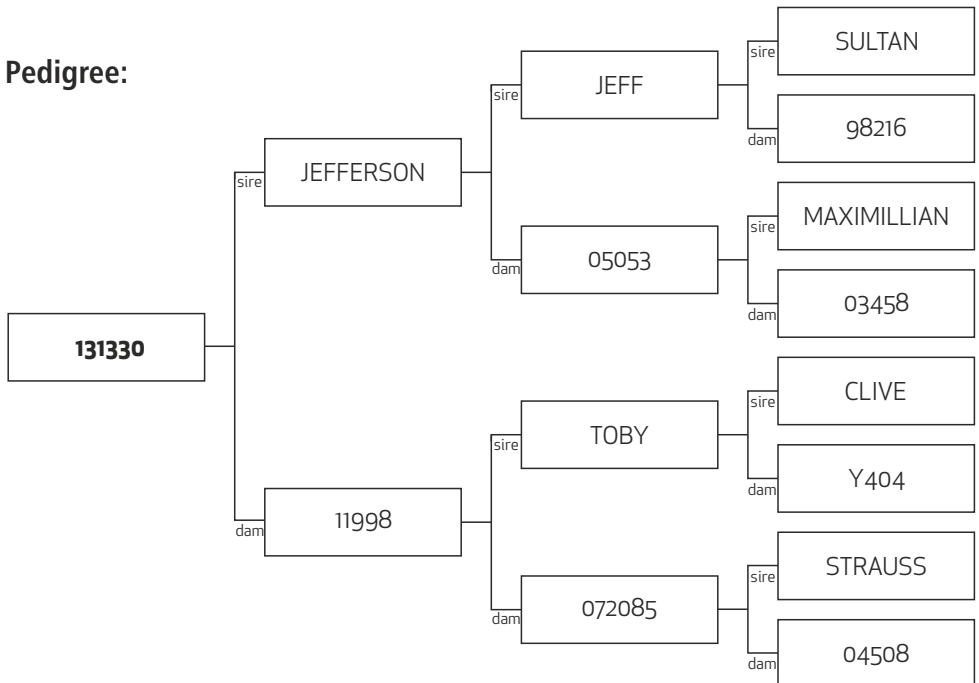


## PEEL FOREST

ESTATE

RED DEER GENETICS

### Pedigree:



**Sale Weight:**

**Price:**

**Buyer:**

**KEY:** W12eBV - Weight at 12 months of age, MVWeBV - Mature velvet weight, MWTeBV - Mature hind weight, WWTeBV - Weaning weight, WWTMeBV - Weaning weight maternal (milking ability), EMACeBV - Eye muscle area

# Lot # 3 - 131460

**BREED Type** 6/8 ENGLISH, 2/8 GERMAN

**W12BV** 10.82

**MVWTBV** 1.55

**MWTBV** 9.46

**WWTBV** 4.22

**WWTMBV** -0.7

**EMAceBV** 0.33

**Yearling Weight** 120 Kg (25/11/14)

**3yr Velvet** 7.3 Kg SA2

**2yr Velvet** 4 Kg A2S

**Comment**

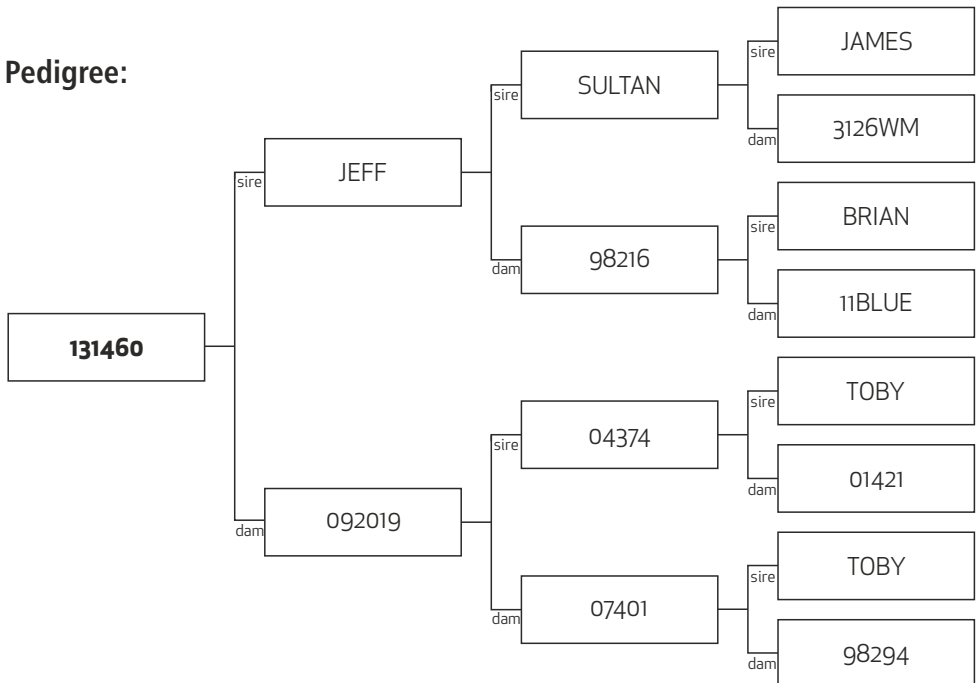


## PEEL FOREST

ESTATE

RED DEER GENETICS

### Pedigree:



**Sale Weight:**

**Price:**

**Buyer:**

**KEY:** W12eBV - Weight at 12 months of age, MVWeBV - Mature velvet weight, MWTeBV - Mature hind weight, WWTeBV - Weaning weight, WWTMeBV - Weaning weight maternal (milking ability), EMACeBV - Eye muscle area

# Lot # 4 - 13771

**BREED Type** 1/2 ENGLISH, 1/2 EURO

**W12BV** 9.62

**MVWTBV** 2.83

**MWTBV** 6.54

**WWTBV** 5.01

**WWTMBV** 0.1

**EMAceBV** 0.33

**Yearling Weight** 119 Kg (25/11/14)

**3yr Velvet** 7.9 Kg SA2

**2yr Velvet** 5.2 A3S A2S

**Comment**

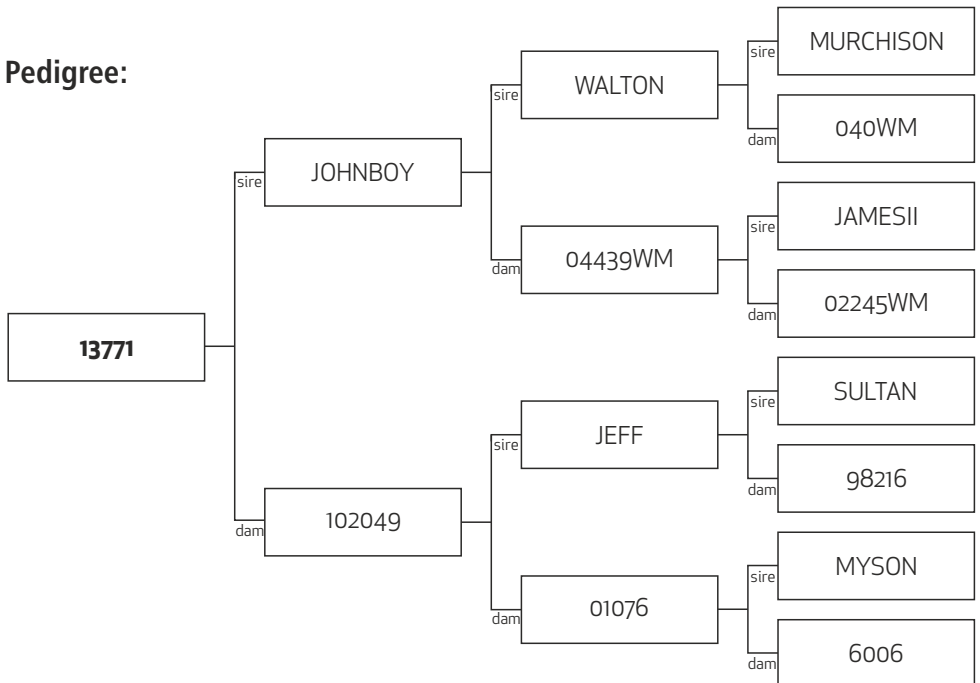


## PEEL FOREST

ESTATE

RED DEER GENETICS

### Pedigree:



**Sale Weight:**

**Price:**

**Buyer:**

**KEY:** W12eBV - Weight at 12 months of age, MVWeBV - Mature velvet weight, MWTeBV - Mature hind weight, WWTeBV - Weaning weight, WWTMeBV - Weaning weight maternal (milking ability), EMACeBV - Eye muscle area

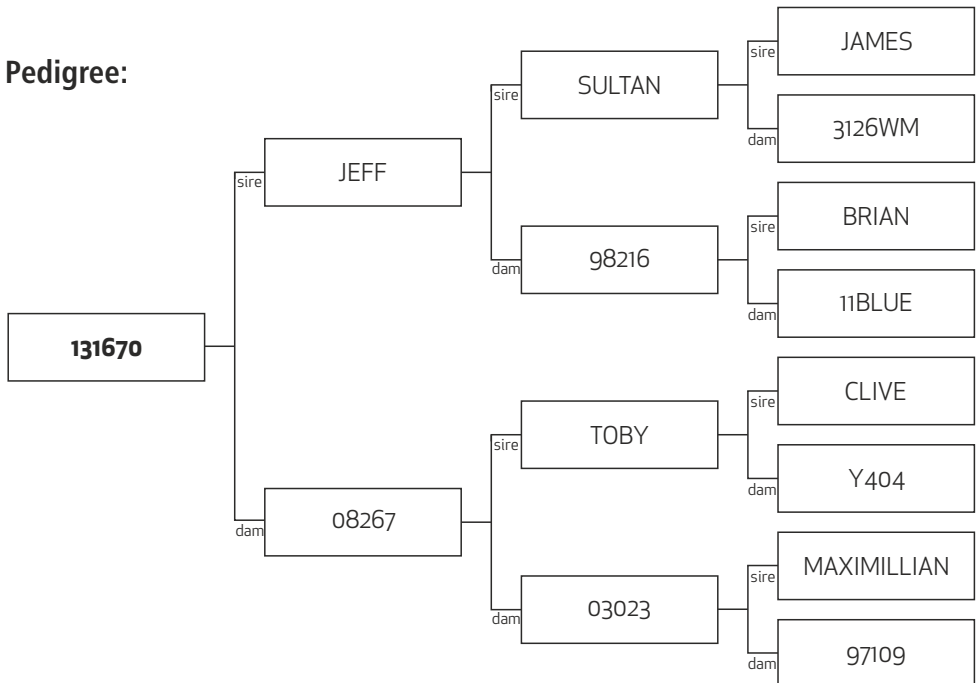
# Lot # 5 - 131670

**BREED Type** 6/8 ENGLISH, 2/8 GERMAN  
**W12BV** 20.01  
**MVWTBV** 1  
**MWTBV** 16.26  
**WWTBV** 11.44  
**WWTMBV** -0.08  
**EMAceBV** 0.27  
**Yearling Weight** 144.5 Kg (25/11/14)  
**3yr Velvet** 5.4 Kg A2M  
**2yr Velvet** 3.2 Kg B2M  
**Comment** GRANDDAM IS ATLAS FULL SISTER



**PEEL FOREST**  
ESTATE  
RED DEER GENETICS

## Pedigree:



**Sale Weight:**

**Price:**

**Buyer:**

**KEY:** W12eBV - Weight at 12 months of age, MVWeBV - Mature velvet weight, MWTeBV - Mature hind weight, WWTeBV - Weaning weight, WWTMeBV - Weaning weight maternal (milking ability), EMACeBV - Eye muscle area

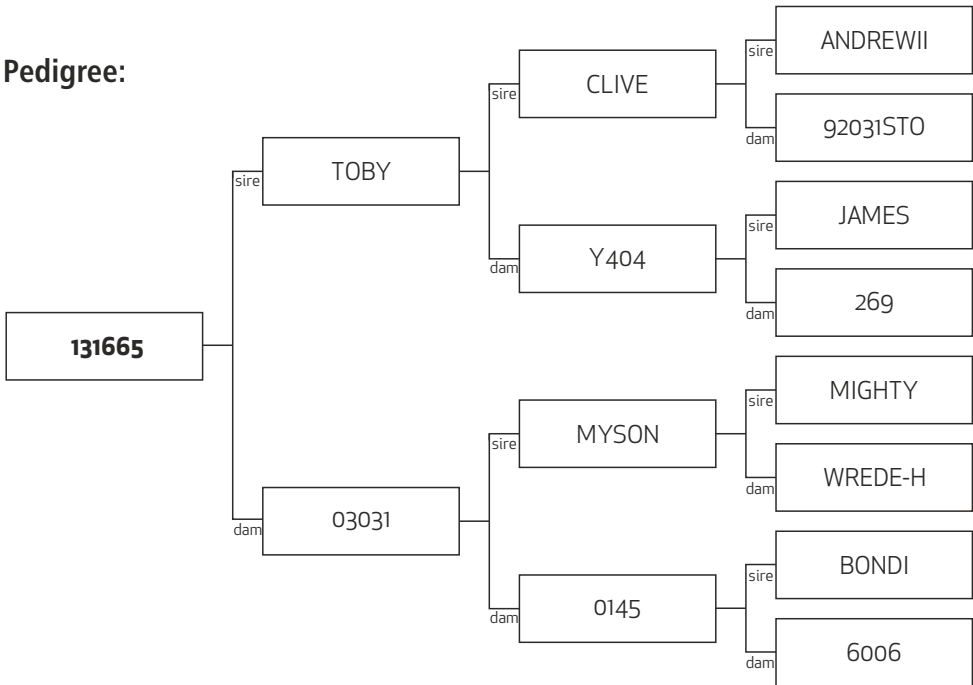
# Lot # 6 - 131665

BREED Type	6/8 ENGLISH/ 2/8 GERMAN
W12BV	16.8
MVWTBV	0.07
MWTBV	12.58
WWTBV	9.35
WWTMBV	1.17
EMAceBV	-0.01
Yearling Weight	131.5 Kg (25/11/14)
3yr Velvet	3.2 Kg A2S
2yr Velvet	2.2 Kg B2S
Comment	



PEEL FOREST  
ESTATE  
RED DEER GENETICS

Pedigree:



Sale Weight:

Price:

Buyer:

KEY: W12eBV - Weight at 12 months of age, MVWeBV - Mature velvet weight, MWTeBV - Mature hind weight, WWTeBV - Weaning weight, WWTMeBV - Weaning weight maternal (milking ability), EMABV - Eye muscle area



# Lot # 7 - 131335

**BREED Type** 5/8 ENGLISH, 3/8 EURO

**W12BV** 10.69

**MVWTBV** 1.46

**MWTBV** 10.42

**WWTBV** 6.35

**WWTMBV** -0.29

**EMAceBV** 0.1

**Yearling Weight** 105.5 Kg (25/11/14)

**3yr Velvet** 6.6 Kg SA2

**2yr Velvet** 3.8 Kg SA2

**Comment**

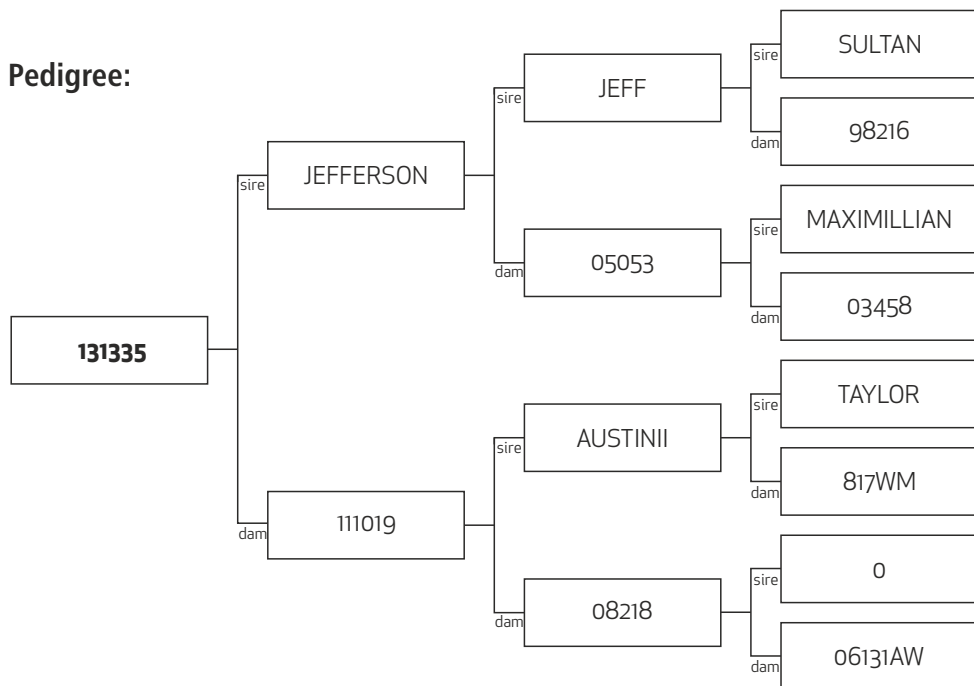


## PEEL FOREST

ESTATE

RED DEER GENETICS

### Pedigree:



**Sale Weight:**

**Price:**

**Buyer:**

**KEY:** W12eBV - Weight at 12 months of age, MVWeBV - Mature velvet weight, MWTeBV - Mature hind weight, WWTeBV - Weaning weight, WWTMeBV - Weaning weight maternal (milking ability), EMACeBV - Eye muscle area

# Lot # 8 - 131672

**BREED Type** 6/8 ENGLISH/ 2/8 GERMAN

**W12BV** 16.87

**MVWTBV** 1.27

**MWTBV** 12.4

**WWTBV** 11.1

**WWTMBV** 0.64

**EMAceBV** 0.21

**Yearling Weight** 131 Kg (25/11/14)

**3yr Velvet** 4.6 Kg SA2

**2yr Velvet** 3.6 Kg A2S

**Comment**

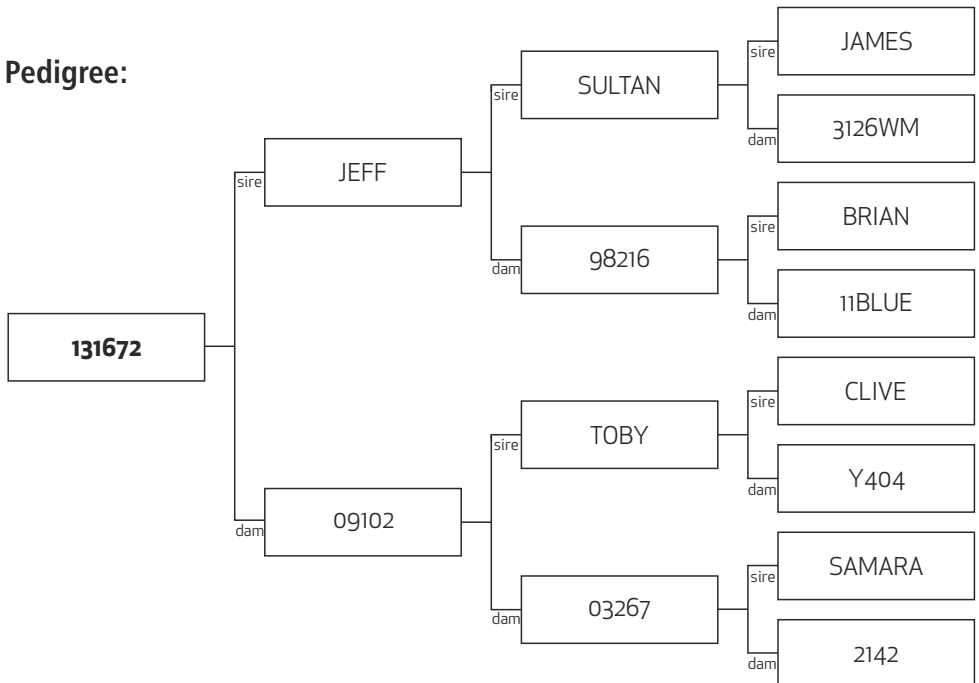


## PEEL FOREST

ESTATE

RED DEER GENETICS

### Pedigree:



**Sale Weight:**

**Price:**

**Buyer:**

**KEY:** W12eBV - Weight at 12 months of age, MVWeBV - Mature velvet weight, MWTeBV - Mature hind weight, WWTeBV - Weaning weight, WWTMeBV - Weaning weight maternal (milking ability), EMACeBV - Eye muscle area

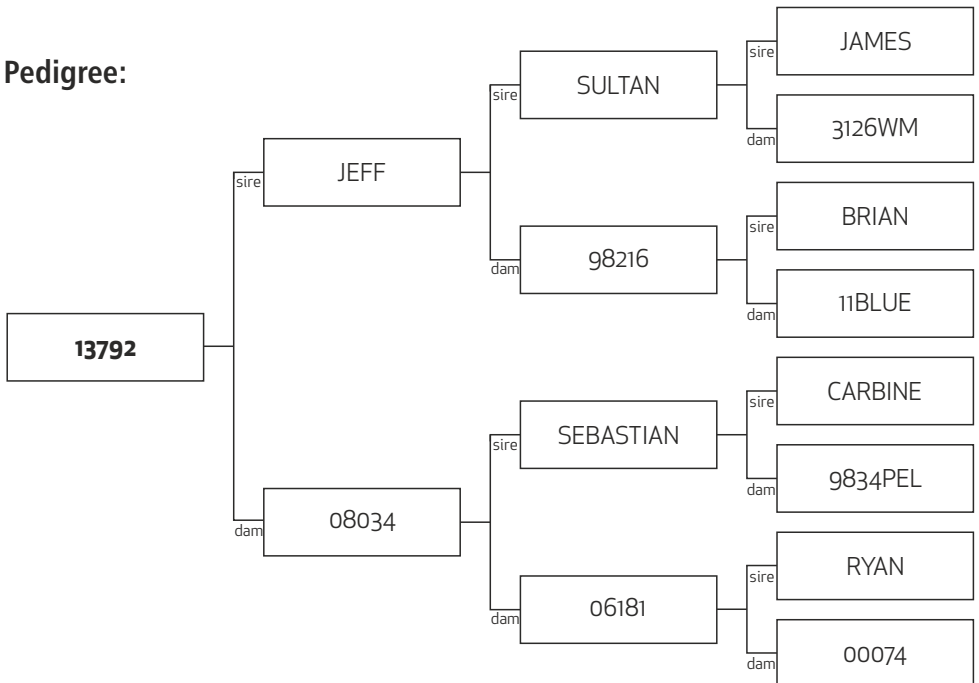
# Lot # 9 - 13792

<b>BREED Type</b>	PURE ENGLISH
<b>W12BV</b>	14.14
<b>MVWTBV</b>	0.18
<b>MWTBV</b>	10.27
<b>WWTBV</b>	7.65
<b>WWTMBV</b>	0.54
<b>EMAceBV</b>	0.34
<b>Yearling Weight</b>	132 Kg (25/11/14)
<b>3yr Velvet</b>	5.5 Kg A2S SA2
<b>2yr Velvet</b>	2.2 Kg B2S
<b>Comment</b>	



**PEEL FOREST**  
ESTATE  
RED DEER GENETICS

## Pedigree:



**Sale Weight:**

**Price:**

**Buyer:**

**KEY:** W12eBV - Weight at 12 months of age, MVWeBV - Mature velvet weight, MWTeBV - Mature hind weight, WWTeBV - Weaning weight, WWTMeBV - Weaning weight maternal (milking ability), EMACeBV - Eye muscle area

# Lot # 10 - 131673

**BREED Type** 6/8 ENGLISH, 2/8 EURO

**W12BV** 15.41

**MVWTBV** 1.32

**MWTBV** 12.52

**WWTBV** 10.55

**WWTMBV** 0.71

**EMAceBV** 0.24

**Yearling Weight** 126 Kg (25/11/14)

**3yr Velvet** 5.4 Kg SA2

**2yr Velvet** 3.6 Kg SA2

**Comment**

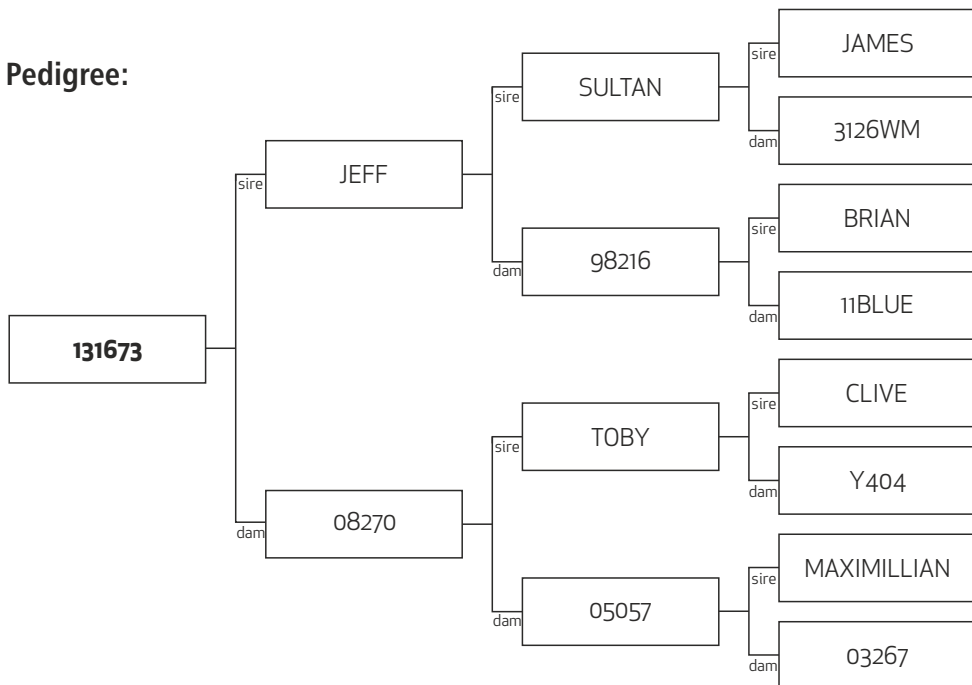


## PEEL FOREST

ESTATE

RED DEER GENETICS

### Pedigree:



**Sale Weight:**

**Price:**

**Buyer:**

**KEY:** W12eBV - Weight at 12 months of age, MVWeBV - Mature velvet weight, MWTeBV - Mature hind weight, WWTeBV - Weaning weight, WWTMeBV - Weaning weight maternal (milking ability), EMACeBV - Eye muscle area

# Lot # 11 - 13961

**BREED Type** 5/8 ENGLISH, 3/8 EURO

**W12BV** 8.99

**MVWTBV** 1.18

**MWTBV** 6.85

**WWTBV** 2.82

**WWTMBV** -0.02

**EMAceBV** 0.8

**Yearling Weight** 102.5 Kg (25/11/14)

**3yr Velvet** 7.2 Kg SA2

**2yr Velvet** 3.2 Kg A2S

**Comment**

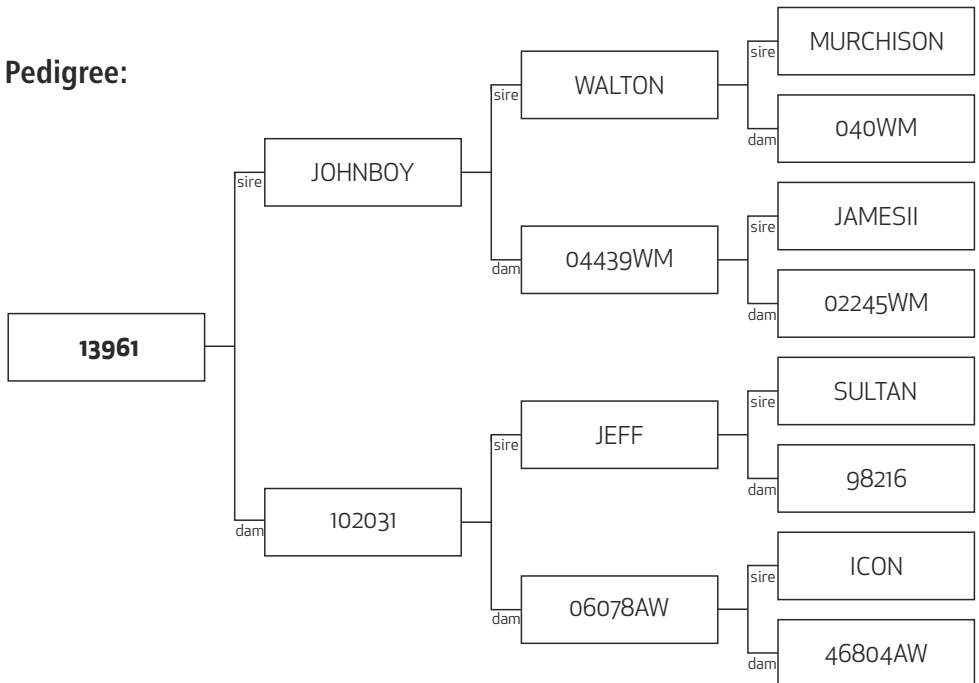


## PEEL FOREST

ESTATE

RED DEER GENETICS

### Pedigree:



**Sale Weight:**

**Price:**

**Buyer:**

**KEY:** W12eBV - Weight at 12 months of age, MVWeBV - Mature velvet weight, MWTeBV - Mature hind weight, WWTeBV - Weaning weight, WWTMeBV - Weaning weight maternal (milking ability), EMACeBV - Eye muscle area

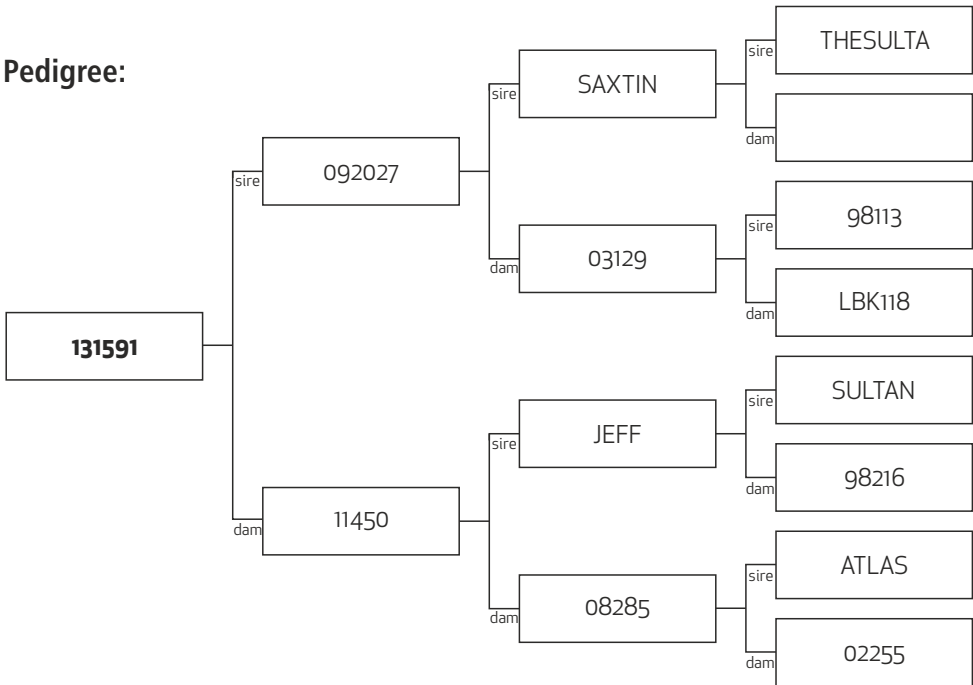
# Lot # 12 - 131591

<b>BREED Type</b>	1/2 ENGLISH, 1/2 GERMAN
<b>W12BV</b>	17.62
<b>MVWTBV</b>	0.02
<b>MWTBV</b>	12.93
<b>WWTBV</b>	7.51
<b>WWTMBV</b>	-1.46
<b>EMAceBV</b>	0.66
<b>Yearling Weight</b>	112 Kg (25/11/14)
<b>3yr Velvet</b>	
<b>2yr Velvet</b>	2.4 Kg B2S
<b>Comment</b>	



**PEEL FOREST**  
ESTATE  
RED DEER GENETICS

**Pedigree:**



**Sale Weight:**

**Price:**

**Buyer:**

**KEY:** W12eBV - Weight at 12 months of age, MVWeBV - Mature velvet weight, MWTeBV - Mature hind weight, WWTeBV - Weaning weight, WWTMeBV - Weaning weight maternal (milking ability), EMACeBV - Eye muscle area

# Lot # 13 - 13343

**BREED Type** PURE ENGLISH

**W12BV** 12

**MVWTBV** 1.71

**MWTBV** 9.65

**WWTBV** 6.22

**WWTMBV** 0.3

**EMAceBV** 0.23

**Yearling Weight** 120.5 Kg (25/11/14)

**3yr Velvet**

**2yr Velvet** 4 Kg Sa2

**Comment**

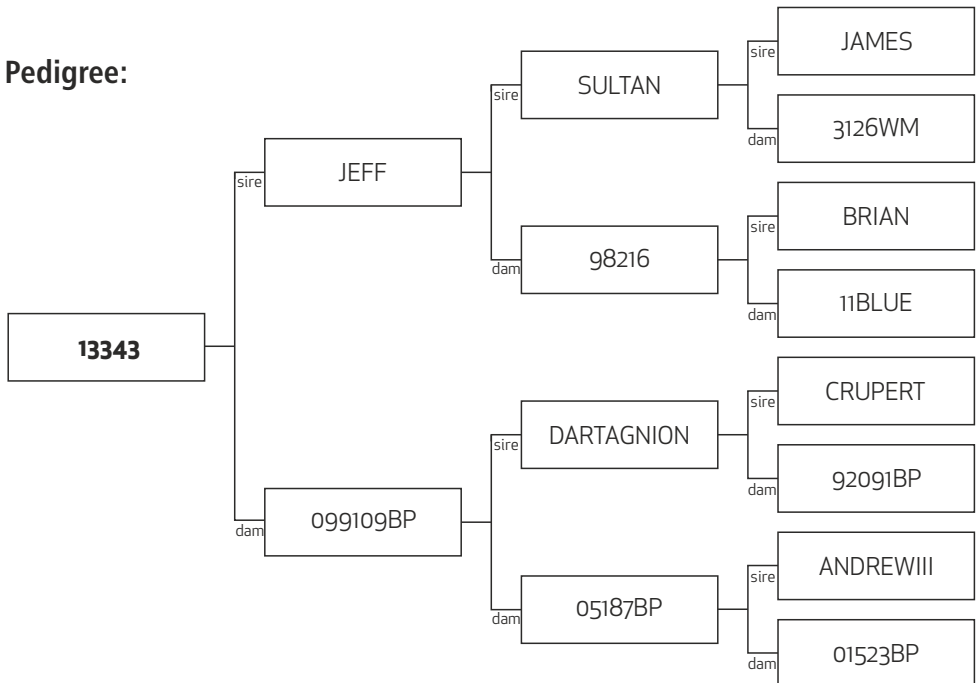


## PEEL FOREST

ESTATE

RED DEER GENETICS

### Pedigree:



**Sale Weight:**

**Price:**

**Buyer:**

**KEY:** W12eBV - Weight at 12 months of age, MVWeBV - Mature velvet weight, MWTeBV - Mature hind weight, WWTeBV - Weaning weight, WWTMeBV - Weaning weight maternal (milking ability), EMACeBV - Eye muscle area



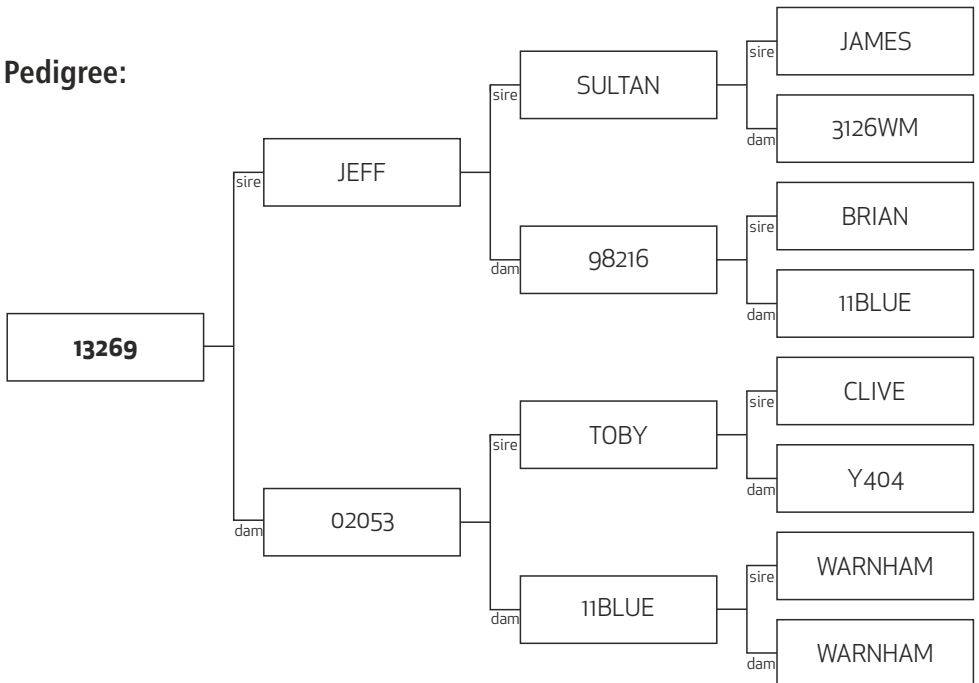
# Lot # 14 - 13269

**BREED Type** PURE ENGLISH  
**W12BV** 13.99  
**MVWTBV** 0.65  
**MWTBV** 12.13  
**WWTBV** 6.89  
**WWTMBV** -0.06  
**EMAceBV** 0.06  
**Yearling Weight** 92.5 Kg (25/11/14)  
**3yr Velvet**  
**2yr Velvet** 2.6 Kg C2S  
**Comment**



**PEEL FOREST**  
ESTATE  
RED DEER GENETICS

## Pedigree:



**Sale Weight:**

**Price:**

**Buyer:**

**KEY:** W12eBV - Weight at 12 months of age, MVWeBV - Mature velvet weight, MWTeBV - Mature hind weight, WWTeBV - Weaning weight, WWTMeBV - Weaning weight maternal (milking ability), EMACeBV - Eye muscle area

# Lot # 15 - 13627

**BREED Type** PURE ENGLISH

**W12BV** 12.87

**MVWTBV** 1.02

**MWTBV** 8.84

**WWTBV** 6.98

**WWTMBV** 0.39

**EMAceBV** 0.52

**Yearling Weight** 119.5 Kg (25/11/14)

**3yr Velvet**

**2yr Velvet** 3 Kg B2S

**Comment**

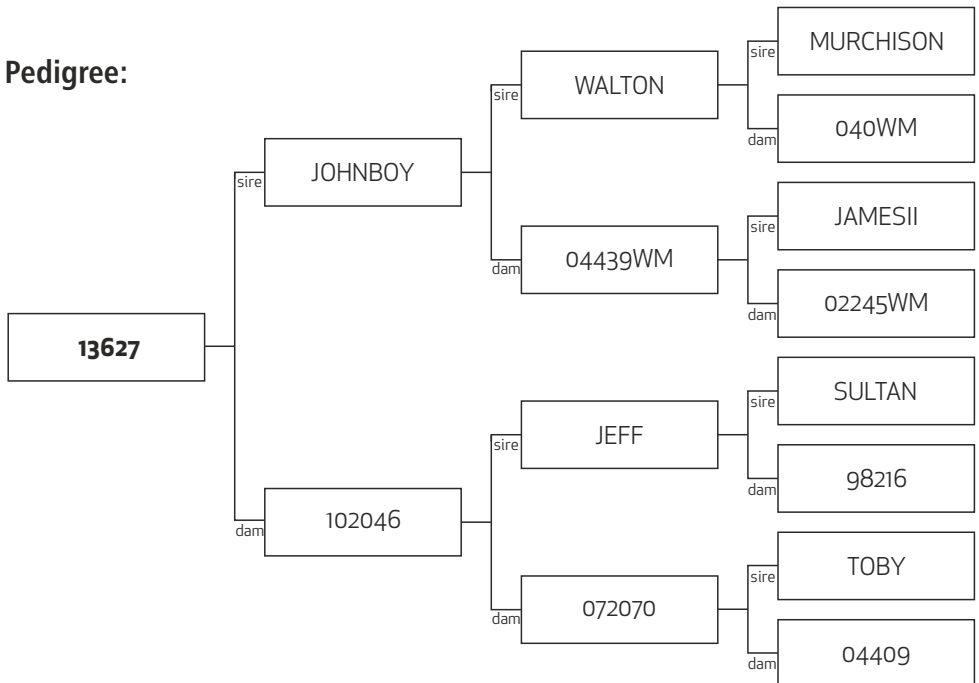


## PEEL FOREST

ESTATE

RED DEER GENETICS

### Pedigree:



**Sale Weight:**

**Price:**

**Buyer:**

**KEY:** W12eBV - Weight at 12 months of age, MVWeBV - Mature velvet weight, MWTeBV - Mature hind weight, WWTeBV - Weaning weight, WWTMeBV - Weaning weight maternal (milking ability), EMACeBV - Eye muscle area

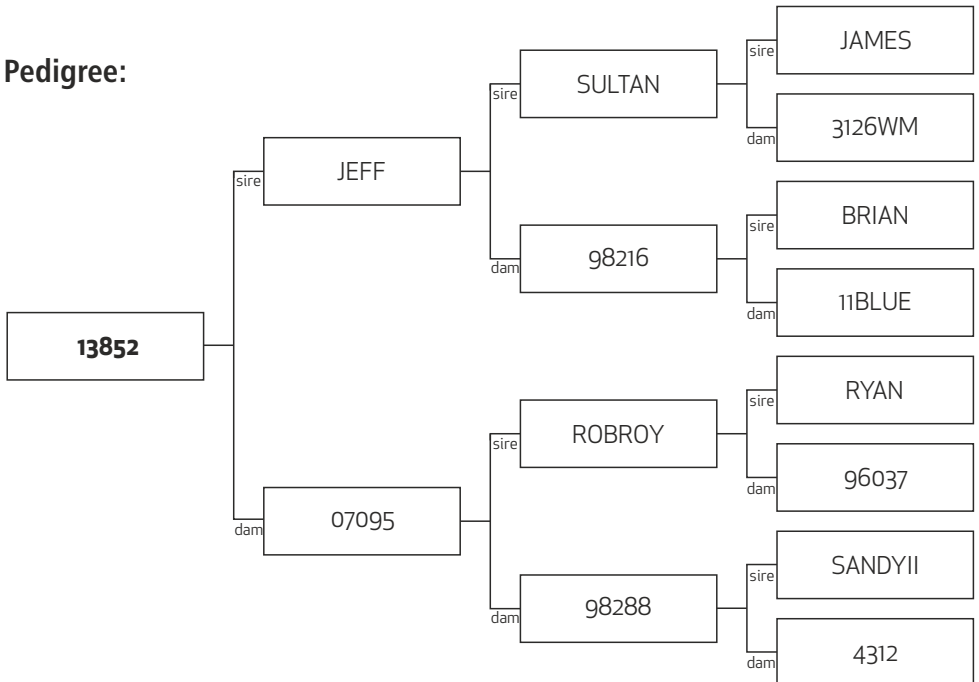
# Lot # 16 - 13852

**BREED Type** PURE ENGLISH  
**W12BV** 11.4  
**MVWTBV** 0.39  
**MWTBV** 9.44  
**WWTBV** 4.69  
**WWTMBV** -0.84  
**EMAceBV** 0.48  
**Yearling Weight** 123 Kg (25/11/14)  
**3yr Velvet**  
**2yr Velvet** 2.8 Kg B2S  
**Comment**



**PEEL FOREST**  
ESTATE  
RED DEER GENETICS

## Pedigree:



**Sale Weight:**

**Price:**

**Buyer:**

**KEY:** W12eBV - Weight at 12 months of age, MVWeBV - Mature velvet weight, MWTeBV - Mature hind weight, WWTeBV - Weaning weight, WWTMeBV - Weaning weight maternal (milking ability), EMACeBV - Eye muscle area

# Lot # 17 - 13212

**BREED Type** PURE ENGLISH

**W12BV** 11.98

**MVWTBV** 0.45

**MWTBV** 10.69

**WWTBV** 6.72

**WWTMBV** 0.12

**EMAcBV** -0.13

**Yearling Weight** 105.5 Kg (25/11/14)

**3yr Velvet** 4 Kg A2S

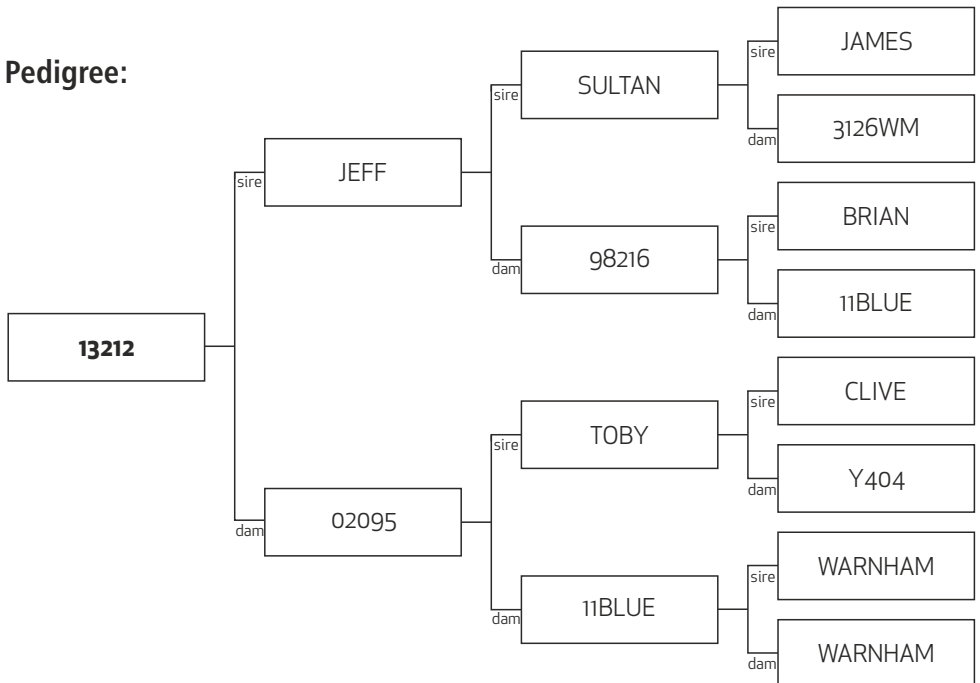
**2yr Velvet** 2.2 Kg C2S

**Comment**



**PEEL FOREST**  
ESTATE  
RED DEER GENETICS

## Pedigree:



**Sale Weight:**

**Price:**

**Buyer:**

**KEY:** W12eBV - Weight at 12 months of age, MVWeBV - Mature velvet weight, MWTeBV - Mature hind weight, WWTeBV - Weaning weight, WWTMeBV - Weaning weight maternal (milking ability), EMAcBV - Eye muscle area

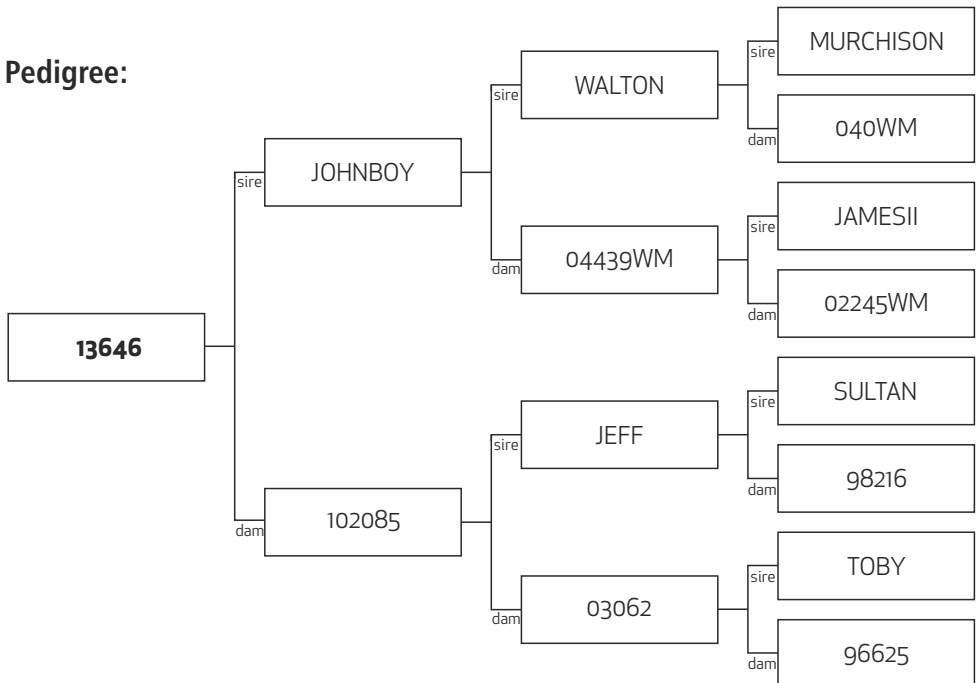
# Lot # 18 - 13646

**BREED Type** PURE ENGLISH  
**W12BV** 11.76  
**MVWTBV** 1.39  
**MWTBV** 7.68  
**WWTBV** 6.98  
**WWTMBV** 1.15  
**EMAceBV** 0.49  
**Yearling Weight** 121 Kg (25/11/14)  
**3yr Velvet**  
**2yr Velvet** 3.6 Kg A2S  
**Comment**



**PEEL FOREST**  
ESTATE  
RED DEER GENETICS

## Pedigree:



**Sale Weight:**

**Price:**

**Buyer:**

**KEY:** W12eBV - Weight at 12 months of age, MVWeBV - Mature velvet weight, MWTeBV - Mature hind weight, WWTeBV - Weaning weight, WWTMeBV - Weaning weight maternal (milking ability), EMACeBV - Eye muscle area

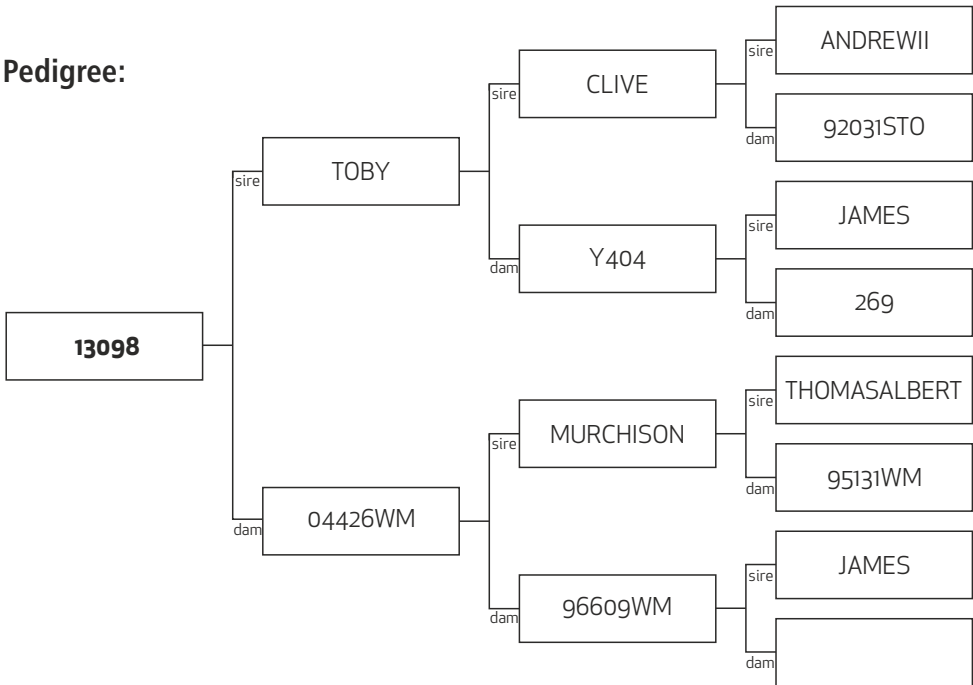
# Lot # 19 - 13098

<b>BREED Type</b>	PURE ENGLISH
<b>W12BV</b>	10.3
<b>MVWTBV</b>	0.31
<b>MWTBV</b>	6.44
<b>WWTBV</b>	6.64
<b>WWTMBV</b>	-0.43
<b>EMAceBV</b>	-0.31
<b>Yearling Weight</b>	124 Kg (25/11/14)
<b>3yr Velvet</b>	4.4 Kg A2S
<b>2yr Velvet</b>	2.8 Kg B2S
<b>Comment</b>	



**PEEL FOREST**  
ESTATE  
RED DEER GENETICS

**Pedigree:**



**Sale Weight:**

**Price:**

**Buyer:**

**KEY:** W12eBV - Weight at 12 months of age, MVWeBV - Mature velvet weight, MWTeBV - Mature hind weight, WWTeBV - Weaning weight, WWTMeBV - Weaning weight maternal (milking ability), EMACeBV - Eye muscle area

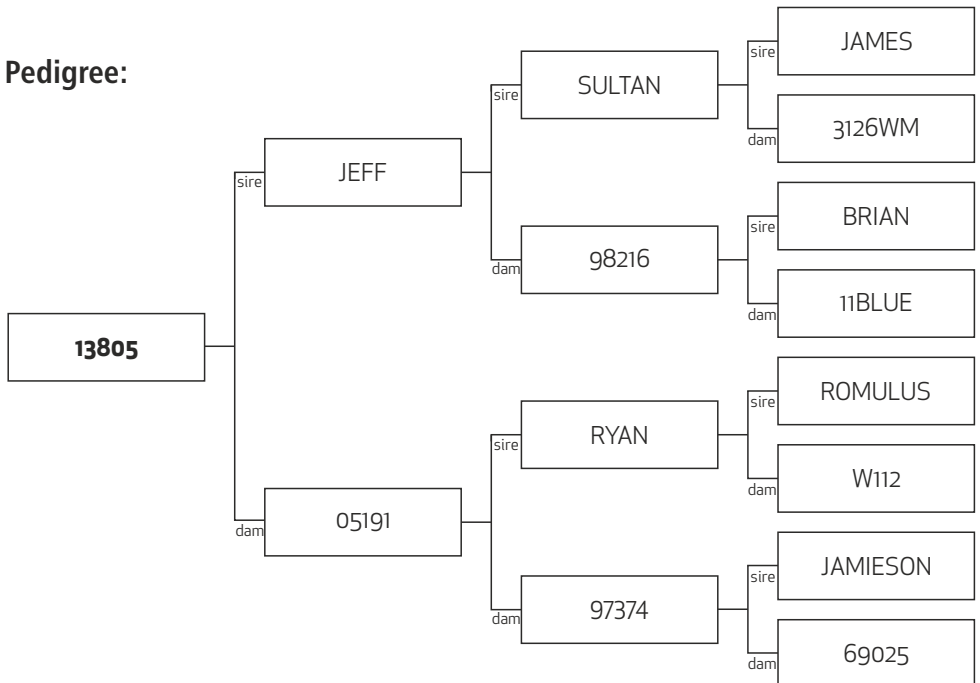
# Lot # 20 - 13805

**BREED Type** PURE ENGLISH  
**W12BV** 9.71  
**MVWTBV** 0.23  
**MWTBV** 8.95  
**WWTBV** 2.72  
**WWTMBV** -0.55  
**EMAceBV** 0.18  
**Yearling Weight** 114 Kg (25/11/14)  
**3yr Velvet** 4.2 Kg SA2  
**2yr Velvet** 2.6 Kg A2S  
**Comment**



**PEEL FOREST**  
ESTATE  
RED DEER GENETICS

## Pedigree:



**Sale Weight:**

**Price:**

**Buyer:**

**KEY:** W12eBV - Weight at 12 months of age, MVWeBV - Mature velvet weight, MWTeBV - Mature hind weight, WWTeBV - Weaning weight, WWTMeBV - Weaning weight maternal (milking ability), EMACeBV - Eye muscle area



# Lot # 21 - 131444

**BREED Type** 3/4 ENGLISH, 1/4 GERMAN

**W12BV** 14.96

**MVWTBV** 0.89

**MWTBV** 12.04

**WWTBV** 8.09

**WWTMBV** -0.31

**EMAceBV** -0.04

**Yearling Weight** 123 Kg (25/11/14)

**3yr Velvet** 5.7 Kg SA2

**2yr Velvet** 3 Kg A2S SA2

**Comment**

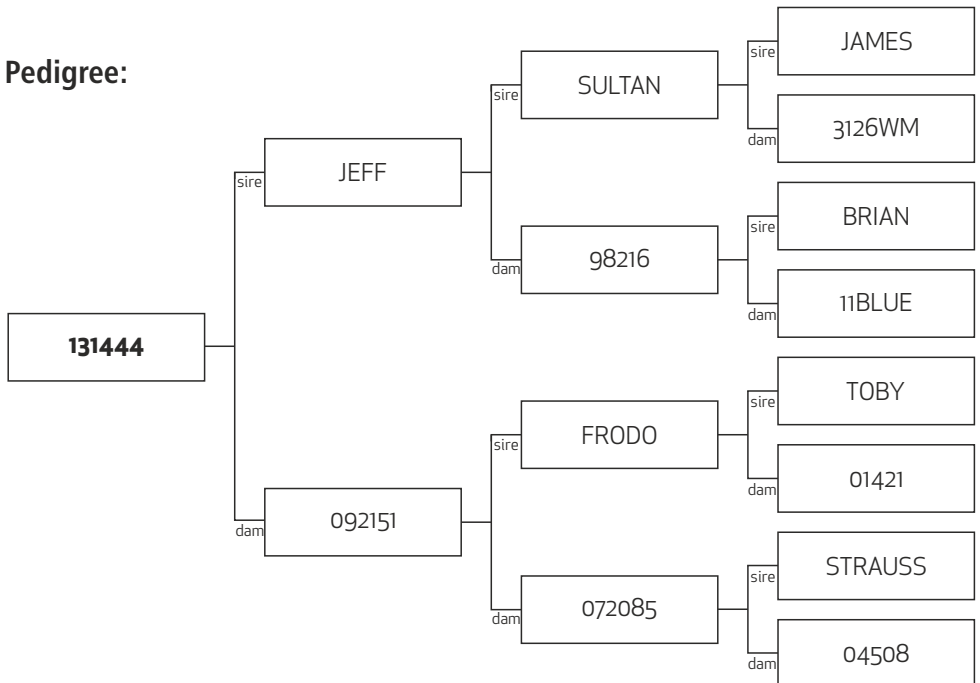


## PEEL FOREST

ESTATE

RED DEER GENETICS

### Pedigree:



**KEY:** W12eBV - Weight at 12 months of age, MVWeBV - Mature velvet weight, MWTeBV - Mature hind weight, WWTeBV - Weaning weight, WWTMeBV - Weaning weight maternal (milking ability), EMABV - Eye muscle area

# Lot # 22 - 131445

**BREED Type** 6/8 ENGLISH, 2/8 GERMAN

**W12BV** 11.73

**MVWTBV** 0.2

**MWTBV** 10.71

**WWTBV** 5.14

**WWTMBV** -0.99

**EMAceBV** -0.28

**Yearling Weight** 111 Kg (25/11/14)

**3yr Velvet**

**2yr Velvet** 2.2 Kg B2S

**Comment**

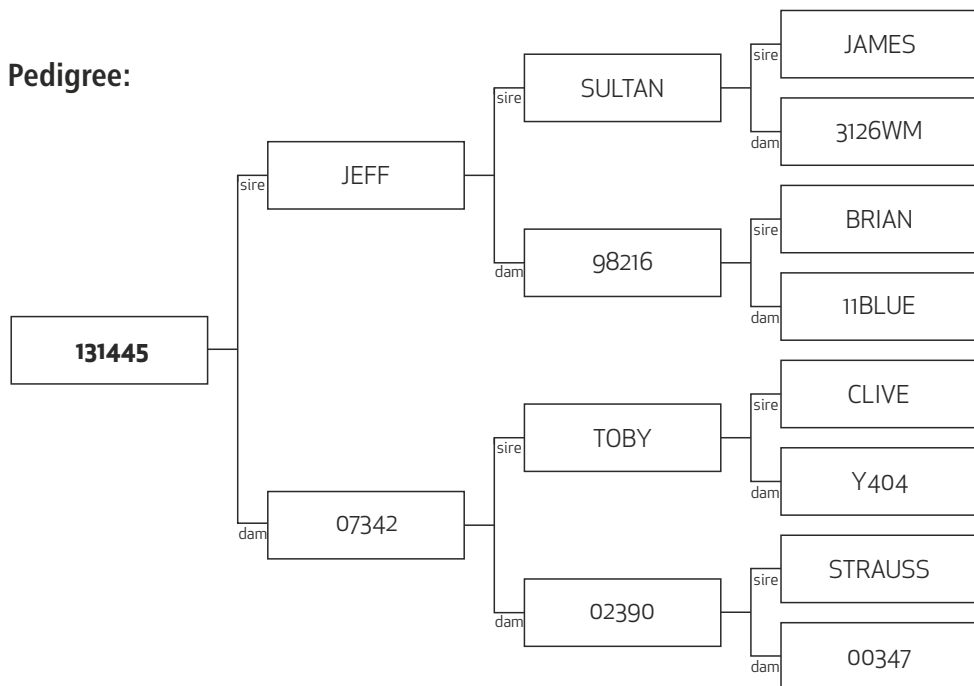


## PEEL FOREST

ESTATE

RED DEER GENETICS

### Pedigree:



**KEY:** W12eBV - Weight at 12 months of age, MVWeBV - Mature velvet weight, MWTeBV - Mature hind weight, WWTeBV - Weaning weight, WWTMeBV - Weaning weight maternal (milking ability), EMABV - Eye muscle area

# Lot # 23 - 13348

**BREED Type** 5/8 ENGLISH, 3/8 EURO

**W12BV** 14.86

**MVWTBV** -0.03

**MWTBV** 10.45

**WWTBV** 10.93

**WWTMBV** 0.07

**EMAceBV** -0.21

**Yearling Weight** 129 Kg (25/11/14)

**3yr Velvet** 3.9 Kg A2M

**2yr Velvet** 2.2 Kg C2L

**Comment**

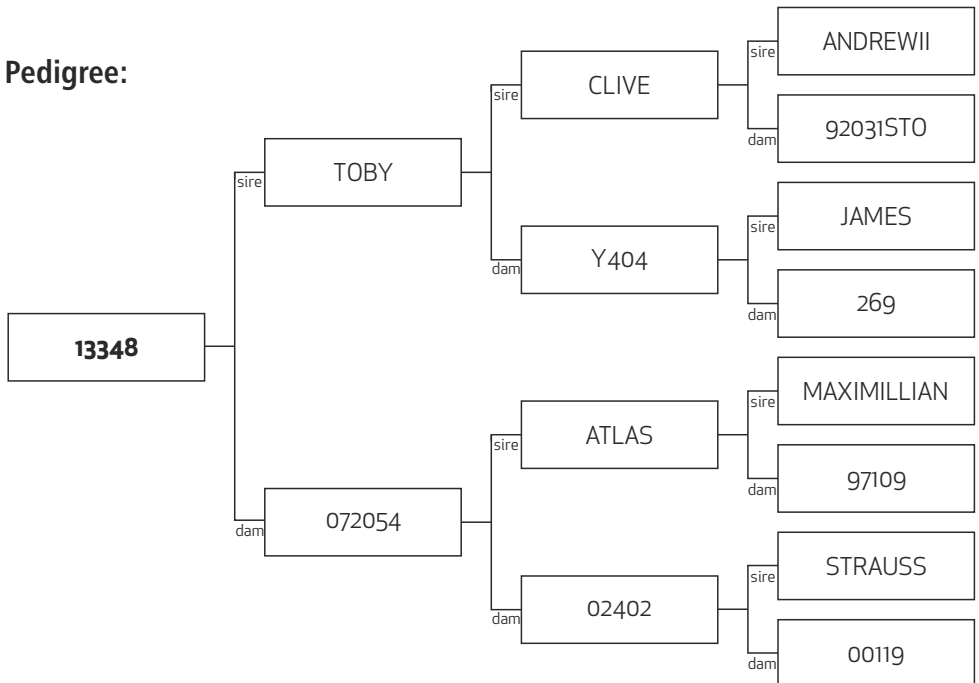


## PEEL FOREST

ESTATE

RED DEER GENETICS

### Pedigree:



**Sale Weight:**

**Price:**

**Buyer:**

**KEY:** W12eBV - Weight at 12 months of age, MVWeBV - Mature velvet weight, MWTeBV - Mature hind weight, WWTeBV - Weaning weight, WWTMeBV - Weaning weight maternal (milking ability), EMACeBV - Eye muscle area

# Lot # 24 - 131252

**BREED Type** 6/8 ENGLISH, 2/8 EURO

**W12BV** 12.78

**MVWTBV** 0.87

**MWTBV** 11.18

**WWTBV** 8.48

**WWTMBV** -0.34

**EMAceBV** -0.25

**Yearling Weight** 103.5 Kg (25/11/14)

**3yr Velvet** 4.5 Kg A2S

**2yr Velvet** 3 Kg C2LT

**Comment**

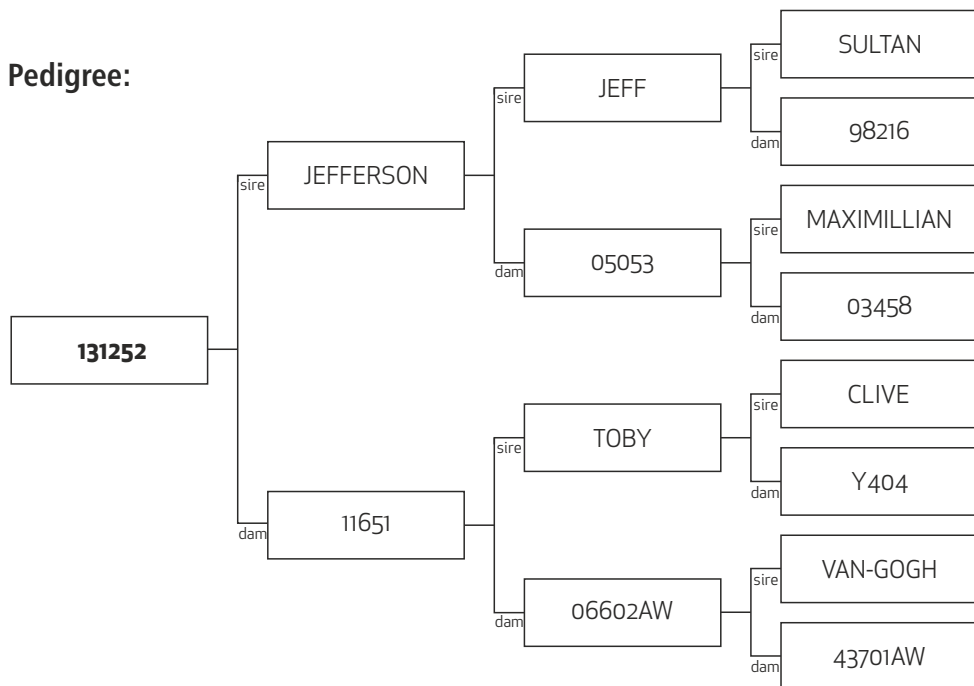


## PEEL FOREST

ESTATE

RED DEER GENETICS

### Pedigree:



**Sale Weight:**

**Price:**

**Buyer:**

**KEY:** W12eBV - Weight at 12 months of age, MVWeBV - Mature velvet weight, MWTeBV - Mature hind weight, WWTeBV - Weaning weight, WWTMeBV - Weaning weight maternal (milking ability), EMACeBV - Eye muscle area

# Lot # 25 - 131329

**BREED Type** 1/2 ENGLISH, 1/2 GERMAN

**W12BV** 11.8

**MVWTBV** 0.51

**MWTBV** 9.27

**WWTBV** 8.24

**WWTMBV** -0.64

**EMAceBV** 0.24

**Yearling Weight** 106 Kg (25/11/14)

**3yr Velvet**

**2yr Velvet** 2.8 Kg A2S

**Comment**

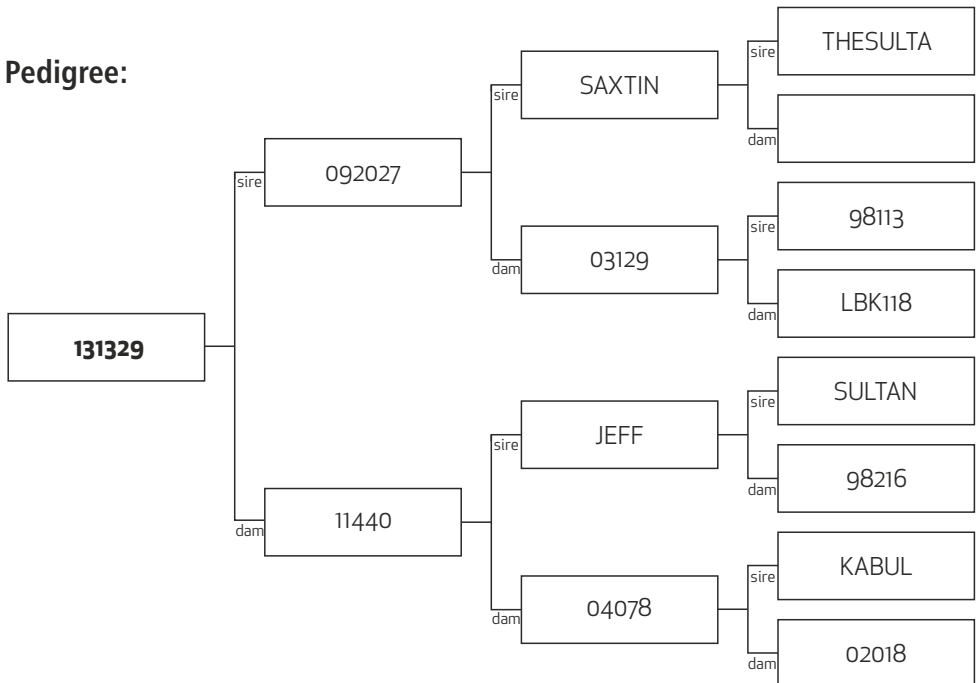


## PEEL FOREST

ESTATE

RED DEER GENETICS

### Pedigree:



**Sale Weight:**

**Price:**

**Buyer:**

**KEY:** W12eBV - Weight at 12 months of age, MVWeBV - Mature velvet weight, MWTeBV - Mature hind weight, WWTeBV - Weaning weight, WWTMeBV - Weaning weight maternal (milking ability), EMACeBV - Eye muscle area

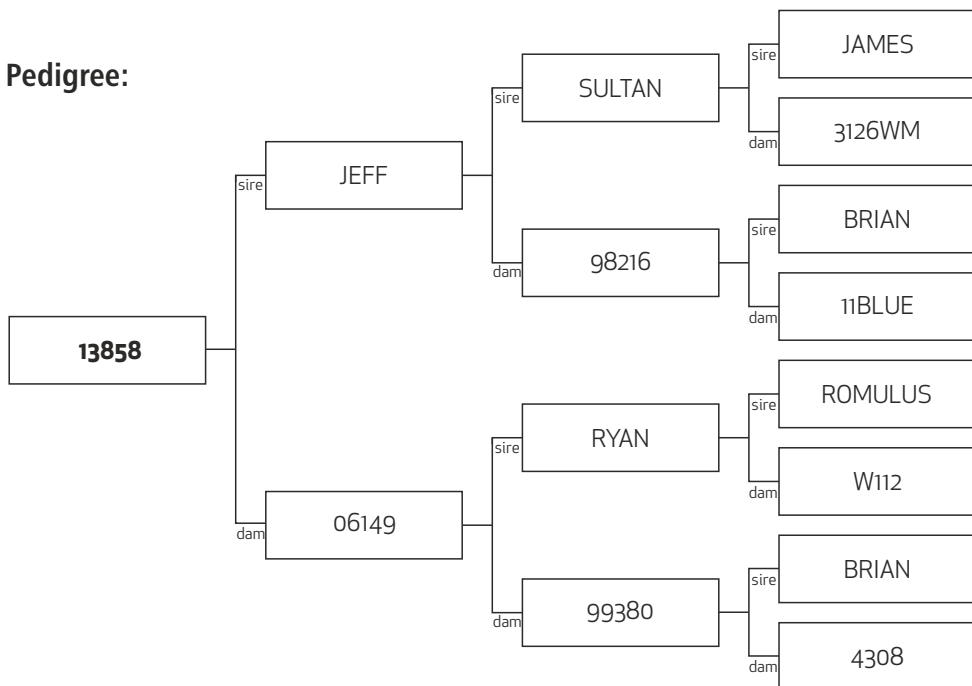
# Lot # 26 - 13858

<b>BREED Type</b>	PURE ENGLISH
<b>W12BV</b>	9.95
<b>MVWTBV</b>	0.42
<b>MWTBV</b>	9.48
<b>WWTBV</b>	3.47
<b>WWTMBV</b>	1.06
<b>EMAceBV</b>	0.24
<b>Yearling Weight</b>	115 Kg (25/11/14)
<b>3yr Velvet</b>	
<b>2yr Velvet</b>	2.6 Kg A2S
<b>Comment</b>	



**PEEL FOREST**  
ESTATE  
RED DEER GENETICS

## Pedigree:



**Sale Weight:**

**Price:**

**Buyer:**

**KEY:** W12eBV - Weight at 12 months of age, MVWeBV - Mature velvet weight, MWTeBV - Mature hind weight, WWTeBV - Weaning weight, WWTMeBV - Weaning weight maternal (milking ability), EMACeBV - Eye muscle area

# Lot # 27 - 131458

**BREED Type** 6/8 ENGLISH, 2/8 EURO

**W12BV** 14.32

**MVWTBV** 2.1

**MWTBV** 12.96

**WWTBV** 7.87

**WWTMBV** 0.14

**EMAceBV** 0.05

**Yearling Weight** 115.5 Kg (25/11/14)

**3yr Velvet** 2.9 Kg SA1 SA2

**2yr Velvet** 4.6 Kg A2OG

**Comment**

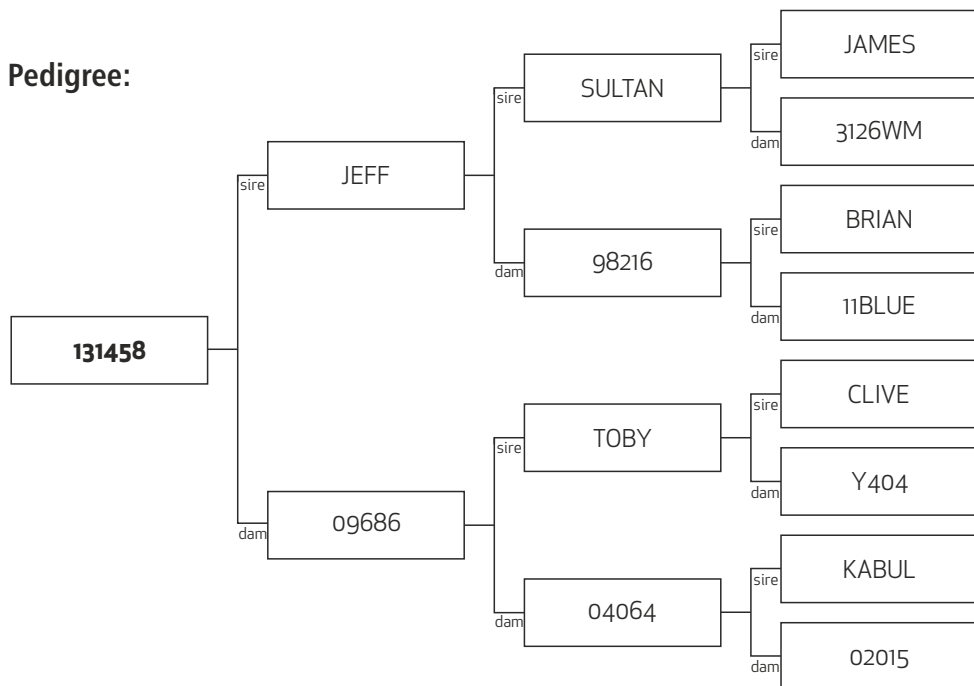


## PEEL FOREST

ESTATE

RED DEER GENETICS

### Pedigree:



**Sale Weight:**

**Price:**

**Buyer:**

**KEY:** W12eBV - Weight at 12 months of age, MVWeBV - Mature velvet weight, MWTeBV - Mature hind weight, WWTeBV - Weaning weight, WWTMeBV - Weaning weight maternal (milking ability), EMACeBV - Eye muscle area

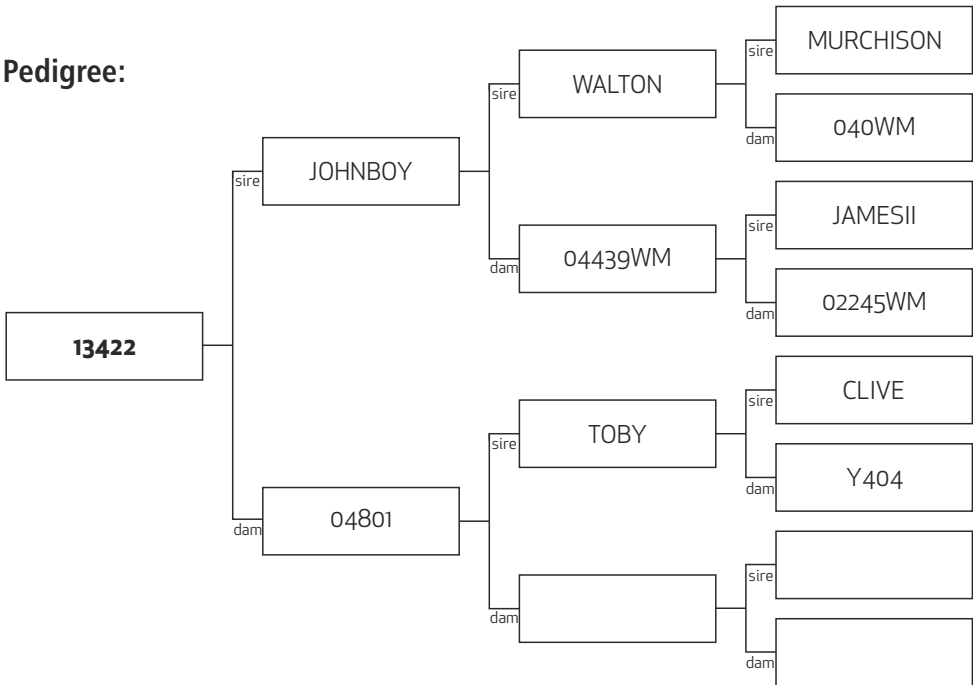
# Lot # 28 - 13422

<b>BREED Type</b>	6/8 ENGLISH, 2/8 GERMAN
<b>W12BV</b>	10.11
<b>MVWTBV</b>	1.49
<b>MWTBV</b>	5.54
<b>WWTBV</b>	6.72
<b>WWTMBV</b>	1.49
<b>EMAceBV</b>	0.28
<b>Yearling Weight</b>	114.5 Kg (25/11/14)
<b>3yr Velvet</b>	
<b>2yr Velvet</b>	3.8 Kg A2S
<b>Comment</b>	



PEEL FOREST  
ESTATE  
RED DEER GENETICS

Pedigree:



Sale Weight:

Price:

Buyer:

KEY: W12eBV - Weight at 12 months of age, MVWeBV - Mature velvet weight, MWTeBV - Mature hind weight, WWTeBV - Weaning weight, WWTMeBV - Weaning weight maternal (milking ability), EMACeBV - Eye muscle area



# Lot # 29 - 131666

**BREED Type** 5/8 ENGLISH, 3/8 EURO

**W12BV** 10.54

**MVWTBV** 0.36

**MWTBV** 9.68

**WWTBV** 5.88

**WWTMBV** -0.68

**EMAceBV** 0.75

**Yearling Weight** 120 Kg (25/11/14)

**3yr Velvet** 3.3 Kg A2S

**2yr Velvet** 2.6 Kg C2M

**Comment**

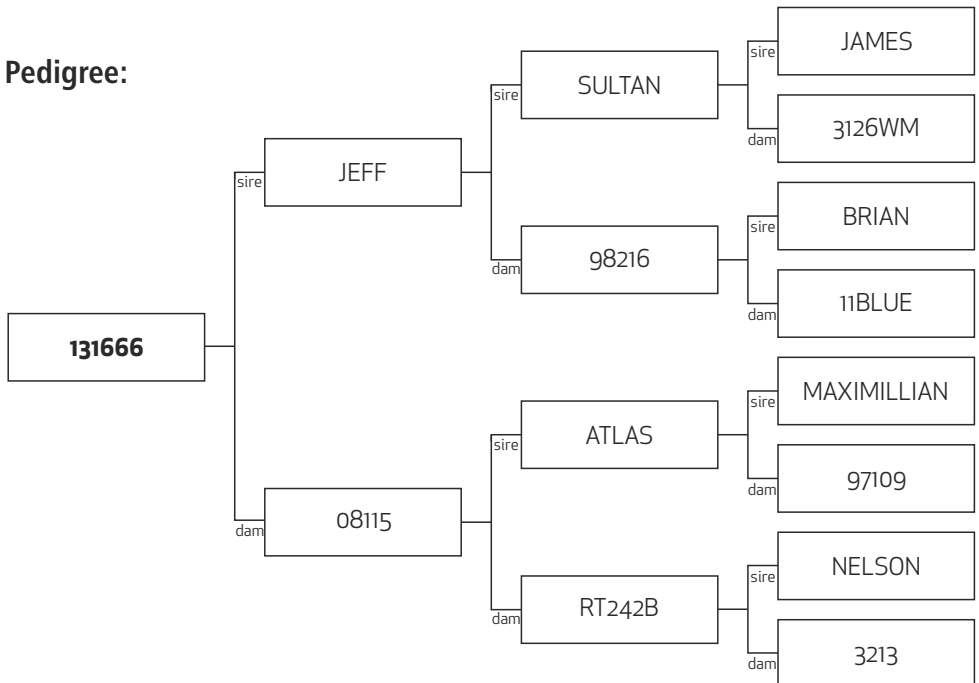


## PEEL FOREST

ESTATE

RED DEER GENETICS

### Pedigree:



**Sale Weight:**

**Price:**

**Buyer:**

**KEY:** W12eBV - Weight at 12 months of age, MVWeBV - Mature velvet weight, MWTeBV - Mature hind weight, WWTeBV - Weaning weight, WWTMeBV - Weaning weight maternal (milking ability), EMACeBV - Eye muscle area

# Lot # 30 - 131660

**BREED Type** 7/8 ENGLISH, 1/8 GERMAN

**W12BV** 9.53

**MVWTBV** 0.69

**MWTBV** 6.52

**WWTBV** 6.98

**WWTMBV** -0.05

**EMAceBV** -0.3

**Yearling Weight** 119.5 Kg (25/11/14)

**3yr Velvet** 4.9 A2S

**2yr Velvet** 3.2 Kg B2M

**Comment**

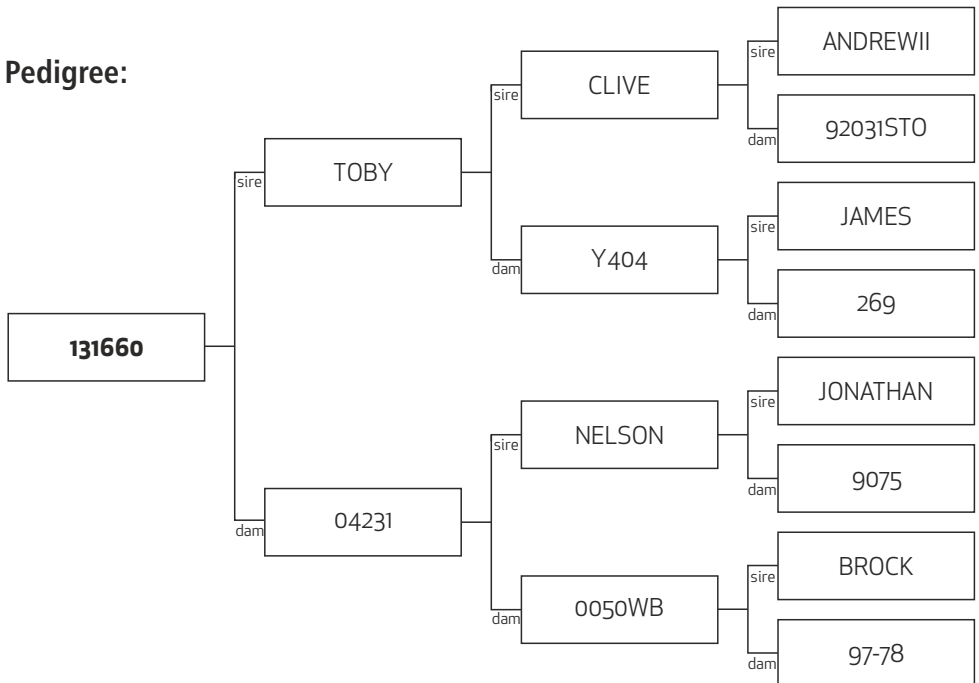


## PEEL FOREST

ESTATE

RED DEER GENETICS

### Pedigree:



**Sale Weight:**

**Price:**

**Buyer:**

**KEY:** W12eBV - Weight at 12 months of age, MVWeBV - Mature velvet weight, MWTeBV - Mature hind weight, WWTeBV - Weaning weight, WWTMeBV - Weaning weight maternal (milking ability), EMACeBV - Eye muscle area

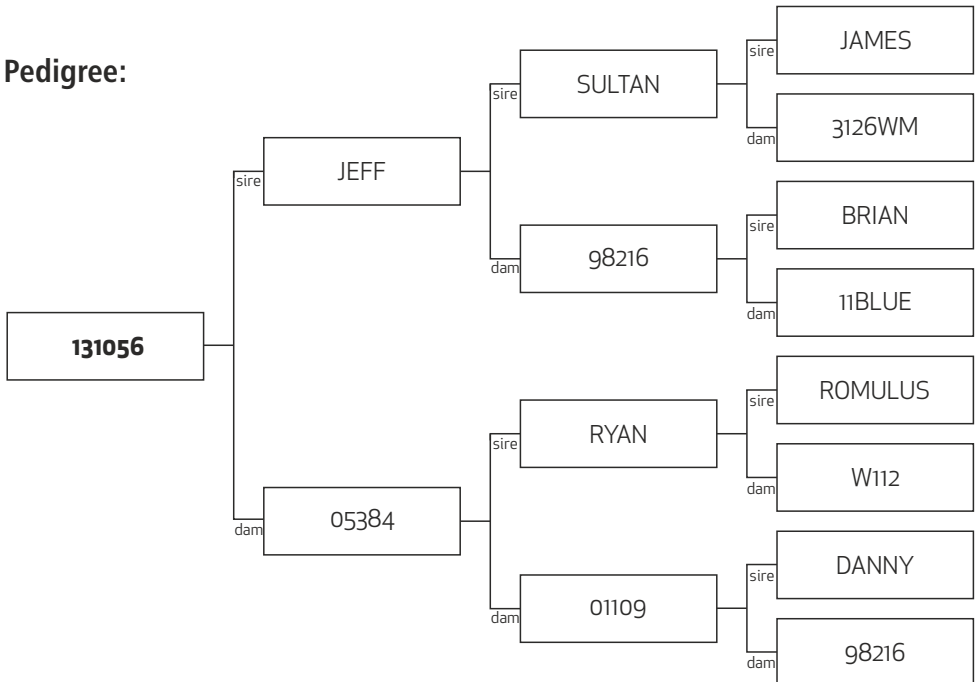
# Lot # 31 - 131056

**BREED Type** PURE ENGLISH  
**W12BV** 8.19  
**MVWTBV** -0.53  
**MWTBV** 8.52  
**WWTBV** 2.96  
**WWTMBV** -0.12  
**EMAceBV** 0.08  
**Yearling Weight** 100 Kg (25/11/14)  
**3yr Velvet** 4.3 Kg SA2  
**2yr Velvet**  
**Comment**



**PEEL FOREST**  
ESTATE  
RED DEER GENETICS

## Pedigree:



**Sale Weight:**

**Price:**

**Buyer:**

**KEY:** W12eBV - Weight at 12 months of age, MVWeBV - Mature velvet weight, MWTeBV - Mature hind weight, WWTeBV - Weaning weight, WWTMeBV - Weaning weight maternal (milking ability), EMACeBV - Eye muscle area

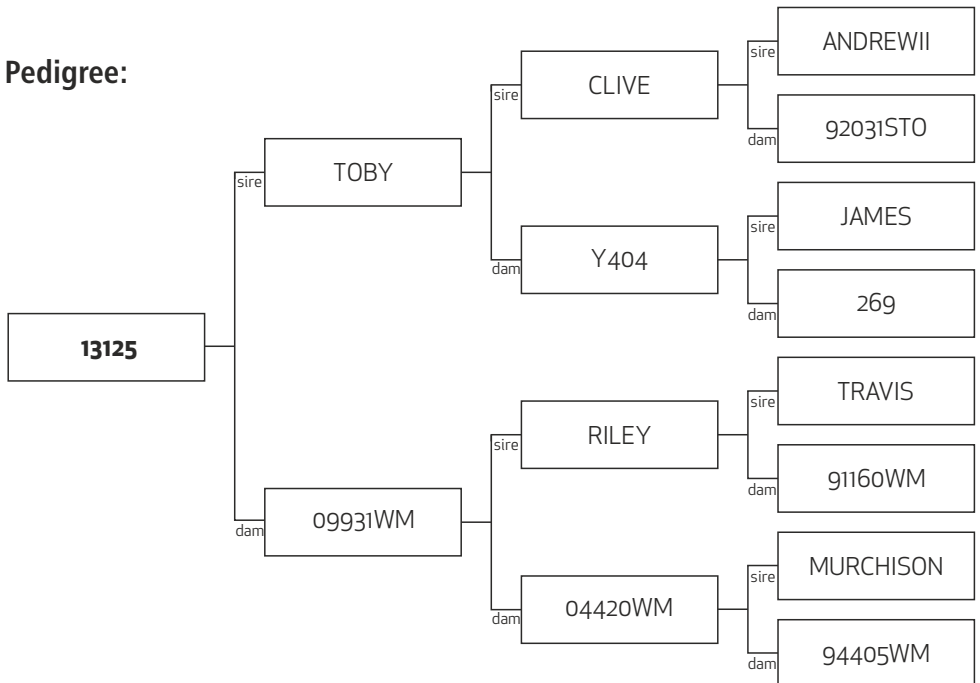
# Lot # 32 - 13125

**BREED Type** PURE ENGLISH  
**W12BV** 7.89  
**MVWTBV** 1  
**MWTBV** 5.69  
**WWTBV** 5.65  
**WWTMBV** -0.23  
**EMAceBV** -0.26  
**Yearling Weight** 118 Kg (25/11/14)  
**3yr Velvet** 4.8 Kg A2S  
**2yr Velvet** HA HH  
**Comment**



**PEEL FOREST**  
ESTATE  
RED DEER GENETICS

## Pedigree:



**Sale Weight:**

**Price:**

**Buyer:**

**KEY:** W12eBV - Weight at 12 months of age, MVWeBV - Mature velvet weight, MWTeBV - Mature hind weight, WWTeBV - Weaning weight, WWTMeBV - Weaning weight maternal (milking ability), EMACeBV - Eye muscle area

# Lot # 33 - 131452

**BREED Type** PURE ENGLISH

**W12BV** 11.82

**MVWTBV** -0.29

**MWTBV** 10.67

**WWTBV** 6.04

**WWTMBV** -0.18

**EMAceBV** -0.44

**Yearling Weight** 108.5 Kg (25/11/14)

**3yr Velvet**

**2yr Velvet** 1.6 Kg D1S C2S

**Comment**

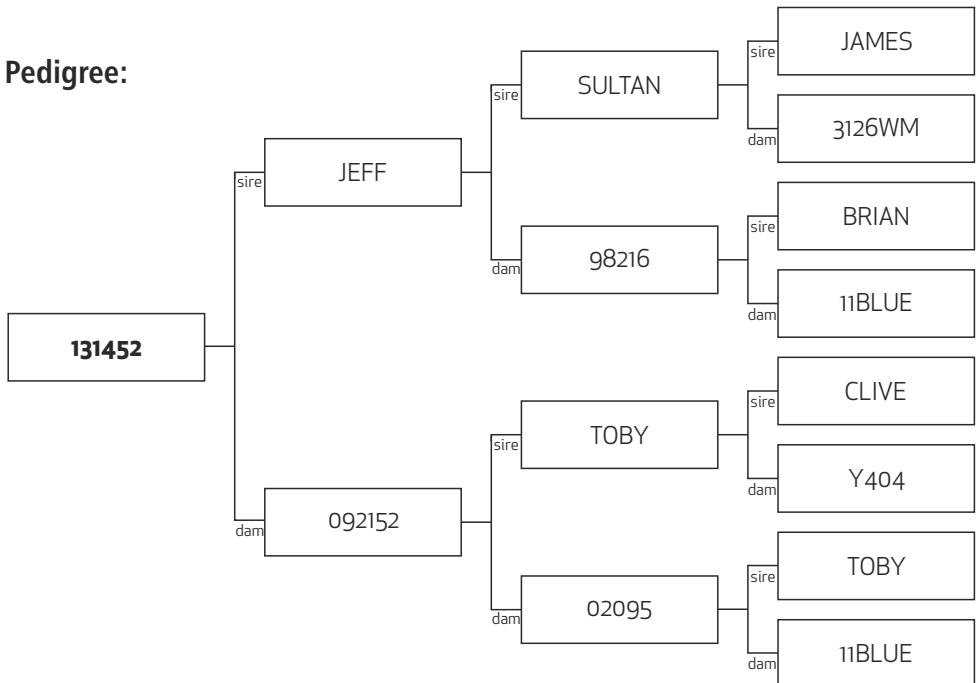


## PEEL FOREST

ESTATE

RED DEER GENETICS

### Pedigree:



**Sale Weight:**

**Price:**

**Buyer:**

**KEY:** W12eBV - Weight at 12 months of age, MVWeBV - Mature velvet weight, MWTeBV - Mature hind weight, WWTeBV - Weaning weight, WWTMeBV - Weaning weight maternal (milking ability), EMACeBV - Eye muscle area

# Lot # 34 - 13795

**BREED Type** 7/8 ENGLISH, 1/8 GERMAN

**W12BV** 8.13

**MVWTBV** 1.04

**MWTBV** 6.08

**WWTBV** 3.53

**WWTMBV** 0.32

**EMAceBV** 0.52

**Yearling Weight** 109 Kg (25/11/14)

**3yr Velvet**

**2yr Velvet** 3 Kg A2S

**Comment**

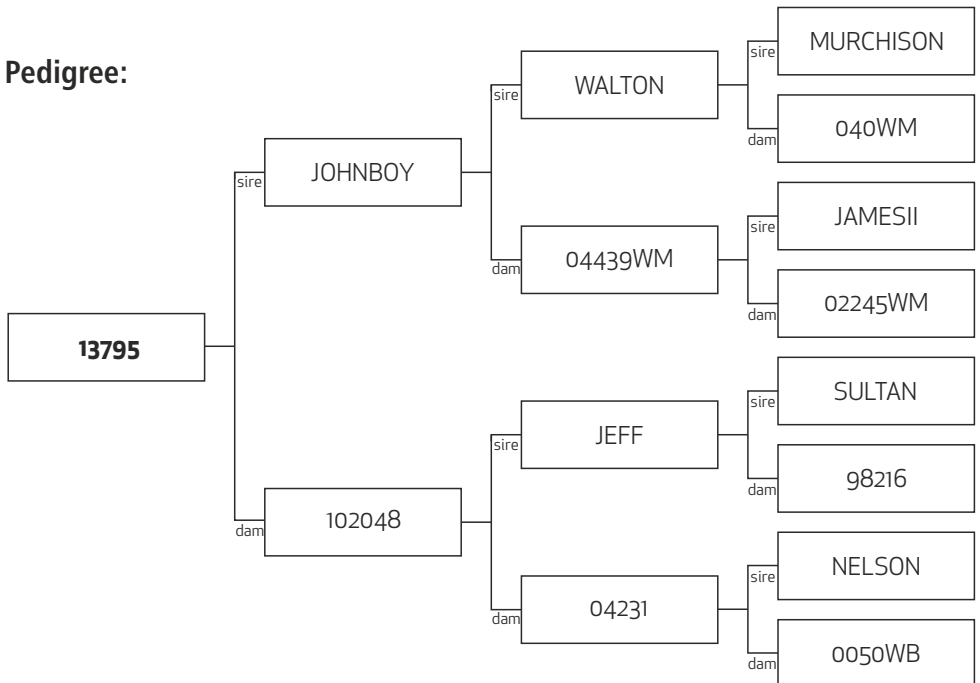


## PEEL FOREST

ESTATE

RED DEER GENETICS

### Pedigree:



**Sale Weight:**

**Price:**

**Buyer:**

**KEY:** W12eBV - Weight at 12 months of age, MVWeBV - Mature velvet weight, MWTeBV - Mature hind weight, WWTeBV - Weaning weight, WWTMeBV - Weaning weight maternal (milking ability), EMACeBV - Eye muscle area

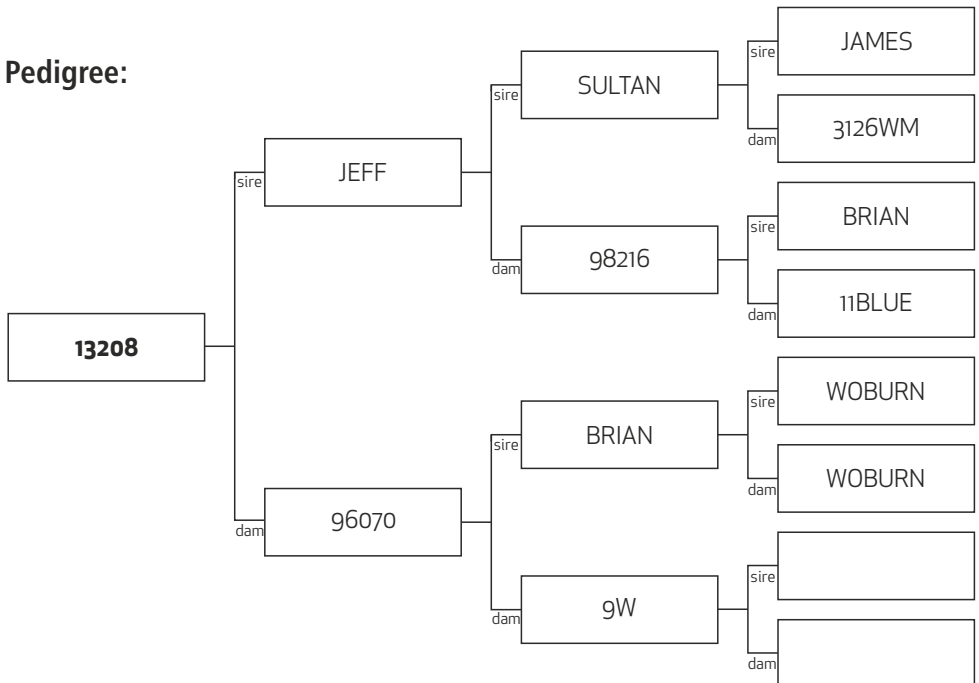
# Lot # 35 - 13208

**BREED Type** PURE ENGLISH  
**W12BV** 7.38  
**MVWTBV** 0.81  
**MWTBV** 7.2  
**WWTBV** 3.02  
**WWTMBV** -0.49  
**EMAcBV** 0.32  
**Yearling Weight** 102 Kg (25/11/14)  
**3yr Velvet**  
**2yr Velvet** 3.2 Kg A2S  
**Comment**



**PEEL FOREST**  
ESTATE  
RED DEER GENETICS

## Pedigree:



**Sale Weight:**

**Price:**

**Buyer:**

**KEY:** W12eBV - Weight at 12 months of age, MVWeBV - Mature velvet weight, MWTeBV - Mature hind weight, WWTeBV - Weaning weight, WWTMeBV - Weaning weight maternal (milking ability), EMAcBV - Eye muscle area

# Lot # 36 - 13861

**BREED Type** PURE ENGLISH

**W12BV** 7.37

**MVWTBV** 0.53

**MWTBV** 6.75

**WWTBV** 2.27

**WWTMBV** -0.58

**EMAceBV** -0.07

**Yearling Weight** 105.5 Kg (25/11/14)

**3yr Velvet** 4.5 Kg SA2

**2yr Velvet** 2.6 Kg A2S

**Comment**

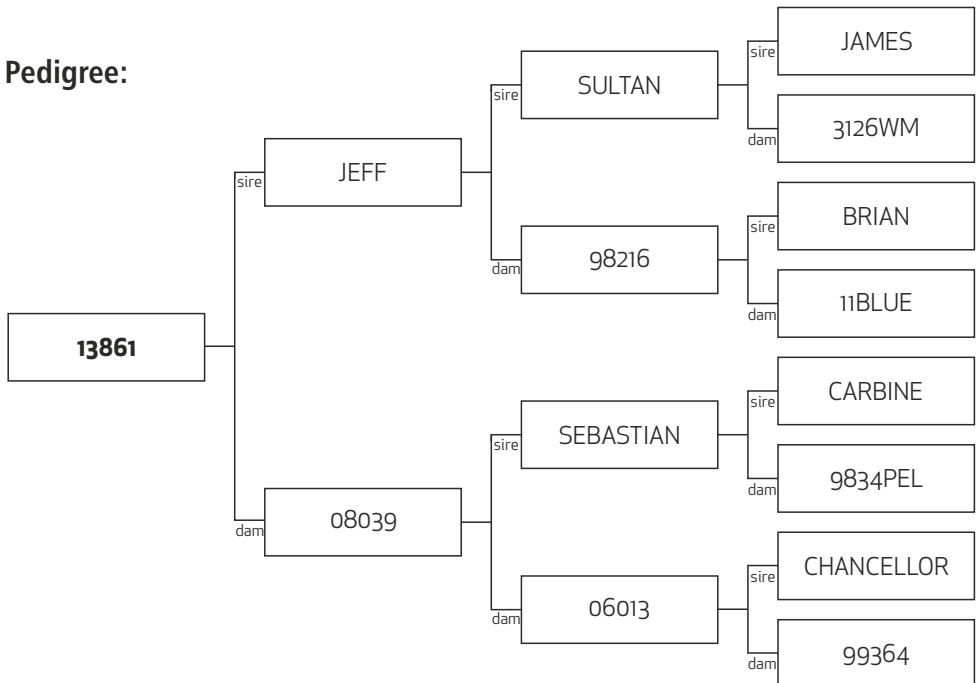


## PEEL FOREST

ESTATE

RED DEER GENETICS

### Pedigree:



**Sale Weight:**

**Price:**

**Buyer:**

**KEY:** W12eBV - Weight at 12 months of age, MVWeBV - Mature velvet weight, MWTeBV - Mature hind weight, WWTeBV - Weaning weight, WWTMeBV - Weaning weight maternal (milking ability), EMACeBV - Eye muscle area



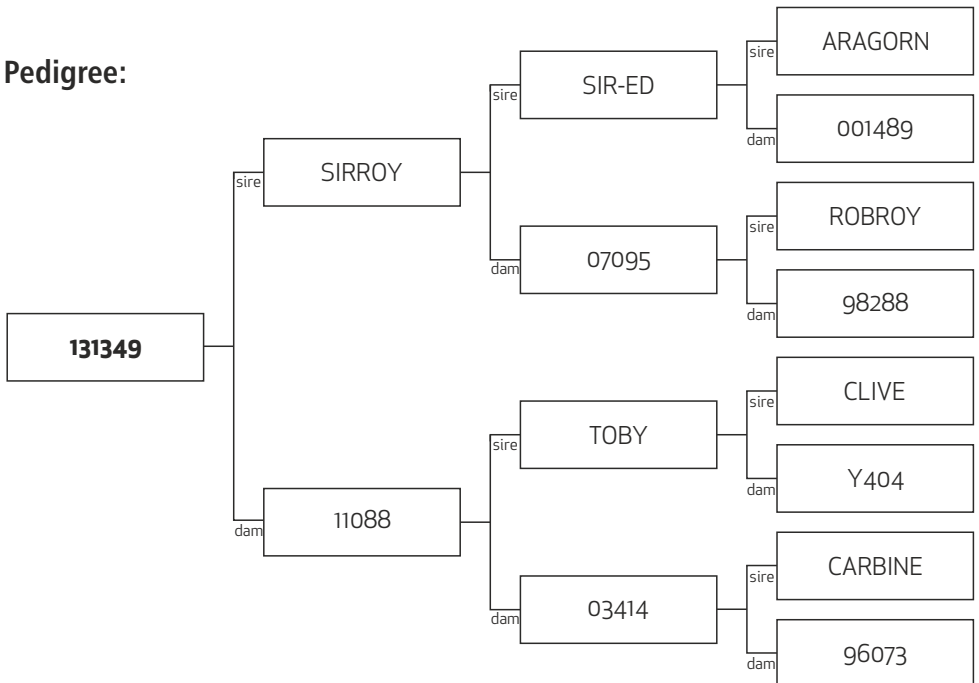
# Lot # 37 - 131349

**BREED Type** PURE ENGLISH  
**W12BV** 7.2  
**MVWTBV** 0.68  
**MWTBV** 2.14  
**WWTBV** 6.67  
**WWTMBV** -0.06  
**EMAceBV** -0.21  
**Yearling Weight** 105 Kg (25/11/14)  
**3yr Velvet** 4.5 Kg SA2  
**2yr Velvet** 3.2 Kg B2S A2S  
**Comment**



**PEEL FOREST**  
ESTATE  
RED DEER GENETICS

## Pedigree:



**Sale Weight:**

**Price:**

**Buyer:**

**KEY:** W12eBV - Weight at 12 months of age, MVWeBV - Mature velvet weight, MWTeBV - Mature hind weight, WWTeBV - Weaning weight, WWTMeBV - Weaning weight maternal (milking ability), EMACeBV - Eye muscle area

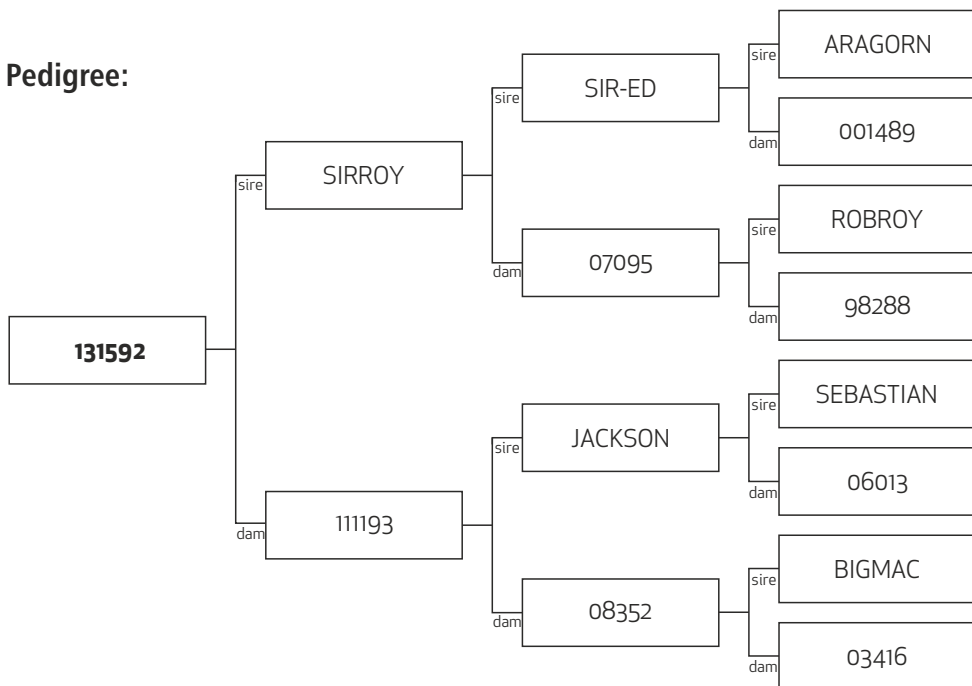
# Lot # 38 - 131592

<b>BREED Type</b>	PURE ENGLISH
<b>W12BV</b>	6.92
<b>MVWTBV</b>	0.57
<b>MWTBV</b>	2.55
<b>WWTBV</b>	3.55
<b>WWTMBV</b>	-0.43
<b>EMAceBV</b>	-0.18
<b>Yearling Weight</b>	103.5 Kg (25/11/14)
<b>3yr Velvet</b>	5.2 Kg SA2
<b>2yr Velvet</b>	
<b>Comment</b>	



**PEEL FOREST**  
ESTATE  
RED DEER GENETICS

## Pedigree:



**Sale Weight:**

**Price:**

**Buyer:**

**KEY:** W12eBV - Weight at 12 months of age, MVWeBV - Mature velvet weight, MWTeBV - Mature hind weight, WWTeBV - Weaning weight, WWTMeBV - Weaning weight maternal (milking ability), EMACeBV - Eye muscle area

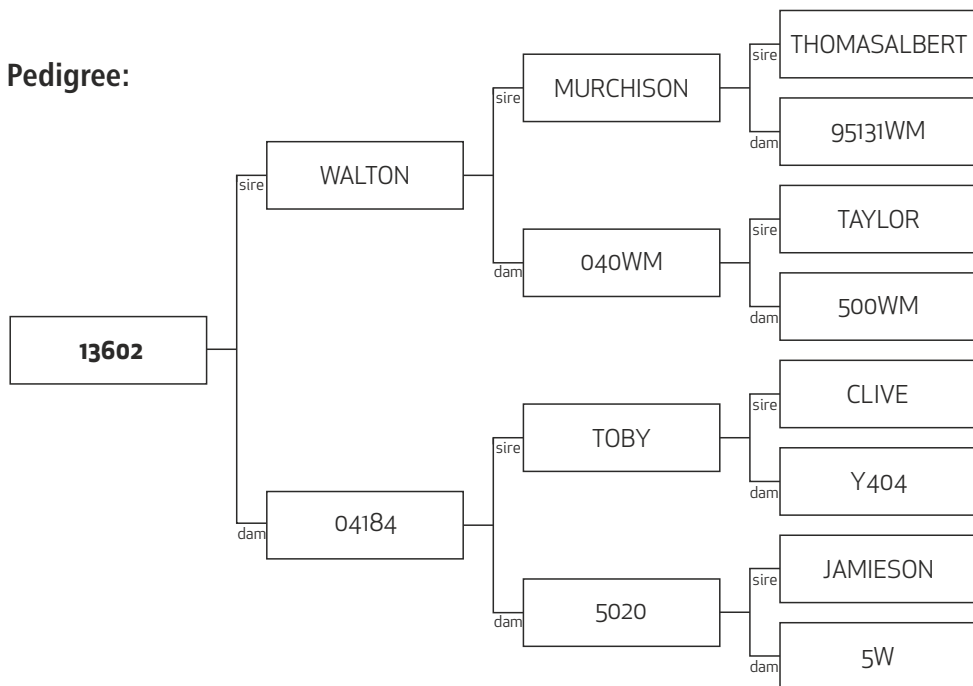
# Lot # 39 - 13602

**BREED Type** PURE ENGLISH  
**W12BV** 6.5  
**MVWTBV** 1.33  
**MWTBV** 4.14  
**WWTBV** 3.04  
**WWTMBV** 0.07  
**EMAceBV** 0.46  
**Yearling Weight** 107 Kg (25/11/14)  
**3yr Velvet**  
**2yr Velvet** 3.2 Kg C2LT  
**Comment**



**PEEL FOREST**  
ESTATE  
RED DEER GENETICS

## Pedigree:



**Sale Weight:**

**Price:**

**Buyer:**

**KEY:** W12eBV - Weight at 12 months of age, MVWeBV - Mature velvet weight, MWTeBV - Mature hind weight, WWTeBV - Weaning weight, WWTMeBV - Weaning weight maternal (milking ability), EMACeBV - Eye muscle area

# Lot # 40 - 13610

**BREED Type** PURE ENGLISH

**W12BV** 6.36

**MVWTBV** 0.88

**MWTBV** 4.16

**WWTBV** 3.91

**WWTMBV** 0.04

**EMAceBV** 0.6

**Yearling Weight** 116.5 Kg (25/11/14)

**3yr Velvet**

**2yr Velvet** 2.6 Kg C2S

**Comment**

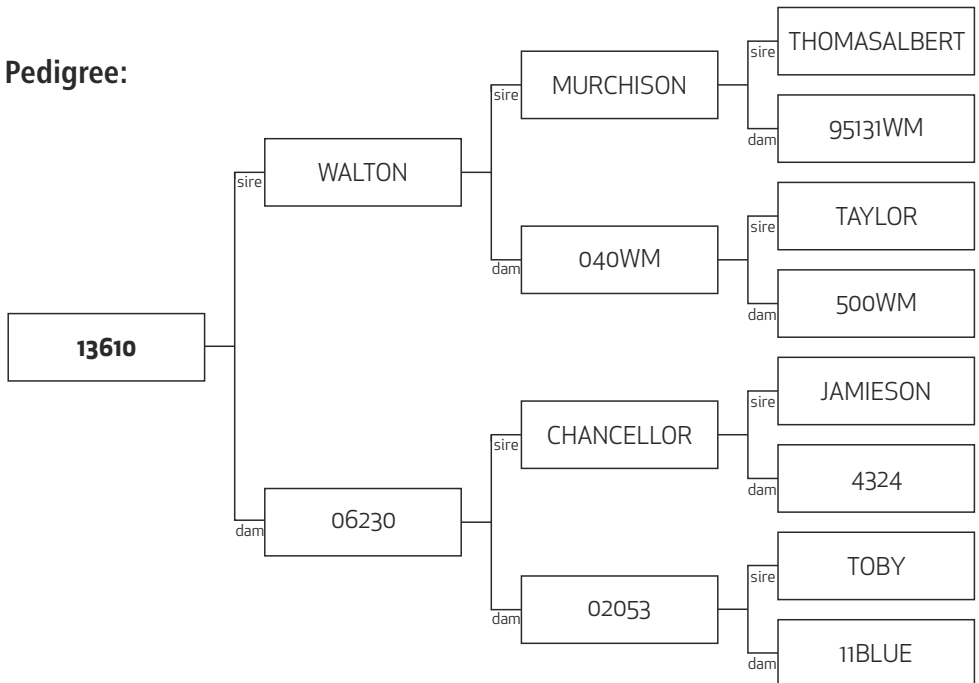


## PEEL FOREST

ESTATE

RED DEER GENETICS

### Pedigree:



**Sale Weight:**

**Price:**

**Buyer:**

**KEY:** W12eBV - Weight at 12 months of age, MVWeBV - Mature velvet weight, MWTeBV - Mature hind weight, WWTeBV - Weaning weight, WWTMeBV - Weaning weight maternal (milking ability), EMACeBV - Eye muscle area

# Lot # 41 - 131325

**BREED Type** 1/2 ENGLISH, 1/2 EURO

**W12BV** 18.12

**MVWTBV** 0.55

**MWTBV** 15.77

**WWTBV** 12.39

**WWTMBV** 0.84

**EMAceBV** 0.08

**Yearling Weight** 115.5 Kg (25/11/14)

**3yr Velvet** 3.5 Kg A2S

**2yr Velvet** 2.8 Kg B2S

**Comment**

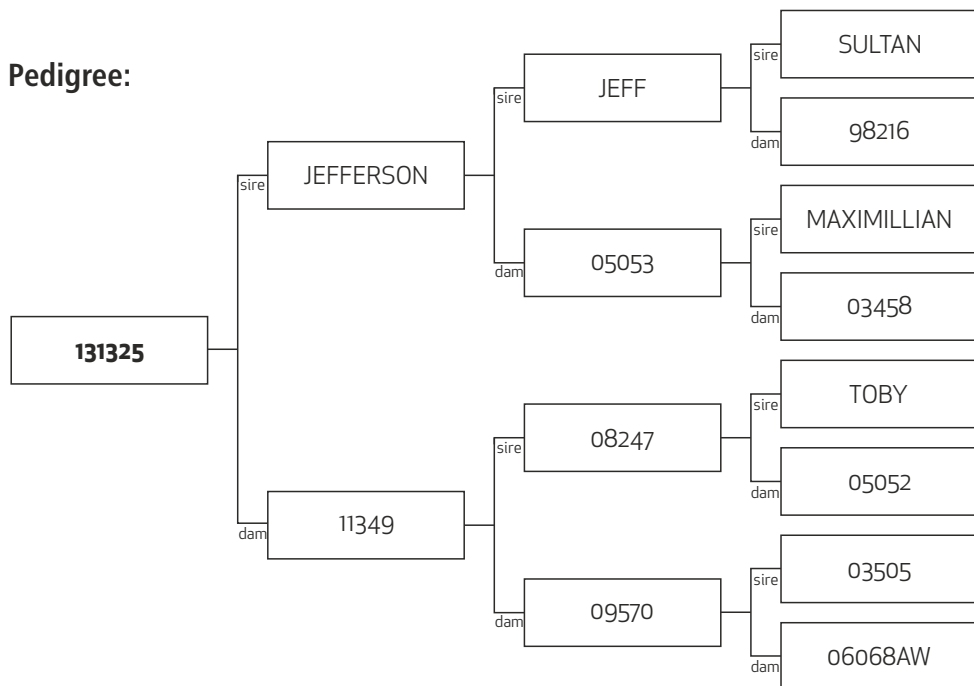


## PEEL FOREST

ESTATE

RED DEER GENETICS

### Pedigree:



**Sale Weight:**

**Price:**

**Buyer:**

**KEY:** W12eBV - Weight at 12 months of age, MVWeBV - Mature velvet weight, MWTeBV - Mature hind weight, WWTeBV - Weaning weight, WWTMeBV - Weaning weight maternal (milking ability), EMACeBV - Eye muscle area

# Lot # 42 - 131436

**BREED Type** 1/2 ENGLISH, 1/2 EURO

**W12BV** 17.34

**MVWTBV** 0.43

**MWTBV** 11.79

**WWTBV** 10.6

**WWTMBV** -0.07

**EMAceBV** -0.13

**Yearling Weight** 124.5 Kg (25/11/14)

**3yr Velvet** 4.3 Kg A2S

**2yr Velvet** 2.8 Kg C2M

**Comment**

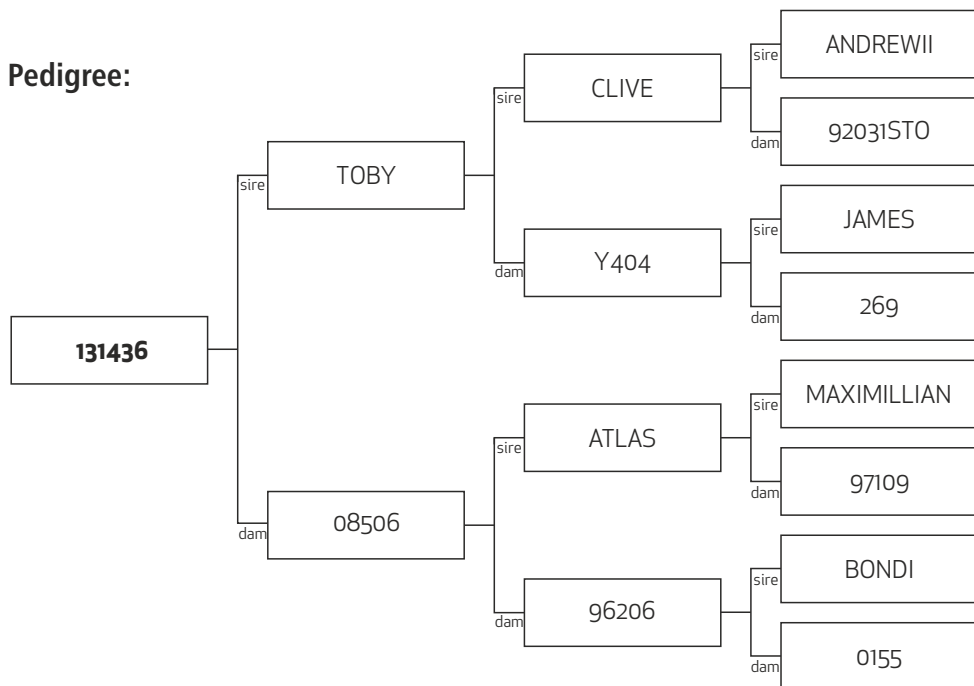


## PEEL FOREST

ESTATE

RED DEER GENETICS

### Pedigree:



**Sale Weight:**

**Price:**

**Buyer:**

**KEY:** W12eBV - Weight at 12 months of age, MVWeBV - Mature velvet weight, MWTeBV - Mature hind weight, WWTeBV - Weaning weight, WWTMeBV - Weaning weight maternal (milking ability), EMACeBV - Eye muscle area

# Lot # 43 -131268

**BREED Type** 5/8 ENGLISH, 3/8 EURO

**W12BV** 11.3

**MVWTBV** 0.86

**MWTBV** 10.69

**WWTBV** 7.21

**WWTMBV** 0.17

**EMAceBV** -0.28

**Yearling Weight** 103.5 Kg (25/11/14)

**3yr Velvet** 5.0 Kg A2M

**2yr Velvet** 3.2 Kg B2S A2S

**Comment**

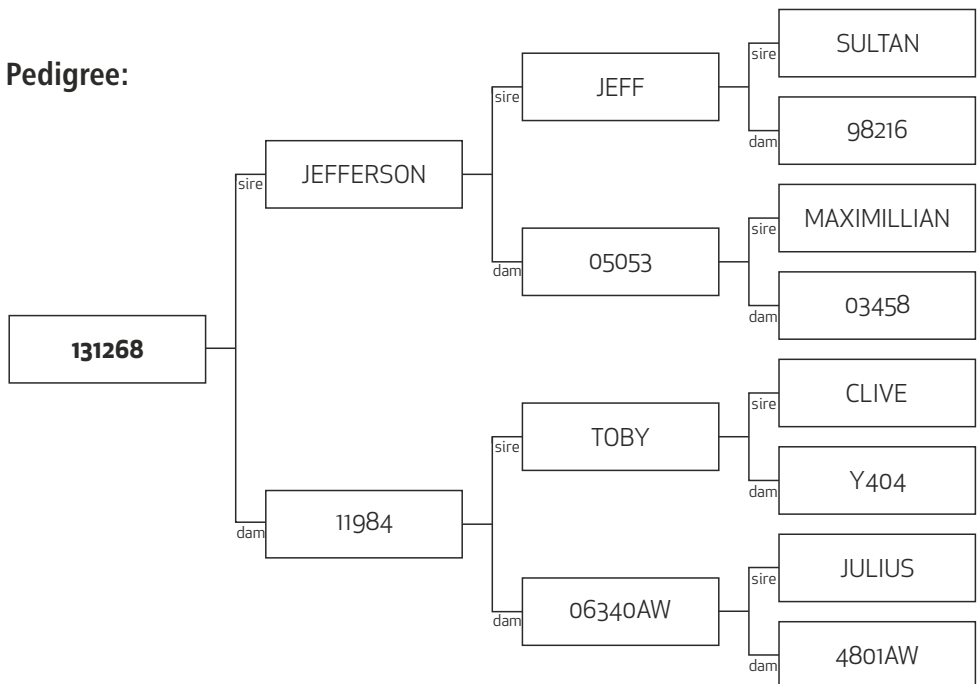


## PEEL FOREST

ESTATE

RED DEER GENETICS

### Pedigree:



**Sale Weight:**

**Price:**

**Buyer:**

**KEY:** W12eBV - Weight at 12 months of age, MVWeBV - Mature velvet weight, MWTeBV - Mature hind weight, WWTeBV - Weaning weight, WWTMeBV - Weaning weight maternal (milking ability), EMACeBV - Eye muscle area

# Lot # 44 - 13854

**BREED Type** 5/8 ENGLISH, 2/8 GERMAN

**W12BV** 8.81

**MVWTBV** 0.9

**MWTBV** 6.76

**WWTBV** 3.47

**WWTMBV** 0.25

**EMAceBV** 0.69

**Yearling Weight** 109 Kg (25/11/14)

**3yr Velvet**

**2yr Velvet** 3.4 Kg B2S A2S

**Comment**

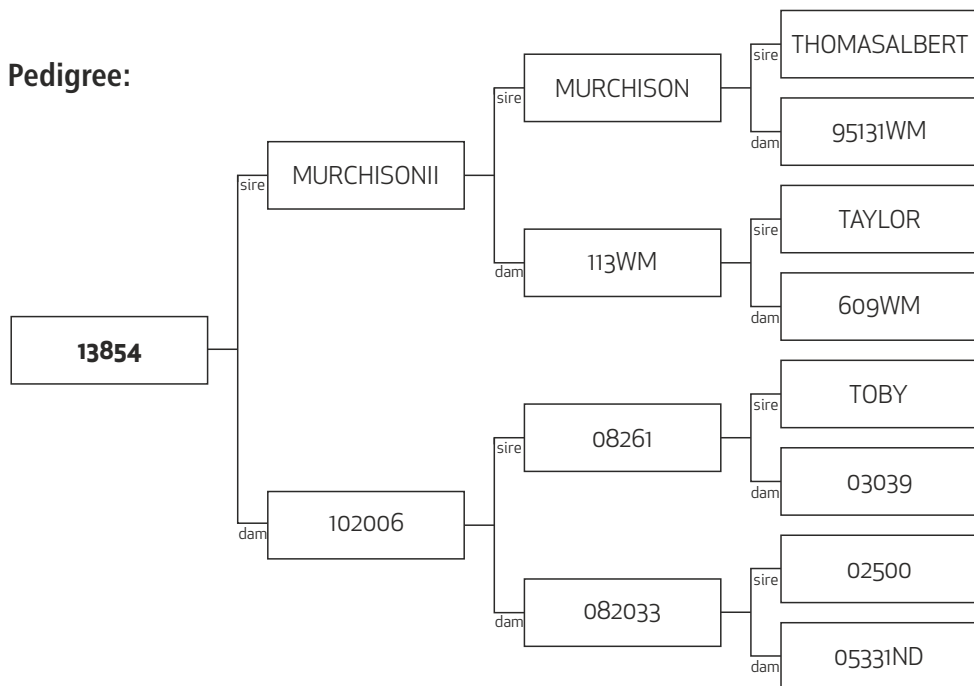


## PEEL FOREST

ESTATE

RED DEER GENETICS

### Pedigree:



**Sale Weight:**

**Price:**

**Buyer:**

**KEY:** W12eBV - Weight at 12 months of age, MVWeBV - Mature velvet weight, MWTeBV - Mature hind weight, WWTeBV - Weaning weight, WWTMeBV - Weaning weight maternal (milking ability), EMACeBV - Eye muscle area



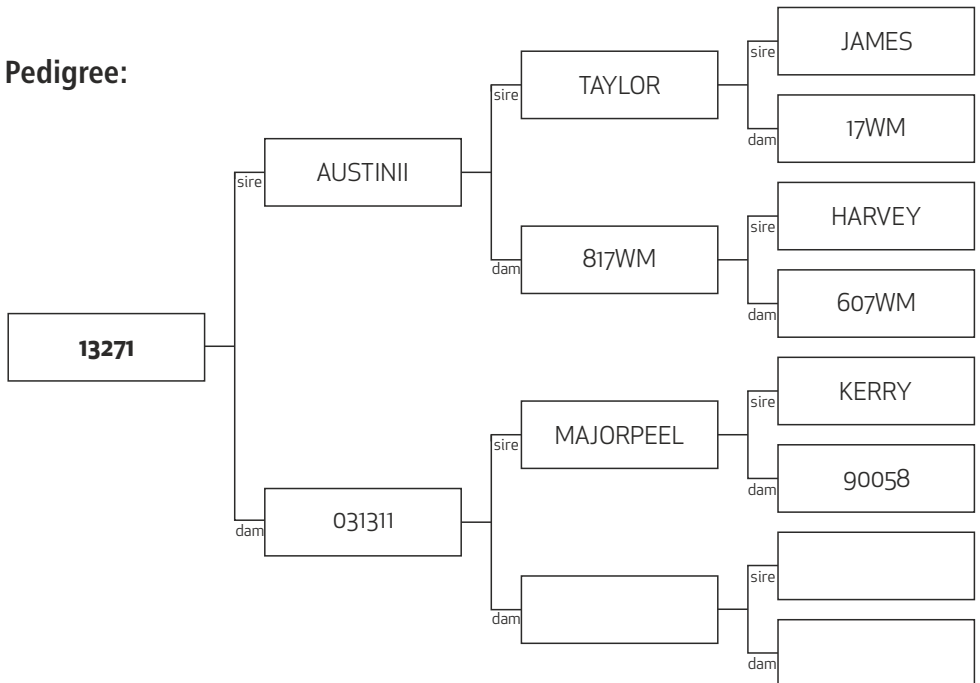
# Lot # 45 - 13271

**BREED Type** PURE ENGLISH  
**W12BV** 8.45  
**MVWTBV** 0  
**MWTBV** 5.21  
**WWTBV** 3.67  
**WWTMBV** -1.37  
**EMAceBV** 0.22  
**Yearling Weight** 110 Kg (25/11/14)  
**3yr Velvet**  
**2yr Velvet** 2.2 Kg A2S  
**Comment**



**PEEL FOREST**  
ESTATE  
RED DEER GENETICS

## Pedigree:



**Sale Weight:**

**Price:**

**Buyer:**

**KEY:** W12eBV - Weight at 12 months of age, MVWeBV - Mature velvet weight, MWTeBV - Mature hind weight, WWTeBV - Weaning weight, WWTMeBV - Weaning weight maternal (milking ability), EMACeBV - Eye muscle area

# Lot # 46 - 131332

**BREED Type** 6/8 ENGLISH, 2/8 EURO

**W12BV** 8.26

**MVWTBV** 0.77

**MWTBV** 9.09

**WWTBV** 4.75

**WWTMBV** -0.97

**EMAceBV** -0.02

**Yearling Weight** 98.5 Kg (25/11/14)

**3yr Velvet** 4.9 Kg SA2

**2yr Velvet** 2.8 Kg A3S B2S

**Comment**

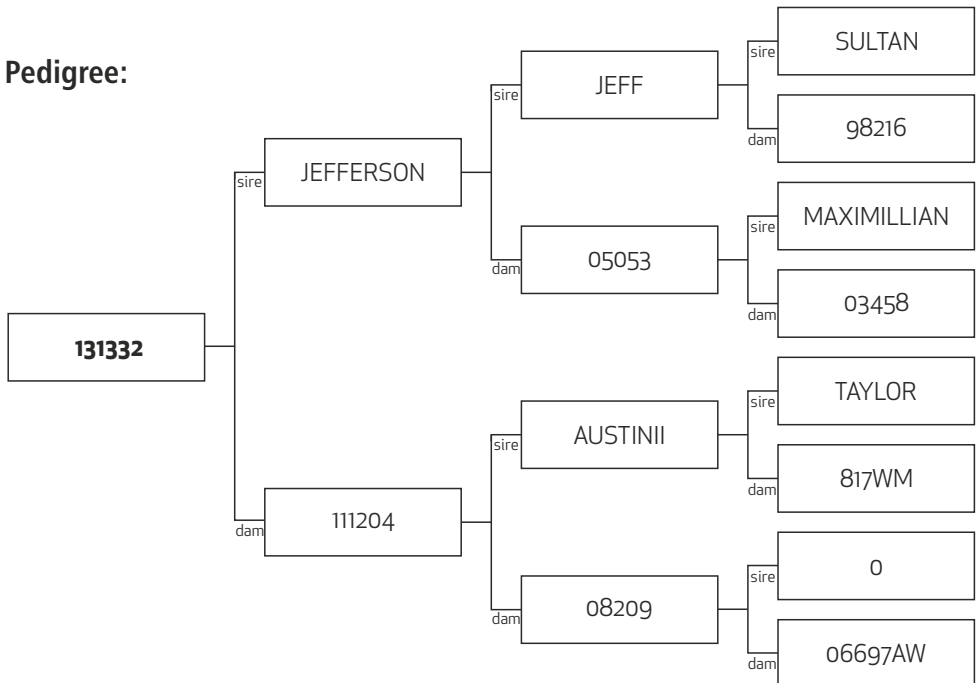


## PEEL FOREST

ESTATE

RED DEER GENETICS

### Pedigree:



**Sale Weight:**

**Price:**

**Buyer:**

**KEY:** W12eBV - Weight at 12 months of age, MVWeBV - Mature velvet weight, MWTeBV - Mature hind weight, WWTeBV - Weaning weight, WWTMeBV - Weaning weight maternal (milking ability), EMACeBV - Eye muscle area

# Lot # 47 - 13605

**BREED Type** 6/8 ENGLISH, 2/8 GERMAN

**W12BV** 7.31

**MVWTBV** 0.44

**MWTBV** 4.76

**WWTBV** 5.36

**WWTMBV** 0.73

**EMAceBV** 0.49

**Yearling Weight** 102 Kg (25/11/14)

**3yr Velvet**

**2yr Velvet** 2 Kg B2S

**Comment**

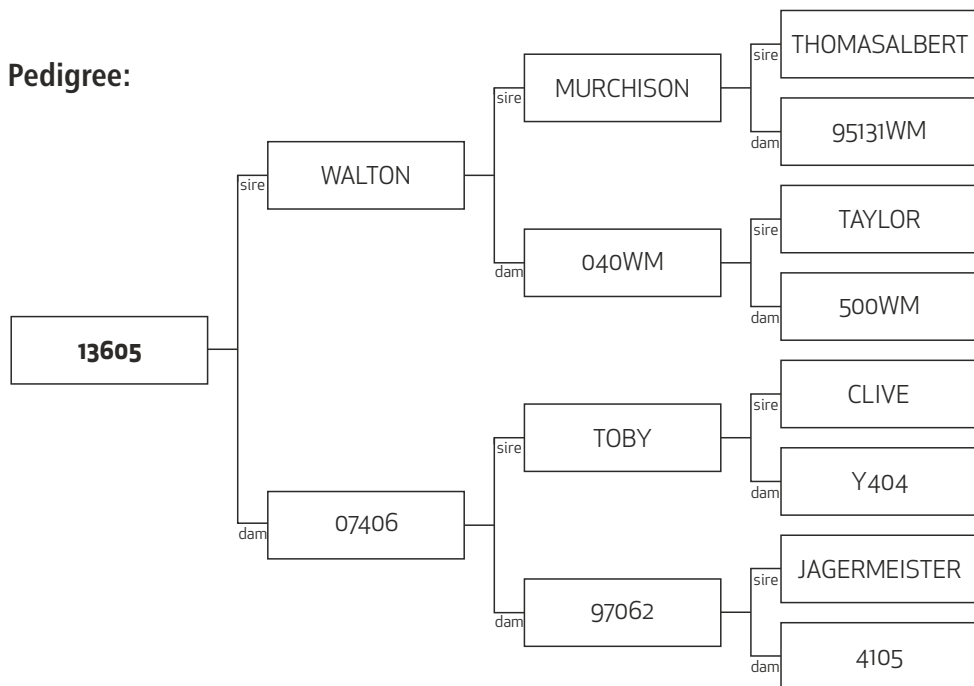


## PEEL FOREST

ESTATE

RED DEER GENETICS

### Pedigree:



**Sale Weight:**

**Price:**

**Buyer:**

**KEY:** W12eBV - Weight at 12 months of age, MVWeBV - Mature velvet weight, MWTeBV - Mature hind weight, WWTeBV - Weaning weight, WWTMeBV - Weaning weight maternal (milking ability), EMACeBV - Eye muscle area

# DELIVERY INSTRUCTIONS

**Purchaser:** \_\_\_\_\_

**Address:** \_\_\_\_\_

**Phone/Fax:** \_\_\_\_\_

**Email:** \_\_\_\_\_

**NAIT No.:** \_\_\_\_\_

## LOTS PURCHASED

Lot Number	Price	Lot Number	Price

**Total \$:** \_\_\_\_\_

**Forward Invoice To:** \_\_\_\_\_

**Insurance Required? YES / NO**

## DELIVERY INSTRUCTIONS:

**Destination:** \_\_\_\_\_

**Buyer/Agent Signature:** \_\_\_\_\_

**SPECIAL CONDITIONS**

# DIRECTIONS



## **Directions to Peel Forest Estate from Christchurch:**

Follow State Highway 1 through Ashburton south to Hinds. In the middle of Hinds turn right at the sign to Peel Forest, then 2nd left at sign to Peel Forest travelling along Hinds Arundel Rd approx. 15km.

At the “T” junction turn left onto Highway 72, go over to Rangitata River and then immediately turn right to Arundel. Up the hill and turn right to Peel Forest.

## **Directions to Peel Forest Estate from Dunedin:**

Travelling north from Dunedin, follow State Highway 1 through Timaru to Winchester, north of Temuka.

Turn left to Geraldine following Highway 72, through Geraldine, veering left after the one lane Orari Bridge, following sign to Peel Forest. Turn left into Peel Forest Rd after Coopers Creek Bridge and travel approx. 12 km.

After the Peel Forest Village roadside sign turn left onto Dennistoun Road, a single lane gravel road with a double row of beech planted on each side. GO straight through the white wooden gates which will be open and continue over to cattlestop into a woodland, up through the trees over the 2nd cattlestop and then fork to your right to the sales complex. Please park in the designated car park.

We look forward to seeing you!



for all enquiries contact  
KRIS ORANGE  
Phone 0800 163 013  
Email kris@downlandsdeer.co.nz



**NZ Deer Farmers preferred stud stock carriers**

Quality assured drivers and crates to DINZ QA Programme

Rubber Matting and sprinkler systems in crates

Lairage facilities (overnight) available in Geraldine

**SATISFACTION GUARANTEED**

# Today more than ever, **service matters.**



**For years, farmers have trusted and relied on Woodley's, with good reason.**

Offering cost effective nationwide livestock transport – both down the road, or inter-island.

Our dedicated team of drivers deliver a professional customer focused service to farmers transport needs, daily. At Woodley's, we pride ourselves on our no nonsense, get on and do it attitude.

**Call us. You won't regret it. You'll only wonder why you didn't earlier.**



**Phone** 0800 693 7377 or 03 693 7377  
1 St Andrews Street, Geraldine  
[extramile@woodleys.co.nz](mailto:extramile@woodleys.co.nz)  
[www.woodleys.co.nz](http://www.woodleys.co.nz)

 **Woodley's**  
Going the extra mile



PEEL FOREST  
ESTATE  
RED DEER GENETICS

STEVE BLANCHARD  
PEEL FOREST ESTATE  
1 BRAKE ROAD, RD 22, GERALDINE 7992  
NEW ZEALAND  
(03) 696 3859 / 0800 DEER4U  
steve@peelforestestate.com

[www.peelforestdeergenetics.com](http://www.peelforestdeergenetics.com)