

Sale Stags

STAG CATALOGUE 2016/17

Sire Selection

Terminal & Maternal Lines

Terminal Sires

We have available a selection of Terminal stags, which we've bred especially for the job. At 25 BV (12 month weight Breeding Value), these will be very competitive and offer you the benefits of using a Terminal Red stag.

Maternal Sires (Eastern)

A selection of Eastern Maternal stags are available with BV's ranging from 21BV to 33BV.

There's a lot to be said for genetic gain. Like reaching target weight faster.

When you're looking at breeding your hinds this year, think about what you want to achieve. If it's reaching target weight faster, a genetically improved weaner will get there faster than an average weaner, using less feed over less time.

A 2kg gain in weight, per animal, per year. It all adds up.

With Deer Improvement stags, you can get a 2kg genetic gain in yearling weight, every year. The proof is there in DEERSelect and in the Deer Progeny Test.

Genetic improvement offers you the best opportunity for productivity improvement that will grow with you year on year. And Deer Improvement's proven sires and AI team offer you the best opportunity for genetic improvement.

You have more to gain than you have to lose.

All the best from the team at Deer Improvement.

If you'd like to find out more, give us a call:

Bruce McGregor 027 233 2063
General Manager

Sherryn Smith
Administration

03 442 7062





Breeding Values & Indexes in this catalogue

The DEERSelect database stores data on:

- 12 month weight (measurement for growth rate)
- Mature Hind Weight (measurement for efficiency - the HIGHER the BV, the LOWER the efficiency)
- Foetal Aging (measurement for fertility - the LOWER the BV, the HIGHER the fertility)
- Carcass Yield (measurement for the real value of carcass - the HIGHER the BV, the HIGHER the value)

Breeding Values (BVs) for these traits are calculated independently by AgResearch.

Breeding Values and Breeding Indexes

BVs describe the genetic superiority of individual animals for specific traits such as growth rate, yield, efficiency, and fertility.

In livestock production systems, because there are usually several traits with an impact on farm profitability, it is common for these to be weighted to reflect their economic contribution, and then combined to form a single "economic index".

In different farming systems the financial impact of each trait will vary, and so economic indexes can be calculated for each farming

system, and the indexes may have different traits or different weighting on the individual traits.

For example, in farming for venison, the traits required by a terminal system are different to those of a replacement system. Mature hind weight is of little consequence in a terminal system as hinds are not kept for breeding, but this trait is of interest in a replacement system. This is why DEERSelect produces two economic indexes.

Selecting stags based on the R-EarlyKill (Replacement Index) or Terminal (Terminal Index) is a lot easier than trying to figure out how to put a value on the stag based on the BVs for several individual traits.

The Replacement Index includes all traits: growth rate, mature hind weight, early conception date, and carcass traits.

In a terminal system all progeny are slaughtered as yearlings so the Terminal Index includes only growth rate and carcass traits.

Farmers using a terminal system should use the Terminal Index as a selection tool for terminal sires, but should breed or buy replacement hinds sired by high-ranking R-EarlyKill stags.

The DEERSelect values used in this catalogue are as at August 2016.



Eastern Sire Information

Twenty four sires produced our 2014 born Sales Stags.

Photographs of the most prominent sires follow:

AUGUST 2016

The table here shows the **top 30 Sire Stags** in the industry ranked on the 12 Month Weight Breeding Value, and the individual trait BVs are also provided for each animal:

- **W12eBV** is BV for 12 Month Weight
- **CWeBV** is Carcass Yield
- **WWTeBV** is Weaning Weight
- **MWTeBV** is Mature Hind Weight
- **EMAceBV** is Eye Muscle Area
- **CDeBV** is Early Conception Date
- **R-EarlyKill** is the Replacement Index, which combines all traits: growth rates, carcass traits and early conception date.
- **Terminal** is the Terminal Index, which combines only 12 month weight, weaning weight and carcass traits.

Current Tag	Sire	No Progeny	W12eBV	CWeBV	WWTeBV	MWTeBV	EMAceBV	CDeBV	R-EarlyKill	Terminal	Current Flock Prefix
RAFAEL	Nadal	90	+34.1	+17.5	+21.8	+25.0	0.72	1	\$25.62	\$56.55	Deer Improvement
DARWIN	Galileo	150	+32.1	+15.9	+18.9	+21.0	2.33	-4.5	\$26.91	\$52.19	Deer Improvement
GEMINI	Gagarin	341	+32.0	+15.7	+17.5	+24.3	0.51	-2.6	\$23.29	\$50.33	Deer Improvement
RONALDO	Nadal	23	+32.0	+16.5	+21.3	+23.7	0.31	1.9	\$23.58	\$53.05	Deer Improvement
MESSI	Nadal	30	+31.8	+16.3	+21.7	+23.4	0.62	1.9	\$23.58	\$52.95	Deer Improvement
CROMWELL	Bendigo	58	+31.3	+16.4	+19.1	+22.3	0.2	-0.8	\$25.11	\$53.01	Deer Improvement
13196	Nadal	12	+30.6	+15.4	+19.5	+23.9	0.48	2.3	\$21.01	\$49.49	Deer Improvement
LILLYBANK	Bendigo	45	+30.1	+15.3	+20.4	+22.0	1.5	0.4	\$23.11	\$50.36	Deer Improvement
NADAL*	Ivan	672	+29.6	+15.2	+18.7	+22.1	-0.43	3.9	\$20.25	\$48.01	Deer Improvement
13259	Frankel	27	+29.6	+15.3	+21.1	+21.6		-4.7	\$25.73	\$51.00	Deer Improvement
13167	Tundra	5	+29.3	+14.8	+20.4	+20.7	0.56	0.3	\$21.83	\$47.58	Deer Improvement
13113	Nadal	10	+28.9	+14.9	+19.3	+21.8	0.71	2	\$21.23	\$48.38	Deer Improvement
13138	Tundra	18	+28.8	+14.5	+19.1	+20.6	0.54	0.1	\$21.19	\$46.39	Deer Improvement
13302	Bavaria	11	+28.6	+14.3	+18.9	+19.8			\$23.17	\$46.41	Deer Improvement
BERETTA	Lazio	114	+28.2	+14.1	+17.2	+20.5	1.25	-2.4	\$22.03	\$46.03	Deer Improvement
TUNDRA	Siberia	417/432	+28.0	+14.2	+20.1	+20.0	0.69	1.7	\$20.22	\$45.67	Deer Improvement
RUAHINE		38	+28.0	+13.7	+19.3	+19.5	-0.17	-1.3	\$20.54	\$43.61	Ruapehu
FEDERER	Ivan	59	+27.8	+14.1	+15.7	+20.6	0.14	0.3	\$20.19	\$44.90	Deer Improvement
PRADA	Lazio	140	+27.6	+14.0	+15.0	+19.3	1.07	-6.3	\$23.83	\$45.69	Deer Improvement
13142	Tundra	5	+27.6	+14.3	+20.0	+19.5	-0.26	0.7	\$20.85	\$45.55	Deer Improvement
13188	Tundra	22	+27.5	+13.9	+18.3	+19.8	0.18	0.3	\$19.98	\$44.12	Deer Improvement
13189	Sicily	8	+27.5	+13.9	+18.5	+18.8	1.4	-5	\$23.54	\$45.65	Deer Improvement
GUCCI	Lazio	124	+27.2	+13.9	+17.0	+21.8	-0.66	-1.4	\$19.74	\$44.03	Deer Improvement
VOSTOK	Gagarin	7	+27.2	+13.8	+17.4	+20.9	1.1	-1.8	\$21.11	\$45.34	Deer Improvement
LAZIO	Umbria	1/71	+26.8	+13.6	+15.1	+20.9	1.11	-4.1	\$21.42	\$44.33	Deer Improvement
13177	Nadal	5	+26.7	+13.5	+18.7	+20.1	0.98	3	\$18.52	\$43.73	Deer Improvement
13213	Lorenzo	6	+26.7	+13.6	+17.4	+19.6			\$20.99	\$43.97	Deer Improvement
520/13		9	+26.6	+10.7	+15.1	+17.7	2.36	-5.5	\$16.85	\$34.46	Wilkins Farming
GAGARIN	Czar	199/564	+26.3	+12.9	+16.0	+22.0	1.59	1	\$17.85	\$42.81	Deer Improvement
13158	Sicily	14	+26.1	+13.2	+17.6	+19.2	1.01	-2.9	\$21.10	\$43.57	Deer Improvement



BERETTA (taken Nov 2015)



CROMWELL (taken Nov 2015)



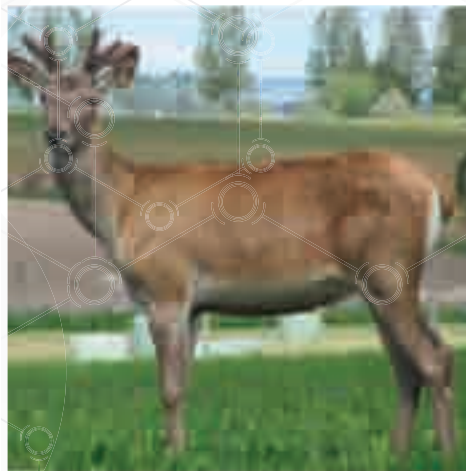
DARWIN (taken Nov 2015)



GEMINI (taken Nov 2014)



LILLYBANK (taken Nov 2014)



NADAL (taken Nov 2013)



PRADA (taken Nov 2014)



TUNDRA (taken Nov 2014)



Eastern Stags sorted by 12 month BV

MFCF-14-208	DEERSelect BV 11/7/16	W12BV	WWTBV	MWTBV	CDeBV	CWeBV	EMAceBV	LEANYeBV	R-Index	T-Index										
		33.31	19.3	24.7	-1.786	16.475	1.515	0.718	2491	5352										
	Price																			
											\$9,000									
	Weight (kgs)	Weaning	Yearling	12.07.2016	MFCF-14-208															
		76.5	152.5	175.5																
											LILLYBANK									
	MFCF-12-397																			
Lazio																				
										MFCF-10-142										

MFCF-14-213	DEERSelect BV 11/7/16	W12BV	WWTBV	MWTBV	CDeBV	CWeBV	EMAceBV	LEANYeBV	R-Index	T-Index	
		33.03	20.7	24.2	-1.827	16.855	1.102	0.567	2592	5475	
	Price	\$9,000									
	Weight (kgs)	Weaning	Yearling	12.07.2016	MFCF-14-213						
		85	151.5	170.5							
	LILLYBANK										Bendigo
											MFCF-10-259
											Lazio
											MFCF-10-142

MFCF-14-169	DEERSelect BV 11/7/16	W12BV	WWTBV	MWTBV	CDeBV	CWeBV	EMAceBV	LEANYeBV	R-Index	T-Index																				
		32.77	21.1	23.8	-1.813	16.865	1.457	1.13	2644	5550																				
	Price																													
											\$9,000																			
	Weight (kgs)	Weaning	Yearling	12.07.2016	MFCF-14-169																									
		87	154.5	179																										
											LILLYBANK																			
																					MFCF-10-259									
Lazio																														
										MFCF-12-442																				
MFCF-10-142																														

MFCF-14-252	DEERSelect BV 11/7/16	W12BV	WWTBV	MWTBV	CDeBV	CWeBV	EMAcBV	LEANYeBV	R-Index	T-Index
		32.57	18.4	25	-2.462	16.355	0.426	0.081	2437	5269
	Price	\$8,000								
	Weight (kgs)	Weaning	Yearling	12.07.2016	MFCF-14-252	GEMINI	MFCF-09-068	Lazio		
		59	132	149						
									MFCF-12-401	MFCF-10-147

Key to DEERSelect values: **W12BV** - 12-month weight (yearling weight) breeding value. **WWTBV** - weaning weight breeding value. **MWTBV** - hind weight. **CDeBV** - conception date breeding value. **CWeBV** - carcass weight breeding value. **EMAceBV** - Eye Muscle Area (size of the muscle/meat on the ribs as measured by ultrasound scanning). **LEANYeBV** - Lean Yield Breeding Value (a prediction of the total lean meat on a carcass measured by ultrasound scanning and by correlations with weight). **R-Index** - W12BV, MWTBV, CDeBV + CWeBV. **T-Index** - W12BV + CWeBV.

MFCF-14-210	DEERSelect BV 11/7/16	W12BV	WWTBV	MWTBV	CDeBV	CWeBV	EMAceBV	LEANYeBV	R-Index	T-Index		
		32.07	18.3	22.7	-4.476	15.905	1.627	0.69	2576	5183		
	Price											
											\$9,000	
	Weight (kgs)	Weaning	Yearling	12.07.2016	MFCF-14-210							
		83	160.5	177								
	MFCF-14-210										Galileo	
												DARWIN
											MFCF-12-461	Lazio

MFCF-14-218	DEERSelect BV 11/7/16	W12BV	WWTBV	MWTBV	CDeBV	CWeBV	EMAcBV	LEANYeBV	R-Index	T-Index
		32	18.4	23.5	-2.239	16.305	1.586	1.145	2569	5393
	Price									
	Weight (kgs)	Weaning	Yearling	12.07.2016	MFCF-14-218	CROMWELL	Bendigo			
		79.5	160	181				MFCF-09-090		

Key to DEERSelect values: **W12BV** - 12-month weight (yearling weight) breeding value. **WWTBV** - weaning weight breeding value. **MWTBV** - hind weight. **CDeBV** - conception date breeding value. **CWeBV** - carcass weight breeding value. **EMAceBV** - Eye Muscle Area (size of the muscle/meat on the ribs as measured by ultrasound scanning). **LEANYeBV** - Lean Yield Breeding Value (a prediction of the total lean meat on a carcass measured by ultrasound scanning and by correlations with weight). **R-Index** - W12BV, MWTBV, CDeBV + CWeBV. **T-Index** - W12BV + CWeBV.

MFCF-14-139	DEERSelect BV 11/7/16	W12BV	WWTBV	MWTBV	CDeBV	CWeBV	EMAceBV	LEANYeBV	R-Index	T-Index	
		31.68	19.7	23.6	-2.599	16.305	0.691	0.595	2537	5327	
	Price										
											\$9,000
	Weight (kgs)	Weaning	Yearling	12.07.2016	MFCF-14-139						
		82	154	167.5							
	<div><div>GEMINI</div><div>MFCF-12-451</div><div>MFCF-09-068</div><div>MFCF-10-140</div><div>Naples</div></div>										

MFCF-14-211	DEERSelect BV 11/7/16	W12BV	WWTBV	MWTBV	CDeBV	CWeBV	EMAceBV	LEANYeBV	R-Index	T-Index			
		31.39	19.1	21.8	-2.913	15.755	1.471	0.613	2526	5135			
	Price	MFCF-14-211											
											\$9,000		
	Weight (kgs)										Weaning	Yearling	12.07.2016
											77.5	152	172
	MFCF-14-211									Galileo			
										MFCF-10-120			
										Bendigo			
										MFCF-10-259			

Key to DEERSelect values: **W12BV** - 12-month weight (yearling weight) breeding value. **WWTBV** - weaning weight breeding value. **MWTBV** - hind weight. **CDeBV** - conception date breeding value. **CWeBV** - carcass weight breeding value. **EMAceBV** - Eye Muscle Area (size of the muscle/meat on the ribs as measured by ultrasound scanning). **LEANYeBV** - Lean Yield Breeding Value (a prediction of the total lean meat on a carcass measured by ultrasound scanning and by correlations with weight). **R-Index** - W12BV, MWTBV, CDeBV + CWeBV. **T-Index** - W12BV + CWeBV.

MFCF-14-179	DEERSelect BV 11/7/16	W12BV	WWTBV	MWTBV	CDeBV	CWeBV	EMAceBV	LEANYeBV	R-Index	T-Index	
		31.18	19.4	23	-2.769	15.665	1.7	1.405	2478	5184	
	Price	\$9,000									
	Weight (kgs)	Weaning	Yearling	12.07.2016	MFCF-14-179						
		89	151.5	178.5							
	<div><div></div><div>GEMINI</div><div>MFCF-12-460</div></div> <div><div>Gagarin</div><div>MFCF-09-068</div><div>Lazio</div><div>MFCF-10-139</div></div>										

MFCF-14-148	DEERSelect BV 11/7/16	W12BV	WWTBV	MWTBV	CDeBV	CWeBV	EMAceBV	LEANYeBV	R-Index	T-Index	
		30.11	18.4	22.3	-2.131	15.455	0.375	0.039	2371	5004	
	Price	\$8,000									
	Weight (kgs)	Weaning	Yearling	12.07.2016	MFCF-14-148						
		83.5	149	167							
										Bendigo	
										MFCF-09-090	
									Lazio		
									MFCF-10-147		

Key to DEERSelect values: **W12BV** - 12-month weight (yearling weight) breeding value. **WWTBV** - weaning weight breeding value. **MWTBV** - hind weight. **CDeBV** - conception date breeding value. **CWeBV** - carcass weight breeding value. **EMAceBV** - Eye Muscle Area (size of the muscle/meat on the ribs as measured by ultrasound scanning). **LEANYeBV** - Lean Yield Breeding Value (a prediction of the total lean meat on a carcass measured by ultrasound scanning and by correlations with weight). **R-Index** - W12BV, MWTBV, CDeBV + CWeBV. **T-Index** - W12BV + CWeBV.

MFCF-14-200	DEERSelect BV 11/7/16	W12BV	WWTBV	MWTBV	CDeBV	CWeBV	EMAceBV	LEANYeBV	R-Index	T-Index																				
		29.97	16.7	22	-2.254	14.995	0.088	-0.772	2239	4748																				
	Price																													
											\$8,000																			
	Weight (kgs)	Weaning	Yearling	12.07.2016	MFCF-14-200																									
		79	148	166																										
	MFCF-12-430																													
											BERETTA																			
																					Lazio									
Bendigo																														
										MFCF-09-090																				

MFCF-14-172	DEERSelect BV 11/7/16	W12BV	WWTBV	MWTBV	CDeBV	CWeBV	EMAceBV	LEANYeBV	R-Index	T-Index
		29.92	17.6	22.3	-1.875	15.475	0.492	0.045	2364	5005
	Price									
	Weight (kgs)	Weaning	Yearling	12.07.2016	MFCF-14-172	CROMWELL	Bendigo			
		78	141	162.5						
						MFCF-12-432	MFCF-09-090			
							Lazio			
							MFCF-10-142			

Key to DEERSelect values: **W12BV** - 12-month weight (yearling weight) breeding value. **WWTBV** - weaning weight breeding value. **MWTBV** - hind weight. **CDeBV** - conception date breeding value. **CWeBV** - carcass weight breeding value. **EMAceBV** - Eye Muscle Area (size of the muscle/meat on the ribs as measured by ultrasound scanning). **LEANYeBV** - Lean Yield Breeding Value (a prediction of the total lean meat on a carcass measured by ultrasound scanning and by correlations with weight). **R-Index** - W12BV, MWTBV, CDeBV + CWeBV. **T-Index** - W12BV + CWeBV.

MFCF-14-168	DEERSelect BV 11/7/16	W12BV	WWTBV	MWTBV	CDeBV	CWeBV	EMAceBV	LEANYeBV	R-Index	T-Index
		29.54	18.2	21.3	-2.231	15.065	0.576	0.027	2341	4876
	Price	\$8,000								
	Weight (kgs)	Weaning	Yearling	12.07.2016						
		86.5	149	166.5						
					MFCF-14-168		BERETTA	Lazio		
								MFCF-10-135		
							MFCF-12-430	Bendigo		
								MFCF-09-090		

MFCF-14-137	DEERSelect BV 11/7/16	W12BV	WWTBV	MWTBV	CDeBV	CWeBV	EMAceBV	LEANYeBV	R-Index	T-Index
		29.34	17	21.9	-3.306	14.455	1.064	0.606	2246	4706
	Price	\$8,000								
	Weight (kgs)	Weaning	Yearling	12.07.2016						
		81	147	161						
					MFCF-14-137		GEMINI	Gagarin		
								MFCF-09-068		
							MFCF-12-649	Lazio		
								MFCF-10-138		

Key to DEERSelect values: **W12BV** - 12-month weight (yearling weight) breeding value. **WWTBV** - weaning weight breeding value. **MWTBV** - hind weight. **CDeBV** - conception date breeding value. **CWeBV** - carcass weight breeding value. **EMAceBV** - Eye Muscle Area (size of the muscle/meat on the ribs as measured by ultrasound scanning). **LEANYeBV** - Lean Yield Breeding Value (a prediction of the total lean meat on a carcass measured by ultrasound scanning and by correlations with weight). **R-Index** - W12BV, MWTBV, CDeBV + CWeBV. **T-Index** - W12BV + CWeBV.

MFCF-14-250	DEERSelect BV 11/7/16	W12BV	WWTBV	MWTBV	CDeBV	CWeBV	EMAceBV	LEANYeBV	R-Index	T-Index
		28.81	20	19.7	-1.063	15.285	1.412	1.266	2497	5094
	Price	\$7,000								
	Weight (kgs)	Weaning	Yearling	12.07.2016	MFCF-14-250					
		66.5	129	152						
									Galileo	
									HUBBLE	
									MFCF-10-120	
									Bendigo	
									MFCF-12-395	
									MFCF-08-5	

MFCF-14-195	DEERSelect BV 11/7/16	W12BV	WWTBV	MWTBV	CDeBV	CWeBV	EMAceBV	LEANYeBV	R-Index	T-Index
		28.8	18.9	21.1	-1.593	15.425	1.212	1.26	2478	5148
	Price	\$7,000								
	Weight (kgs)	Weaning	Yearling	12.07.2016	MFCF-14-195					
		80	145.5	171						
									Bendigo	
									CROMWELL	
									MFCF-09-090	
									Lazio	
									MFCF-12-432	
									MFCF-10-142	

Key to DEERSelect values: **W12BV** - 12-month weight (yearling weight) breeding value. **WWTBV** - weaning weight breeding value. **MWTBV** - hind weight. **CDeBV** - conception date breeding value. **CWeBV** - carcass weight breeding value. **EMAceBV** - Eye Muscle Area (size of the muscle/meat on the ribs as measured by ultrasound scanning). **LEANYeBV** - Lean Yield Breeding Value (a prediction of the total lean meat on a carcass measured by ultrasound scanning and by correlations with weight). **R-Index** - W12BV, MWTBV, CDeBV + CWeBV. **T-Index** - W12BV + CWeBV.

MFCF-14-276	DEERSelect BV 11/7/16	W12BV	WWTBV	MWTBV	CDeBV	CWeBV	EMAceBV	LEANYeBV	R-Index	T-Index
		28.57	20.4	21.2	-2.753	14.985	0.97	0.982	2402	4951
	Price	\$7,000								
	Weight (kgs)	Weaning	Yearling	12.07.2016						
		67	128	149						
					MFCF-14-276		NASA	Gagarin		
								MFCF-09-065		
							MFCF-12-399	Naples		
								MFCF-10-140		

MFCF-14-349	DEERSelect BV 11/7/16	W12BV	WWTBV	MWTBV	CDeBV	CWeBV	EMAceBV	LEANYeBV	R-Index	T-Index
		27.93	18.9	21	-2.665	14.195	0.821	0.605	2225	4655
	Price	\$7,000								
	Weight (kgs)	Weaning	Yearling	12.07.2016						
		83.5	142	163.5						
					MFCF-14-349		THOMPSON	Bendigo		
								MFCF-08-5		
							MFCF-11-502	MFCF-09-188		
								MFCF-08-54		

Key to DEERSelect values: **W12BV** - 12-month weight (yearling weight) breeding value. **WWTBV** - weaning weight breeding value. **MWTBV** - hind weight. **CDeBV** - conception date breeding value. **CWeBV** - carcass weight breeding value. **EMAceBV** - Eye Muscle Area (size of the muscle/meat on the ribs as measured by ultrasound scanning). **LEANYeBV** - Lean Yield Breeding Value (a prediction of the total lean meat on a carcass measured by ultrasound scanning and by correlations with weight). **R-Index** - W12BV, MWTBV, CDeBV + CWeBV. **T-Index** - W12BV + CWeBV.

MFCF-14-254	DEERSelect BV 11/7/16	W12BV	WWTBV	MWTBV	CDeBV	CWeBV	EMAceBV	LEANYeBV	R-Index	T-Index
		27.91	17.9	19.7	-3.884	14.215	0.915	0.451	2328	4643
	Price	\$7,000								
	Weight (kgs)	Weaning	Yearling	12.07.2016						
		67	129.5	148.5						
					MFCF-14-254		GEMINI	Gagarin		
								MFCF-09-068		
							MFCF-12-453	Galileo		
								MFCF-10-120		

MFCF-14-175	DEERSelect BV 11/7/16	W12BV	WWTBV	MWTBV	CDeBV	CWeBV	EMAceBV	LEANYeBV	R-Index	T-Index
		27.86	16.5	19.8	-3.72	14.275	0.788	0.42	2324	4673
	Price	\$7,000								
	Weight (kgs)	Weaning	Yearling	12.07.2016						
		76	147	163.5						
					MFCF-14-175		PRADA	Lazio		
								MFCF-08-44		
							MFCF-12-452	Bendigo		
								MFCF-09-090		

Key to DEERSelect values: **W12BV** - 12-month weight (yearling weight) breeding value. **WWTBV** - weaning weight breeding value. **MWTBV** - hind weight. **CDeBV** - conception date breeding value. **CWeBV** - carcass weight breeding value. **EMAceBV** - Eye Muscle Area (size of the muscle/meat on the ribs as measured by ultrasound scanning). **LEANYeBV** - Lean Yield Breeding Value (a prediction of the total lean meat on a carcass measured by ultrasound scanning and by correlations with weight). **R-Index** - W12BV, MWTBV, CDeBV + CWeBV. **T-Index** - W12BV + CWeBV.

MFCF-14-379	DEERSelect BV 11/7/16	W12BV	WWTBV	MWTBV	CDeBV	CWeBV	EMAceBV	LEANYeBV	R-Index	T-Index	
		27.68	18.6	21	1.463	13.555	0.8	0.495	1858	4341	
	Price										
											\$5,000
	Weight (kgs)	Weaning	Yearling	12.07.2016	MFCF-14-379						
		63	130.5	150.5							
	<div><div>TUNDRA</div><div>MFCF-10-140</div><div>MFCF-08-39</div><div>Heineken</div><div>MFCF-08-5</div><div>Siberia</div></div>										

MFCF-14-176	DEERSelect BV 11/7/16	W12BV	WWTBV	MWTBV	CDeBV	CWeBV	EMAceBV	LEANYeBV	R-Index	T-Index
		27.42	15.8	20.3	-4.591	13.645	1.29	0.912	2221	4488
	Price									
	Weight (kgs)	Weaning	Yearling	12.07.2016	MFCF-14-176	PRADA	MFCF-12-419	Lazio		
		79.5	141.5	161						
									MFCF-08-44	
					Gagarin					
				MFCF-09-068						

Key to DEERSelect values: **W12BV** - 12-month weight (yearling weight) breeding value. **WWTBV** - weaning weight breeding value. **MWTBV** - hind weight. **CDeBV** - conception date breeding value. **CWeBV** - carcass weight breeding value. **EMAceBV** - Eye Muscle Area (size of the muscle/meat on the ribs as measured by ultrasound scanning). **LEANYeBV** - Lean Yield Breeding Value (a prediction of the total lean meat on a carcass measured by ultrasound scanning and by correlations with weight). **R-Index** - W12BV, MWTBV, CDeBV + CWeBV. **T-Index** - W12BV + CWeBV.

MFCF-14-318	DEERSelect BV 11/7/16	W12BV	WWTBV	MWTBV	CDeBV	CWeBV	EMAceBV	LEANYeBV	R-Index	T-Index
		27.35	15.5	18.9	-3.338	13.245	1.619	0.478	2122	4285
	Price	\$6,000								
	Weight (kgs)	Weaning	Yearling	12.07.2016	MFCF-14-318					
		66.5	138	157.5						
									DARWIN	Galileo
									MFCF-11-768	MFCF-10-120
										Berlin
										MFCF-09-015

MFCF-14-273	DEERSelect BV 11/7/16	W12BV	WWTBV	MWTBV	CDeBV	CWeBV	EMAceBV	LEANYeBV	R-Index	T-Index
		27.03	14.5	21.4	-1.334	13.025	0.626	-0.024	1845	4164
	Price	\$5,000								
	Weight (kgs)	Weaning	Yearling	12.07.2016	MFCF-14-273					
		53	121.5	152.5						
									BENNETON	Lazio
									MFCF-12-371	MFCF-10-236
										Bendigo
										MFCF-08-5

Key to DEERSelect values: **W12BV** - 12-month weight (yearling weight) breeding value. **WWTBV** - weaning weight breeding value. **MWTBV** - hind weight. **CDeBV** - conception date breeding value. **CWeBV** - carcass weight breeding value. **EMAceBV** - Eye Muscle Area (size of the muscle/meat on the ribs as measured by ultrasound scanning). **LEANYeBV** - Lean Yield Breeding Value (a prediction of the total lean meat on a carcass measured by ultrasound scanning and by correlations with weight). **R-Index** - W12BV, MWTBV, CDeBV + CWeBV. **T-Index** - W12BV + CWeBV.

MFCF-14-149

MFCF-14-158

Key to DEERSelect values: **W12BV** - 12-month weight (yearling weight) breeding value. **WWTBV** - weaning weight breeding value. **MWTBV** - hind weight. **CDeBV** - conception date breeding value. **CWeBV** - carcass weight breeding value. **EMAcEBV** - Eye Muscle Area (size of the muscle/meat on the ribs as measured by ultrasound scanning). **LEANyEBV** - Lean Yield Breeding Value (a prediction of the total lean meat on a carcass measured by ultrasound scanning and by correlations with weight). **R-Index** - W12BV, MWTBV, CDeBV + CWeBV. **T-Index** - W12BV + CWeBV.

MFCF-14-272

MFCF-14-145

Key to DEERSelect values: **W12BV** - 12-month weight (yearling weight) breeding value. **WWTBV** - weaning weight breeding value. **MWTBV** - hind weight. **CDeBV** - conception date breeding value. **CWeBV** - carcass weight breeding value. **EMAcEBV** - Eye Muscle Area (size of the muscle/meat on the ribs as measured by ultrasound scanning). **LEANyEBV** - Lean Yield Breeding Value (a prediction of the total lean meat on a carcass measured by ultrasound scanning and by correlations with weight). **R-Index** - W12BV, MWTBV, CDeBV + CWeBV. **T-Index** - W12BV + CWeBV.

MFCF-14-392	DEERSelect BV 11/7/16	W12BV	WWTBV	MWTBV	CDeBV	CWeBV	EMAceBV	LEANYeBV	R-Index	T-Index				
		26.2	17	19	-0.993	13.045	0.576	0.086	1932	4165				
	Price	\$6,000												
	Weight (kgs)	Weaning	Yearling	12.07.2016	MFCF-14-392									
		82	149.5	177										
											TUNDRA		Siberia	
											MFCF-10-404		MFCF-08-39	
							MFCF-08-664							
							MFCF-08-211							

MFCF-14-287	DEERSelect BV 11/7/16	W12BV	WWTBV	MWTBV	CDeBV	CWeBV	EMAceBV	LEANYeBV	R-Index	T-Index
		26.13	17.2	19.3	-3.289	13.495	1.316	1.105	2187	4462
	Price									
	Weight (kgs)	Weaning	Yearling	12.07.2016	MFCF-14-287	CAMPANIA	MFCF-10-022	Naples		
		70.5	136.5	164						
									MFCF-12-684	Siberia

Key to DEERSelect values: **W12BV** - 12-month weight (yearling weight) breeding value. **WWTBV** - weaning weight breeding value. **MWTBV** - hind weight. **CDeBV** - conception date breeding value. **CWeBV** - carcass weight breeding value. **EMAceBV** - Eye Muscle Area (size of the muscle/meat on the ribs as measured by ultrasound scanning). **LEANYeBV** - Lean Yield Breeding Value (a prediction of the total lean meat on a carcass measured by ultrasound scanning and by correlations with weight). **R-Index** - W12BV, MWTBV, CDeBV + CWeBV. **T-Index** - W12BV + CWeBV.

MFCF-14-141

MFCF-14-308

Key to DEERSelect values: **W12BV** - 12-month weight (yearling weight) breeding value. **WWTBV** - weaning weight breeding value. **MWTBV** - hind weight. **CDeBV** - conception date breeding value. **CWeBV** - carcass weight breeding value. **EMaCeBV** - Eye Muscle Area (size of the muscle/meat on the ribs as measured by ultrasound scanning). **LEANyEBV** - Lean Yield Breeding Value (a prediction of the total lean meat on a carcass measured by ultrasound scanning and by correlations with weight). **R-Index** - W12BV, MWTBV, CDeBV + CWeBV. **T-Index** - W12BV + CWeBV.

MFCF-14-190	DEERSelect BV 11/7/16	W12BV	WWTBV	MWTBV	CDeBV	CWeBV	EMAceBV	LEANYeBV	R-Index	T-Index											
		25.76	15.6	18.7	-3.485	13.065	-0.313	-0.889	2029	4130											
	Price																				
											\$6,000										
	Weight (kgs)	Weaning	Yearling	12.07.2016	MFCF-14-190																
		79.5	135.5	176.5																	
	PRADA										Lazio										
											MFCF-12-452										MFCF-08-44
																					Bendigo
											MFCF-09-090										

MFCF-14-322	DEERSelect BV 11/7/16	W12BV	WWTBV	MWTBV	CDeBV	CWeBV	EMAcBV	LEANYeBV	R-Index	T-Index		
		25.68	16.7	17.3	-3.764	12.715	0.961	0.089	2058	4067		
	Price	\$5,000										
	Weight (kgs)	Weaning	Yearling	12.07.2016	MFCF-14-322							
		75.5	143	166								
	MFCF-14-322										Galileo	
												DARWIN
											MFCF-11-787	
												MFCF-09-025

Key to DEERSelect values: **W12BV** - 12-month weight (yearling weight) breeding value. **WWTBV** - weaning weight breeding value. **MWTBV** - hind weight. **CDeBV** - conception date breeding value. **CWeBV** - carcass weight breeding value. **EMAceBV** - Eye Muscle Area (size of the muscle/meat on the ribs as measured by ultrasound scanning). **LEANYeBV** - Lean Yield Breeding Value (a prediction of the total lean meat on a carcass measured by ultrasound scanning and by correlations with weight). **R-Index** - W12BV, MWTBV, CDeBV + CWeBV. **T-Index** - W12BV + CWeBV.

MFCF-14-361	DEERSelect BV 11/7/16	W12BV	WWTBV	MWTBV	CDeBV	CWeBV	EMAceBV	LEANYeBV	R-Index	T-Index	
		25.37	17.3	17.6	-1.577	12.695	0.596	0.455	1964	4111	
	Price										
											\$5,000
	Weight (kgs)	Weaning	Yearling	12.07.2016	MFCF-14-361						
		74.5	137	160							
								TUNDRA	Siberia		
								MFCF-08-39			
							MFCF-08-635	Mastermind			
								MFCF-06-53			

MFCF-14-335	DEERSelect BV 11/7/16	W12BV	WWTBV	MWTBV	CDeBV	CWeBV	EMAceBV	LEANYeBV	R-Index	T-Index				
		25.22	14.7	17.3	-3.405	12.395	1.258	0.298	2002	3991				
	Price													
											\$4,000			
	Weight (kgs)	Weaning	Yearling	12.07.2016	MFCF-14-335									
		60.5	124	157										
	MFCF-14-335										Galileo			
											DARWIN		MFCF-10-120	
											MFCF-11-750		Berlin	
													MFCF-09-436	

Key to DEERSelect values: **W12BV** - 12-month weight (yearling weight) breeding value. **WWTBV** - weaning weight breeding value. **MWTBV** - hind weight. **CDeBV** - conception date breeding value. **CWeBV** - carcass weight breeding value. **EMAceBV** - Eye Muscle Area (size of the muscle/meat on the ribs as measured by ultrasound scanning). **LEANYeBV** - Lean Yield Breeding Value (a prediction of the total lean meat on a carcass measured by ultrasound scanning and by correlations with weight). **R-Index** - W12BV, MWTBV, CDeBV + CWeBV. **T-Index** - W12BV + CWeBV.

MFCF-14-268	DEERSelect BV 11/7/16	W12BV	WWTBV	MWTBV	CDeBV	CWeBV	EMAceBV	LEANYeBV	R-Index	T-Index
		25.09	15.4	19	-2.399	12.435	0.341	-0.063	1879	3994
	Price	\$4,000								
	Weight (kgs)	Weaning	Yearling	12.07.2016	MFCF-14-268 GEMINI MFCF-09-068 Naples MFCF-12-575 MFCF-08-636					
		58	128.5	154						

MFCF-14-266	DEERSelect BV 11/7/16	W12BV	WWTBV	MWTBV	CDeBV	CWeBV	EMAceBV	LEANYeBV	R-Index	T-Index
		25.09	15.4	18.9	-2.314	12.735	0.612	0.357	1971	4146
	Price	\$4,000								
	Weight (kgs)	Weaning	Yearling	12.07.2016	MFCF-14-266 SPUTNIK MFCF-09-068 Naples MFCF-12-637 MFCF-10-261					
		57	121.5	149						

Key to DEERSelect values: **W12BV** - 12-month weight (yearling weight) breeding value. **WWTBV** - weaning weight breeding value. **MWTBV** - hind weight. **CDeBV** - conception date breeding value. **CWeBV** - carcass weight breeding value. **EMAceBV** - Eye Muscle Area (size of the muscle/meat on the ribs as measured by ultrasound scanning). **LEANYeBV** - Lean Yield Breeding Value (a prediction of the total lean meat on a carcass measured by ultrasound scanning and by correlations with weight). **R-Index** - W12BV, MWTBV, CDeBV + CWeBV. **T-Index** - W12BV + CWeBV.

MFCF-14-404	DEERSelect BV 11/7/16	W12BV	WWTBV	MWTBV	CDeBV	CWeBV	EMAceBV	LEANYeBV	R-Index	T-Index
		25.07	17.8	18.6	2.109	12.485	0.72	0.863	1733	4055
	Price	\$4,000								
	Weight (kgs)	Weaning	Yearling	12.07.2016	MFCF-14-404					
		66.5	133	156						
									Siberia	
									TUNDRA	
									MFCF-10-291	MFCF-08-39
									Duke	
									MFCF-08-20	

MFCF-14-312	DEERSelect BV 11/7/16	W12BV	WWTBV	MWTBV	CDeBV	CWeBV	EMAceBV	LEANYeBV	R-Index	T-Index
		24.7	15.2	19.8	0.172	12.635	0.122	-0.041	1773	4061
	Price	\$5,000								
	Weight (kgs)	Weaning	Yearling	12.07.2016	MFCF-14-312					
		64.5	131.5	167.5						
									Gagarin	
									ATLANTIS	
									MFCF-11-677	MFCF-06-009
									Ivan	
									MFCF-08-23	

Key to DEERSelect values: **W12BV** - 12-month weight (yearling weight) breeding value. **WWTBV** - weaning weight breeding value. **MWTBV** - hind weight. **CDeBV** - conception date breeding value. **CWeBV** - carcass weight breeding value. **EMAceBV** - Eye Muscle Area (size of the muscle/meat on the ribs as measured by ultrasound scanning). **LEANYeBV** - Lean Yield Breeding Value (a prediction of the total lean meat on a carcass measured by ultrasound scanning and by correlations with weight). **R-Index** - W12BV, MWTBV, CDeBV + CWeBV. **T-Index** - W12BV + CWeBV.

MFCF-14-253	DEERSelect BV 11/7/16	W12BV	WWTBV	MWTBV	CDeBV	CWeBV	EMAceBV	LEANYeBV	R-Index	T-Index
		24.69	15.6	18.1	-4.233	12.635	0.918	0.728	2074	4139
	Price	\$4,000								
	Weight (kgs)	Weaning	Yearling	12.07.2016						
		63.5	125.5	153.5						
					MFCF-14-253		VOSTOK	Gagarin		
								MFCF-09-039		
							MFCF-12-606	Sicily		
								MFCF-10-414		

MFCF-14-244	DEERSelect BV 11/7/16	W12BV	WWTBV	MWTBV	CDeBV	CWeBV	EMAceBV	LEANYeBV	R-Index	T-Index
		24.61	12.4	19.4	-3.741	11.475	0.381	-0.556	1658	3586
	Price	\$4,000								
	Weight (kgs)	Weaning	Yearling	12.07.2016						
		56	130	152.5						
					MFCF-14-244		APOLLO	Gagarin		
								MFCF-09-039		
							MFCF-12-620	Sicily		
								MFCF-10-054		

Key to DEERSelect values: **W12BV** - 12-month weight (yearling weight) breeding value. **WWTBV** - weaning weight breeding value. **MWTBV** - hind weight. **CDeBV** - conception date breeding value. **CWeBV** - carcass weight breeding value. **EMAceBV** - Eye Muscle Area (size of the muscle/meat on the ribs as measured by ultrasound scanning). **LEANYeBV** - Lean Yield Breeding Value (a prediction of the total lean meat on a carcass measured by ultrasound scanning and by correlations with weight). **R-Index** - W12BV, MWTBV, CDeBV + CWeBV. **T-Index** - W12BV + CWeBV.

MFCF-14-261	DEERSelect BV 11/7/16	W12BV	WWTBV	MWTBV	CDeBV	CWeBV	EMAceBV	LEANYeBV	R-Index	T-Index
		24.5	16.2	18	-2.498	12.625	0.817	0.682	2003	4129
	Price	\$4,000								
	Weight (kgs)	Weaning	Yearling	12.07.2016	MFCF-14-261 EXPLORED MFCF-12-646					
		65.5	124.5	146						
	Gagarin									
	MFCF-09-039									
	Sicily									
	MFCF-10-036									

MFCF-14-093	DEERSelect BV 11/7/16	W12BV	WWTBV	MWTBV	CDeBV	CWeBV	EMAceBV	LEANYeBV	R-Index	T-Index
		24.41	13.1	17.7	-0.315	12.615	1.183	0.829	1961	4186
	Price	\$5,000								
	Weight (kgs)	Weaning	Yearling	12.07.2016	MFCF-14-093 CROMWELL MFCF-08-520					
		77	151	177						
	Bendigo									
	MFCF-09-090									
	MFCF-06-263									
	MFCF-LS05-921									

Key to DEERSelect values: **W12BV** - 12-month weight (yearling weight) breeding value. **WWTBV** - weaning weight breeding value. **MWTBV** - hind weight. **CDeBV** - conception date breeding value. **CWeBV** - carcass weight breeding value. **EMAceBV** - Eye Muscle Area (size of the muscle/meat on the ribs as measured by ultrasound scanning). **LEANYeBV** - Lean Yield Breeding Value (a prediction of the total lean meat on a carcass measured by ultrasound scanning and by correlations with weight). **R-Index** - W12BV, MWTBV, CDeBV + CWeBV. **T-Index** - W12BV + CWeBV.

MFCF-14-418	DEERSelect BV 11/7/16	W12BV	WWTBV	MWTBV	CDeBV	CWeBV	EMAceBV	LEANYeBV	R-Index	T-Index
		24.33	18.2	17.6	1.119	12.565	1.234	1.166	1893	4173
	Price	\$4,000								
	Weight (kgs)	Weaning	Yearling	12.07.2016	MFCF-14-418					
		69	130	159.5						
									Siberia	
									TUNDRA	
									MFCF-08-39	
									Commodore	
									MFCF-09-026	
									MFCF-07-21	

MFCF-14-310	DEERSelect BV 11/7/16	W12BV	WWTBV	MWTBV	CDeBV	CWeBV	EMAceBV	LEANYeBV	R-Index	T-Index
		24.04	16.3	16.1	-1.584	12.055	1.419	0.768	1970	3990
	Price	\$3,000								
	Weight (kgs)	Weaning	Yearling	12.07.2016	MFCF-14-310					
		69	121.5	150.5						
									Galileo	
									DARWIN	
									MFCF-10-120	
									Seamen	
									MFCF-11-791	
									MFCF-09-420	

Key to DEERSelect values: **W12BV** - 12-month weight (yearling weight) breeding value. **WWTBV** - weaning weight breeding value. **MWTBV** - hind weight. **CDeBV** - conception date breeding value. **CWeBV** - carcass weight breeding value. **EMAceBV** - Eye Muscle Area (size of the muscle/meat on the ribs as measured by ultrasound scanning). **LEANYeBV** - Lean Yield Breeding Value (a prediction of the total lean meat on a carcass measured by ultrasound scanning and by correlations with weight). **R-Index** - W12BV, MWTBV, CDeBV + CWeBV. **T-Index** - W12BV + CWeBV.

MFCF-14-366	DEERSelect BV 11/7/16	W12BV	WWTBV	MWTBV	CDeBV	CWeBV	EMAceBV	LEANYeBV	R-Index	T-Index	
		23.82	14.2	19.5	1.354	11.785	0.887	0.846	1579	3838	
	Price										
											\$3,000
	Weight (kgs)	Weaning	Yearling	12.07.2016	MFCF-14-366						
		54	126.5	159.5							
										Siberia	
										TUNDRA	
										MFCF-08-39	
										Temuka	
									MFCF-07-204		
									NZDF-03-9		

MFCF-14-395	DEERSelect BV 11/7/16	W12BV	WWTBV	MWTBV	CDeBV	CWeBV	EMAceBV	LEANYeBV	R-Index	T-Index	
		23.82	15.3	18.8	0.991	11.705	0.541	0.362	1591	3766	
	Price										
											\$3,000
	Weight (kgs)	Weaning	Yearling	12.07.2016	MFCF-14-395						
		66.5	134.5	155							
										Siberia	
										TUNDRA	
										MFCF-08-39	
										MFCF-06-263	
									MFCF-08-016		
									MFCF-06-56		

Key to DEERSelect values: **W12BV** - 12-month weight (yearling weight) breeding value. **WWTBV** - weaning weight breeding value. **MWTBV** - hind weight. **CDeBV** - conception date breeding value. **CWeBV** - carcass weight breeding value. **EMAceBV** - Eye Muscle Area (size of the muscle/meat on the ribs as measured by ultrasound scanning). **LEANYeBV** - Lean Yield Breeding Value (a prediction of the total lean meat on a carcass measured by ultrasound scanning and by correlations with weight). **R-Index** - W12BV, MWTBV, CDeBV + CWeBV. **T-Index** - W12BV + CWeBV.

MFCF-14-078	DEERSelect BV 11/7/16	W12BV	WWTBV	MWTBV	CDeBV	CWeBV	EMAceBV	LEANYeBV	R-Index	T-Index
		23.75	14	18.3	-2.2	11.085	0.704	0.233	1596	3537
	Price	\$4,000								
	Weight (kgs)	Weaning	Yearling	12.07.2016						
		74	134.5	168						
					MFCF-14-078		GEMINI	Gagarin		
								MFCF-09-068		
							MFCF-08-048	Stallone		
								MFCF-06-111		

MFCF-14-092	DEERSelect BV 11/7/16	W12BV	WWTBV	MWTBV	CDeBV	CWeBV	EMAceBV	LEANYeBV	R-Index	T-Index
		23.51	14.2	18.1	-2.021	11.825	0.145	-0.369	1753	3771
	Price	\$4,000								
	Weight (kgs)	Weaning	Yearling	12.07.2016						
		74.5	136	165.5						
					MFCF-14-092		BERETTA	Lazio		
								MFCF-10-135		
							MFCF-10-084	Bollard		
								MFCF-06-33		

Key to DEERSelect values: **W12BV** - 12-month weight (yearling weight) breeding value. **WWTBV** - weaning weight breeding value. **MWTBV** - hind weight. **CDeBV** - conception date breeding value. **CWeBV** - carcass weight breeding value. **EMAceBV** - Eye Muscle Area (size of the muscle/meat on the ribs as measured by ultrasound scanning). **LEANYeBV** - Lean Yield Breeding Value (a prediction of the total lean meat on a carcass measured by ultrasound scanning and by correlations with weight). **R-Index** - W12BV, MWTBV, CDeBV + CWeBV. **T-Index** - W12BV + CWeBV.

MFCF-14-384	DEERSelect BV 11/7/16	W12BV	WWTBV	MWTBV	CDeBV	CWeBV	EMAceBV	LEANYeBV	R-Index	T-Index
		23.07	17.1	18	-0.264	11.325	-0.098	-0.073	1559	3591
	Price	\$3,000								
	Weight (kgs)	Weaning	Yearling	12.07.2016	MFCF-14-384					
		78.5	136.5	159.5						
									Siberia	
									TUNDRA	
									MFCF-08-39	
									MFCF-09-036	
									Greenspan	
									MFCF-07-67	

MFCF-14-072	DEERSelect BV 11/7/16	W12BV	WWTBV	MWTBV	CDeBV	CWeBV	EMAceBV	LEANYeBV	R-Index	T-Index
		23.05	16.5	17.7	-0.263	12.155	0.834	0.464	1839	3998
	Price	\$5,000								
	Weight (kgs)	Weaning	Yearling	12.07.2016	MFCF-14-072					
		79	140	171.5						
									Ivan	
									NADAL	
									MFCF-09-090	
									MFCF-08-209	
									Commodore	
									DC-05-141	

Key to DEERSelect values: **W12BV** - 12-month weight (yearling weight) breeding value. **WWTBV** - weaning weight breeding value. **MWTBV** - hind weight. **CDeBV** - conception date breeding value. **CWeBV** - carcass weight breeding value. **EMAceBV** - Eye Muscle Area (size of the muscle/meat on the ribs as measured by ultrasound scanning). **LEANYeBV** - Lean Yield Breeding Value (a prediction of the total lean meat on a carcass measured by ultrasound scanning and by correlations with weight). **R-Index** - W12BV, MWTBV, CDeBV + CWeBV. **T-Index** - W12BV + CWeBV.

MFCF-14-155	DEERSelect BV 11/7/16	W12BV	WWTBV	MWTBV	CDeBV	CWeBV	EMAceBV	LEANYeBV	R-Index	T-Index	
		22.96	14.2	18.1	-1.164	11.685	1.055	0.677	1748	3823	
	Price	\$3,000									
	Weight (kgs)	Weaning	Yearling	12.07.2016	MFCF-14-155						
		63	121.5	155							
	<div><div>BERETTA</div><div>MFCF-10-135</div><div>MFCF-12-406</div><div>Gagarin</div><div>MFCF-09-039</div></div>										

MFCF-14-046	DEERSelect BV 11/7/16	W12BV	WWTBV	MWTBV	CDeBV	CWeBV	EMAceBV	LEANYeBV	R-Index	T-Index
		22.76	14.3	17.8	-1.939	10.735	2.782	2.203	1692	3674
	Price	\$4,000								
	Weight (kgs)	Weaning	Yearling	12.07.2016	MFCF-14-046	LILLYBANK	MFCF-10-259	Bendigo		
		79	141.5	170						
									MFCF-10-094	MFCF-08-98
					MFCF-06-165					

Key to DEERSelect values: **W12BV** - 12-month weight (yearling weight) breeding value. **WWTBV** - weaning weight breeding value. **MWTBV** - hind weight. **CDeBV** - conception date breeding value. **CWeBV** - carcass weight breeding value. **EMAceBV** - Eye Muscle Area (size of the muscle/meat on the ribs as measured by ultrasound scanning). **LEANYeBV** - Lean Yield Breeding Value (a prediction of the total lean meat on a carcass measured by ultrasound scanning and by correlations with weight). **R-Index** - W12BV, MWTBV, CDeBV + CWeBV. **T-Index** - W12BV + CWeBV.

MFCF-14-763	DEERSelect BV 11/7/16	W12BV	WWTBV	MWTBV	CDeBV	CWeBV	EMAceBV	LEANYeBV	R-Index	T-Index
		22.75	15.1	17.5	-0.224	11.325	0.504	0.048	1625	3637
	Price	\$3,000								
	Weight (kgs)	Weaning	Yearling	12.07.2016	MFCF-14-763					
		61.5	134	157						
									polaris	
									POLE STAR	
									MFCF-11-653	MFCF-09-600
									Naples	
									MFCF-08-206	

MFCF-14-060	DEERSelect BV 11/7/16	W12BV	WWTBV	MWTBV	CDeBV	CWeBV	EMAceBV	LEANYeBV	R-Index	T-Index
		22.42	13.5	16.3	0.905	11.255	0.158	-0.565	1590	3570
	Price	\$3,000								
	Weight (kgs)	Weaning	Yearling	12.07.2016	MFCF-14-060					
		73	136	155.5						
									Ivan	
									NADAL	
									MFCF-09-090	
									Franchise	
									MFCF-08-551	

Key to DEERSelect values: **W12BV** - 12-month weight (yearling weight) breeding value. **WWTBV** - weaning weight breeding value. **MWTBV** - hind weight. **CDeBV** - conception date breeding value. **CWeBV** - carcass weight breeding value. **EMAceBV** - Eye Muscle Area (size of the muscle/meat on the ribs as measured by ultrasound scanning). **LEANYeBV** - Lean Yield Breeding Value (a prediction of the total lean meat on a carcass measured by ultrasound scanning and by correlations with weight). **R-Index** - W12BV, MWTBV, CDeBV + CWeBV. **T-Index** - W12BV + CWeBV.

MFCF-14-005	DEERSelect BV 11/7/16	W12BV	WWTBV	MWTBV	CDeBV	CWeBV	EMAceBV	LEANYeBV	R-Index	T-Index
		22.19	14.4	17.5	-0.165	11.315	0.134	-0.154	1592	3603
	Price	\$3,000								
	Weight (kgs)	Weaning	Yearling	12.07.2016						
		76.5	129.5	154						
					MFCF-14-005		LILLYBANK	Bendigo		
								MFCF-10-259		
							MFCF-07-015	Temuka		
								MFCF-04-1140		

MFCF-14-321	DEERSelect BV 11/7/16	W12BV	WWTBV	MWTBV	CDeBV	CWeBV	EMAceBV	LEANYeBV	R-Index	T-Index
		22.14	18	15.3	-0.736	12.015	0.823	0.874	1961	4010
	Price	\$4,000								
	Weight (kgs)	Weaning	Yearling	12.07.2016						
		73	133	166.5						
					MFCF-14-321		NAPOLI	Naples		
								MFCF-10-136		
							MFCF-11-783	Munich		
								MFCF-09-026		

Key to DEERSelect values: **W12BV** - 12-month weight (yearling weight) breeding value. **WWTBV** - weaning weight breeding value. **MWTBV** - hind weight. **CDeBV** - conception date breeding value. **CWeBV** - carcass weight breeding value. **EMAceBV** - Eye Muscle Area (size of the muscle/meat on the ribs as measured by ultrasound scanning). **LEANYeBV** - Lean Yield Breeding Value (a prediction of the total lean meat on a carcass measured by ultrasound scanning and by correlations with weight). **R-Index** - W12BV, MWTBV, CDeBV + CWeBV. **T-Index** - W12BV + CWeBV.

MFCF-14-331	DEERSelect BV 11/7/16	W12BV	WWTBV	MWTBV	CDeBV	CWeBV	EMAceBV	LEANYeBV	R-Index	T-Index
		21.93	16	18	-1.768	10.875	0.855	0.763	1602	3560
	Price	\$4,000								
	Weight (kgs)	Weaning	Yearling	12.07.2016	MFCF-14-331					
		76	136	168.5						
									polaris	
									NORTH STAR	
									MFCF-09-036	
									MFCF-11-625	
									Naples	
									MFCF-08-20	

MFCF-14-134	DEERSelect BV 11/7/16	W12BV	WWTBV	MWTBV	CDeBV	CWeBV	EMAceBV	LEANYeBV	R-Index	T-Index
		21.73	15.3	15.8	-2.213	11.435	1.066	1.03	1867	3798
	Price	\$3,000								
	Weight (kgs)	Weaning	Yearling	12.07.2016	MFCF-14-134					
		78	132.5	157.5						
									Bendigo	
									LILLYBANK	
									MFCF-10-259	
									MFCF-10-098	
									Umbria	
									MFCF-06-47	

Key to DEERSelect values: **W12BV** - 12-month weight (yearling weight) breeding value. **WWTBV** - weaning weight breeding value. **MWTBV** - hind weight. **CDeBV** - conception date breeding value. **CWeBV** - carcass weight breeding value. **EMAceBV** - Eye Muscle Area (size of the muscle/meat on the ribs as measured by ultrasound scanning). **LEANYeBV** - Lean Yield Breeding Value (a prediction of the total lean meat on a carcass measured by ultrasound scanning and by correlations with weight). **R-Index** - W12BV, MWTBV, CDeBV + CWeBV. **T-Index** - W12BV + CWeBV.

MFCF-14-357	DEERSelect BV 11/7/16	W12BV	WWTBV	MWTBV	CDeBV	CWeBV	EMAceBV	LEANYeBV	R-Index	T-Index			
		21.72	14.4	16.8	-1.269	11.005	0.44	0.269	1630	3563			
	Price												
											\$3,000		
	Weight (kgs)	Weaning	Yearling	12.07.2016	MFCF-14-357	WANAKA	MFCF-09-090	Bendigo					
		68.5	129.5	160.5									
										Rocky			
									MFCF-08-29				

MFCF-14-351	DEERSelect BV 11/7/16	W12BV	WWTBV	MWTBV	CDeBV	CWeBV	EMAcBV	LEANYeBV	R-Index	T-Index
		21.72	13.9	16.6	0.479	11.315	0.107	-0.058	1642	3657
	Price									
	Weight (kgs)	Weaning	Yearling	12.07.2016	MFCF-14-351	PISA	MFCF-09-090	Bendigo		
		73	127.5	153						
								MFCF-11-732	Gagarin	
								MFCF-09-313		

Key to DEERSelect values: **W12BV** - 12-month weight (yearling weight) breeding value. **WWTBV** - weaning weight breeding value. **MWTBV** - hind weight. **CDeBV** - conception date breeding value. **CWeBV** - carcass weight breeding value. **EMAceBV** - Eye Muscle Area (size of the muscle/meat on the ribs as measured by ultrasound scanning). **LEANYeBV** - Lean Yield Breeding Value (a prediction of the total lean meat on a carcass measured by ultrasound scanning and by correlations with weight). **R-Index** - W12BV, MWTBV, CDeBV + CWeBV. **T-Index** - W12BV + CWeBV.

MFCF-14-296	DEERSelect BV 11/7/16	W12BV	WWTBV	MWTBV	CDeBV	CWeBV	EMAceBV	LEANYeBV	R-Index	T-Index
		21.7	13.9	18	1.57	10.705	0.085	-0.232	1391	3424
	Price	\$4,000								
	Weight (kgs)	Weaning	Yearling	12.07.2016						
		63	124	166						
					MFCF-14-296		PISA	Bendigo		
								MFCF-09-090		
							MFCF-11-790	Gagarin		
								MFCF-09-020		

MFCF-14-080	DEERSelect BV 11/7/16	W12BV	WWTBV	MWTBV	CDeBV	CWeBV	EMAceBV	LEANYeBV	R-Index	T-Index
		21.68	14.5	15.2	-3.116	11.435	-0.247	-0.426	1856	3671
	Price	\$3,000								
	Weight (kgs)	Weaning	Yearling	12.07.2016						
		77.5	130.5	160						
					MFCF-14-080		CROMWELL	Bendigo		
								MFCF-09-090		
							MFCF-08-062	Mastermind		
								MFCF-06-3122		

Key to DEERSelect values: **W12BV** - 12-month weight (yearling weight) breeding value. **WWTBV** - weaning weight breeding value. **MWTBV** - hind weight. **CDeBV** - conception date breeding value. **CWeBV** - carcass weight breeding value. **EMAceBV** - Eye Muscle Area (size of the muscle/meat on the ribs as measured by ultrasound scanning). **LEANYeBV** - Lean Yield Breeding Value (a prediction of the total lean meat on a carcass measured by ultrasound scanning and by correlations with weight). **R-Index** - W12BV, MWTBV, CDeBV + CWeBV. **T-Index** - W12BV + CWeBV.

MFCF-14-329	DEERSelect BV 11/7/16	W12BV	WWTBV	MWTBV	CDeBV	CWeBV	EMAceBV	LEANYeBV	R-Index	T-Index
		21.65	12.7	16.1	-3.291	10.425	1.095	0.511	1647	3392
	Price	\$3,000								
	Weight (kgs)	Weaning	Yearling	12.07.2016						
		67	134.5	163						

MFCF-14-329

FEYNMAN

MFCF-11-777

Galileo

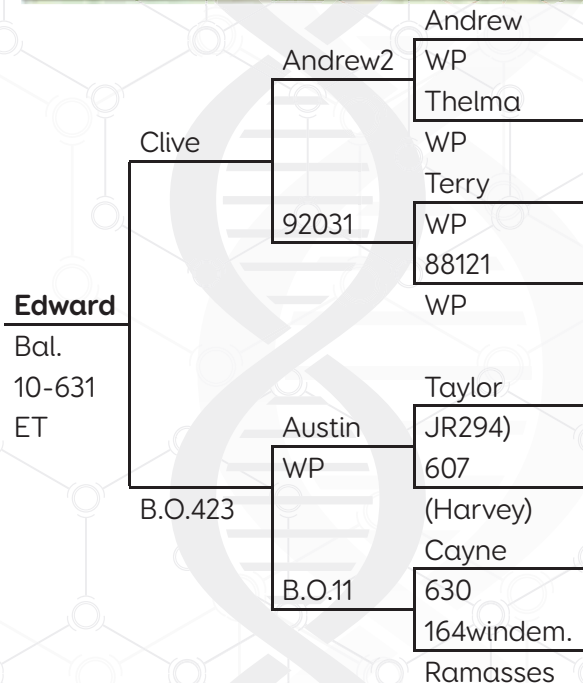
MFCF-10-417

Kremlin

MFCF-09-613



English Sire Information



HISTORY

Edward, our 100% English stag, was born at Balfour in 2010. Edward's sire, Clive, ranked second for growth on DEERSelect's English list in 2008, behind his son Toby, and was also a National Velvet Champion. His maternal grand sire, Austin, ranked third on the same list and was National Velvet champion several times.

Working with 2 Deer Industry stalwarts - Bill Oliver and Dave Bryant, Edward was developed by Deer Improvement as a new product line specifically for high country farmers as a result of feedback from our customers.

Bill provided us pure English hinds (with Austin as their sire) to use as donor hinds for our Embryo Transfer programme in 2008, while we purchased Clive semen from Dave to inseminate them with. Our 2010 Embryo Transfer programme, developed by Jake Chardon, Deer Improvement's geneticist, saw 1 hind inseminated with Clive semen. The hind produced 9 embryos that all survived, resulting in Edward, as well as 4 full sisters and 4 full brothers to him.

In March 2014, Deer Improvement ran a sexed semen programme. Fresh semen was collected from Edward at 5.30am, put on a plane in Queenstown, and delivered to Sexing Technologies in Hamilton for processing. At 6.30am the next day, 200 male straws flew back to Queenstown, and were delivered safely to Balfour Farm for AI that afternoon.

In November 2014, Edward was the number 1 ranking English stag in New Zealand on DEERSelect's, with a 12 month Breeding Value of 16.8 (3.8 above the next on the list).

Our high country customers have told us that mothering ability and hardiness (positive English traits) are extremely important for their farming environment, but typically English animals have much lower growth rates than Easterns. While Deer Improvement is focused on improving Eastern high growth rates for venison production, velvet is again becoming increasingly important in the New Zealand Deer Industry. With his high growth rates, Edward's sons will provide clients with the added sales appeal of his velvet genes. We also have a supply of Edward semen that can be purchased for AI.

VELVET

24.12.2012
cut 3.82kg

28.11.2013
cut 6.81kg. This was 1kg heavier than any other 2 year old stag that we cut that same year.

1.12.2014
cut 8.6kg. Edward's 3 year old velvet was graded Super A (the second highest grade), which paid \$130/kg.

7.12.2015
cut 9.82kg

Birth Herd	Birth Tag	Current Tag	Progeny	W12eBV	WWTeBV	MWTeBV	CDeBV	CWeBV	EMAceBV	R-Index	T-Index
Stanfield English	10048/10	CHURCHILL*	154	+19.0	+9.3	+12.8	-1.7	+9.1	1.42	\$14.44	\$29.63
Deer Improvement	10631/10	EDWARD	128/153	+18.5	+10.6	+9.9	0	+9.7	0.25	\$16.20	\$31.49
Peel Forest Estate	02077/02	JEFF*	148/216	+15.2	+7.3	+10.5	0.2	+7.3	0.46	\$9.88	\$22.31
Peel Forest Estate	072037/07	PEEL	130/218	+12.9	+8.8	+11.8	-7	+7.0	-0.82	\$12.57	\$22.99
Stanfield English	12194/12	2194/12	34	+12.7	+3.6	+7.3		+2.7		\$3.03	\$9.44
Pelorus Deer	9829/98	TOBY	94/622	+12.0	+10.1	+6.8	-3.9	+6.8	-1.08	\$12.80	\$21.95
Stanfield English	03254/03	DARTAGNION	14/199	+6.5	+3.4	+4.8	-1.7	+2.8	-0.15	\$4.18	\$8.58
Stanfield English	011440/01	ARAGORN	2/362	+5.7	+2.0	+2.7	-0.2	+3.6	-0.27	\$6.83	\$12.20
Stanfield English	97038/97	HOTSPUR	5/223	+1.8	+2.3	+1.3	2.2	+1.7		\$2.47	\$6.11
Pelorus Deer	9838/98	BIG MAC	54/199	+1.7	-1.7	+2.8		+0.7		\$0.12	\$1.87



Taken 5.11.2014



Taken 9.11.2014



Taken 19.11.2014



Taken 26.11.2014



English Stags sorted by 12 month BV

MFCF-14-124	DEERSelect BV 11/7/16	W12BV	WWTBV	MWTBV	CDeBV	CWeBV	EMAceBV	LEANYeBV	R-Index	T-Index
		23.32	13.2	15.2	-2.475	12.035	0.973	0.498	2018	3968
	Price	\$7,000								
	Weight (kgs)	Weaning	Yearling	12.07.2016	<div>MFCF-14-124 50% English</div>					
		77	153	173						
						EDWARD		Clive		
					MFCF-08-023		MFCF-04-423			
							Commodore			
							MFCF-06-117			

MFCF-14-013	DEERSelect BV 11/7/16	W12BV	WWTBV	MWTBV	CDeBV	CWeBV	EMAceBV	LEANYeBV	R-Index	T-Index	
		22.7	13.3	14.1	-3.329	11.585	0.362	0.006	1950	3740	
	Price	\$7,000									
	Weight (kgs)	Weaning	Yearling	12.07.2016	<div>MFCF-14-013 50% English</div>						
		78.5	134.5	184							
					<div>MFCF-09-321</div>		EDWARD				Clive
							MFCF-04-423				
							Umbria				
							MFCF-06-87				

MFCF-14-032	DEERSelect BV 11/7/16	W12BV	WWTBV	MWTBV	CDeBV	CWeBV	EMAceBV	LEANYeBV	R-Index	T-Index		
		22	12.8	14.4	-2.253	11.295	0.43	-0.056	1842	3644		
	Price	\$6,500								Clive		
	Weight (kgs)	Weaning	Yearling	12.07.2016	<div>MFCF-14-032 50% English</div>							
		74.5	144.5	167.5								
											EDWARD	
											MFCF-09-039	MFCF-04-423
											Tuscany	
											MFCF-07-70	

MFCF-14-118	DEERSelect BV 11/7/16	W12BV	WWTBV	MWTBV	CDeBV	CWeBV	EMAceBV	LEANYeBV	R-Index	T-Index	
		21.58	12.5	14.3	-1.663	10.915	0.493	0.198	1757	3546	
	Price	\$6,500									
	Weight (kgs)	Weaning	Yearling	12.07.2016	<div>MFCF-14-118 50% English</div>						
		71	142.5	162.5							
										EDWARD	Clive
											MFCF-04-423
										MFCF-10-417	Tolstoy
											MFCF-08-53

MFCF-14-003

DEERSelect BV 11/7/16	W12BV	WWTBV	MWTBV	CDeBV	CWeBV	EMAceBV	LEANYeBV	R-Index	T-Index					
	21.04	12.6	14.4	-3.23	10.455	0.232	-0.303	1680	3329					
Price	\$6,500													
Weight (kgs)	Weaning	Yearling	12.07.2016	<div>MFCF-14-003 50% English</div>										
	81	147.5	168											
				EDWARD		Clive								
				MFCF-09-018		MFCF-04-423								
						Umbria								
						MFCF-07-5								

MFCF-14-086	DEERSelect BV 11/7/16	W12BV	WWTBV	MWTBV	CDeBV	CWeBV	EMAceBV	LEANYeBV	R-Index	T-Index						
		20.85	11.1	14.2	-2.455	10.275	-0.167	-0.992	1580	3190						
	Price	\$6,500														
	Weight (kgs)	Weaning	Yearling	12.07.2016	<div>MFCF-14-086 50% English</div>											
		74	147.5	174.5												

EDWARD

MFCF-09-032

Clive

MFCF-04-423

Bollard

MFCF-07-34

MFCF-14-100	DEERSelect BV 11/7/16	W12BV	WWTBV	MWTBV	CDeBV	CWeBV	EMAceBV	LEANYeBV	R-Index	T-Index	
		20.81	13.4	13.5	-1.782	10.825	0.489	0.261	1788	3542	
	Price										
											\$6,500
	Weight (kgs)	Weaning	Yearling	12.07.2016	<div>MFCF-14-100 50% English</div>						
		74.5	139.5	170.5							
	<div>EDWARD</div> <div>MFCF-09-742</div>									Clive	
										MFCF-04-423	
										Umbria	

MFCF-14-121	DEERSelect BV 11/7/16	W12BV	WWTBV	MWTBV	CDeBV	CWeBV	EMAcBV	LEANYeBV	R-Index	T-Index				
		20.46	13.5	14	-0.093	10.635	0.578	0.456	1655	3477				
	Price													
											\$6,500			
	Weight (kgs)	Weaning	Yearling	12.07.2016	MFCF-14-121 50% English	EDWARD	MFCF-10-137	MFCF-04-423	Clive					
		71.5	133.5	173.5										

MFCF-14-004	DEERSelect BV 11/7/16	W12BV	WWTBV	MWTBV	CDeBV	CWeBV	EMAceBV	LEANYeBV	R-Index	T-Index	
		20.23	14.3	12.6	-1.274	11.005	0.608	0.535	1872	3654	
	Price	\$6,500									
	Weight (kgs)	Weaning	Yearling	12.07.2016							
		81	135.5	177.5							
					MFCF-14-004 50% English		EDWARD	Clive			
							MFCF-07-029	MFCF-04-423			
								Megamillion			
								MFCF-05-62			

MFCF-14-062	DEERSelect BV 11/7/16	W12BV	WWTBV	MWTBV	CDeBV	CWeBV	EMAceBV	LEANYeBV	R-Index	T-Index
		19.66	12.3	12.6	-1.757	10.355	0.18	-0.131	1704	3344
	Price	\$6,500								
	Weight (kgs)	Weaning	Yearling	12.07.2016	MFCF-14-062 50% English					
		74	141.5	175						
						EDWARD	Clive			
						MFCF-09-008	MFCF-04-423			
							Umbria			
							MFCF-07-36			

MFCF-14-130	DEERSelect BV 11/7/16	W12BV	WWTBV	MWTBV	CDeBV	CWeBV	EMAceBV	LEANYeBV	R-Index	T-Index
		20.01	11.6	14.8	-1.153	9.867	0.688	0.319	1481	3196
	Price	\$6,000								
	Weight (kgs)	Weaning	Yearling	12.07.2016	MFCF-14-130 50% English					
		69.5	134	168.5						
									Clive	
									EDWARD	
									MFCF-10-152	MFCF-04-423
									Siberia	
									MFCF-08-32	

MFCF-14-131	DEERSelect BV 11/7/16	W12BV	WWTBV	MWTBV	CDeBV	CWeBV	EMAceBV	LEANYeBV	R-Index	T-Index
		19.64	11.8	13.6	-1.101	9.952	0.369	0.32	1558	3240
	Price	\$6,000								
	Weight (kgs)	Weaning	Yearling	12.07.2016	MFCF-14-131 50% English					
		70.5	129.5	160						
									Clive	
									EDWARD	
									MFCF-09-436	MFCF-04-423
									Czar	
									MFCF-07-319	

Key to DEERSelect values: **W12BV** - 12-month weight (yearling weight) breeding value. **WWTBV** - weaning weight breeding value. **MWTBV** - hind weight. **CDeBV** - conception date breeding value. **CWeBV** - carcass weight breeding value. **EMAceBV** - Eye Muscle Area (size of the muscle/meat on the ribs as measured by ultrasound scanning). **LEANYeBV** - Lean Yield Breeding Value (a prediction of the total lean meat on a carcass measured by ultrasound scanning and by correlations with weight). **R-Index** - W12BV, MWTBV, CDeBV + CWeBV. **T-Index** - W12BV + CWeBV.

MFCF-14-058

DEERSelect BV 11/7/16	W12BV	WWTBV	MWTBV	CDeBV	CWeBV	EMAceBV	LEANYeBV	R-Index	T-Index
	19.6	12.2	14.5	-1.05	9.94	0.168	0.007	1495	3210
Price	\$6,000								
Weight (kgs)	Weaning	Yearling	12.07.2016	<div>MFCF-14-058 50% English</div>					
	74	132	165.5						
				EDWARD		Clive			
				MFCF-09-089		MFCF-04-423			
						Dubrovnik			
						MFCF-07-61			

MFCF-14-016

DEERSelect BV 11/7/16	W12BV	WWTBV	MWTBV	CDeBV	CWeBV	EMAceBV	LEANYeBV	R-Index	T-Index					
	19.57	12.3	13.6	-1.644	9.905	0.092	-0.095	1556	3199					
Price	\$6,000													
Weight (kgs)	Weaning	Yearling	12.07.2016	<div>MFCF-14-016 50% English</div>										
	82.5	138.5	169											
				EDWARD		Clive								
				MFCF-07-053		MFCF-04-423								
						Croatia								
						MFCF-05-222								

MFCF-14-099	DEERSelect BV 11/7/16	W12BV	WWTBV	MWTBV	CDeBV	CWeBV	EMAceBV	LEANYeBV	R-Index	T-Index	
		19.41	10.9	13.1	-0.289	9.941	0.67	0.191	1558	3246	
	Price	\$6,000									
	Weight (kgs)	Weaning	Yearling	12.07.2016	<div>MFCF-14-099 50% English</div>						
		69	135.5	168							
										EDWARD	Clive
											MFCF-04-423
										MFCF-08-206	Luciano
											MFCF-06-35

MFCF-14-108	DEERSelect BV 11/7/16	W12BV	WWTBV	MWTBV	CDeBV	CWeBV	EMAceBV	LEANYeBV	R-Index	T-Index		
		19.25	12.3	12.2	-1.424	9.932	0.412	0.151	1638	3245		
	Price	\$6,000								Clive		
	Weight (kgs)	Weaning	Yearling	12.07.2016	<div>MFCF-14-108 50% English</div>							
		78.5	142.5	176								
											EDWARD	
											MFCF-07-216	
											MFCF-04-423	
										Queenstown		
										MFCF-05-62		

MFCF-14-002

DEERSelect BV 11/7/16	W12BV	WWTBV	MWTBV	CDeBV	CWeBV	EMAceBV	LEANYeBV	R-Index	T-Index
	21.35	11	14.4	-0.827	10.565	0.184	-0.573	1597	3350
Price	\$5,500								
Weight (kgs)	Weaning	Yearling	12.07.2016	<div>MFCF-14-002 50% English</div>					
	60.5	125.5	155.5						
<div><div>EDWARD</div><div>MFCF-09-090</div></div> <div><div>Clive</div><div>MFCF-04-423</div><div>Tuscany</div><div>MFCF-07-29</div></div>									

MFCF-14-057

DEERSelect BV 11/7/16	W12BV	WWTBV	MWTBV	CDeBV	CWeBV	EMAceBV	LEANYeBV	R-Index	T-Index
	20.43	10.6	13.7	-0.163	9.689	0.223	-0.394	1416	3058
Price	\$5,500								
Weight (kgs)	Weaning	Yearling	12.07.2016	<div>MFCF-14-057 50% English</div>					
	67	134	157						
				EDWARD		Clive			
				MFCF-10-236		MFCF-04-423			
						Gagarin			

MFCF-14-010	DEERSelect BV 11/7/16	W12BV	WWTBV	MWTBV	CDeBV	CWeBV	EMAceBV	LEANYeBV	R-Index	T-Index
		19.01	13.6	12.8	-0.103	9.849	0.954	0.898	1555	3249
	Price	\$5,500								
	Weight (kgs)	Weaning	Yearling	12.07.2016	<div><div>MFCF-14-010 50% English</div><div>EDWARD</div><div>MFCF-10-144</div><div>Clive</div><div>MFCF-04-423</div><div>Siberia</div><div>MFCF-08-39</div></div>					
		73	129	159						

MFCF-14-098	DEERSelect BV 11/7/16	W12BV	WWTBV	MWTBV	CDeBV	CWeBV	EMAceBV	LEANYeBV	R-Index	T-Index
		18.93	11.6	11.9	-0.956	10.001	0.737	0.187	1668	3287
	Price	\$5,500								
	Weight (kgs)	Weaning	Yearling	12.07.2016	<div>MFCF-14-098 50% English</div>					
		69	130.5	158						
							EDWARD	Clive		
							MFCF-09-023	MFCF-04-423		
								Commodore		
								MFCF-07-21		

Key to DEERSelect values: **W12BV** - 12-month weight (yearling weight) breeding value. **WWTBV** - weaning weight breeding value. **MWTBV** - hind weight. **CDeBV** - conception date breeding value. **CWeBV** - carcass weight breeding value. **EMAceBV** - Eye Muscle Area (size of the muscle/meat on the ribs as measured by ultrasound scanning). **LEANYeBV** - Lean Yield Breeding Value (a prediction of the total lean meat on a carcass measured by ultrasound scanning and by correlations with weight). **R-Index** - W12BV, MWTBV, CDeBV + CWeBV. **T-Index** - W12BV + CWeBV.

MFCF-14-031	DEERSelect BV 11/7/16	W12BV	WWTBV	MWTBV	CDeBV	CWeBV	EMAceBV	LEANYeBV	R-Index	T-Index
		18.88	11.4	12.9	-1.342	9.872	0.185	0.27	1586	3229
	Price	\$5,500								
		Weight (kgs)	Weaning	Yearling	12.07.2016	MFCF-14-031 50% English	EDWARD	MFCF-04-423	Clive	
	72		135	171						
	MFCF-06-117	NZDF-03-113	Cossar							

MFCF-14-020	DEERSelect BV 11/7/16	W12BV	WWTBV	MWTBV	CDeBV	CWeBV	EMAceBV	LEANYeBV	R-Index	T-Index	
		18.75	11.4	11.9	-2.244	9.723	0.269	-0.153	1613	3126	
	Price	\$5,500									
	Weight (kgs)	Weaning	Yearling	12.07.2016	<div>MFCF-14-020 50% English</div>						
		72	136.5	166.5							
										EDWARD	Clive
											MFCF-04-423
										MFCF-07-068	Luciano
											MFCF-04-4383

MFCF-14-076	DEERSelect BV 11/7/16	W12BV	WWTBV	MWTBV	CDeBV	CWeBV	EMAceBV	LEANYeBV	R-Index	T-Index	
		18.6	11.5	12	-1.291	9.446	0.504	-0.038	1526	3052	
	Price	\$5,500									
	Weight (kgs)	Weaning	Yearling	12.07.2016	<div>MFCF-14-076 50% English</div>						
		67	131	163							
										Clive	
										EDWARD	
									MFCF-04-423		
									Tuscany		
									MFCF-09-041		
									MFCF-07-29		

Key to DEERSelect values: **W12BV** - 12-month weight (yearling weight) breeding value. **WWTBV** - weaning weight breeding value. **MWTBV** - hind weight. **CDeBV** - conception date breeding value. **CWeBV** - carcass weight breeding value. **EMAceBV** - Eye Muscle Area (size of the muscle/meat on the ribs as measured by ultrasound scanning). **LEANYeBV** - Lean Yield Breeding Value (a prediction of the total lean meat on a carcass measured by ultrasound scanning and by correlations with weight). **R-Index** - W12BV, MWTBV, CDeBV + CWeBV. **T-Index** - W12BV + CWeBV.

MFCF-14-017	DEERSelect BV 11/7/16	W12BV	WWTBV	MWTBV	CDeBV	CWeBV	EMAceBV	LEANYeBV	R-Index	T-Index
		18.58	10.4	13.9	-0.389	8.792	0.596	0.394	1268	2859
	Price	\$5,500								
	Weight (kgs)	Weaning	Yearling	12.07.2016	<div>MFCF-14-017 50% English</div>					
		69.5	133	162.5						
					EDWARD		Clive			
					MFCF-09-304		MFCF-04-423			
							Czar			
							MFCF-06-74			

MFCF-14-110	DEERSelect BV 11/7/16	W12BV	WWTBV	MWTBV	CDeBV	CWeBV	EMAceBV	LEANYeBV	R-Index	T-Index
		18.02	9.9	11.6	0.77	9.019	0.611	0.096	1381	2929
	Price	\$5,500								
	Weight (kgs)	Weaning	Yearling	12.07.2016	<div>MFCF-14-110 50% English</div>					
		70	142	177.5						
					EDWARD		Clive			
					MFCF-07-208		MFCF-04-423			
							Megamillion			
							MFCF-04-1726			

Key to DEERSelect values: **W12BV** - 12-month weight (yearling weight) breeding value. **WWTBV** - weaning weight breeding value. **MWTBV** - hind weight. **CDeBV** - conception date breeding value. **CWeBV** - carcass weight breeding value. **EMAceBV** - Eye Muscle Area (size of the muscle/meat on the ribs as measured by ultrasound scanning). **LEANYeBV** - Lean Yield Breeding Value (a prediction of the total lean meat on a carcass measured by ultrasound scanning and by correlations with weight). **R-Index** - W12BV, MWTBV, CDeBV + CWeBV. **T-Index** - W12BV + CWeBV.

MFCF-14-087	DEERSelect BV 11/7/16	W12BV	WWTBV	MWTBV	CDeBV	CWeBV	EMAceBV	LEANYeBV	R-Index	T-Index
		18.67	11.9	12.5	0.671	9.543	0.758	0.619	1468	3137
	Price	\$5,000								
	Weight (kgs)	Weaning	Yearling	12.07.2016	MFCF-14-087 50% English					
		75.5	126.5	158.5						
									Clive	
									EDWARD	
									MFCF-04-423	
									MFCF-10-202	
									Siberia	

MFCF-14-122	DEERSelect BV 11/7/16	W12BV	WWTBV	MWTBV	CDeBV	CWeBV	EMAceBV	LEANYeBV	R-Index	T-Index
		18.39	12.4	12.3	-1.041	9.832	0.294	0.328	1599	3236
	Price	\$5,000								
	Weight (kgs)	Weaning	Yearling	12.07.2016	MFCF-14-122 50% English					
		72.5	136	161.5						
									Clive	
									EDWARD	
									MFCF-04-423	
									MFCF-08-622	
									Corleone	
									MFCF-06-9	

Key to DEERSelect values: **W12BV** - 12-month weight (yearling weight) breeding value. **WWTBV** - weaning weight breeding value. **MWTBV** - hind weight. **CDeBV** - conception date breeding value. **CWeBV** - carcass weight breeding value. **EMAceBV** - Eye Muscle Area (size of the muscle/meat on the ribs as measured by ultrasound scanning). **LEANYeBV** - Lean Yield Breeding Value (a prediction of the total lean meat on a carcass measured by ultrasound scanning and by correlations with weight). **R-Index** - W12BV, MWTBV, CDeBV + CWeBV. **T-Index** - W12BV + CWeBV.

MFCF-14-103	DEERSelect BV 11/7/16	W12BV	WWTBV	MWTBV	CDeBV	CWeBV	EMAceBV	LEANYeBV	R-Index	T-Index	
		18.34	12	12.8	-3.157	9.554	0.616	0.522	1612	3147	
	Price										
											\$5,000
	Weight (kgs)	Weaning	Yearling	12.07.2016	MFCF-14-103 50% English						
		74	137	168.5							
										Clive	
											EDWARD
										MFCF-04-423	
										MFCF-09-061	Umbria
MFCF-07-5											

MFCF-14-088	DEERSelect BV 11/7/16	W12BV	WWTBV	MWTBV	CDeBV	CWeBV	EMAceBV	LEANYeBV	R-Index	T-Index
		18.32	11.5	12.6	-0.508	9.593	0.056	0.123	1496	3116
	Price									
	Weight (kgs)	Weaning	Yearling	12.07.2016	MFCF-14-088 50% English	EDWARD	MFCF-04-423			
		73.5	133	156						
								MFCF-07-434	MFCF-04-694	
					Clive					
				Cossar						

Key to DEERSelect values: **W12BV** - 12-month weight (yearling weight) breeding value. **WWTBV** - weaning weight breeding value. **MWTBV** - hind weight. **CDeBV** - conception date breeding value. **CWeBV** - carcass weight breeding value. **EMAceBV** - Eye Muscle Area (size of the muscle/meat on the ribs as measured by ultrasound scanning). **LEANYeBV** - Lean Yield Breeding Value (a prediction of the total lean meat on a carcass measured by ultrasound scanning and by correlations with weight). **R-Index** - W12BV, MWTBV, CDeBV + CWeBV. **T-Index** - W12BV + CWeBV.

MFCF-14-027

DEERSelect BV 11/7/16	W12BV	WWTBV	MWTBV	CDeBV	CWeBV	EMAceBV	LEANYeBV	R-Index	T-Index
	18.22	11.7	12.2	-1.246	9.476	-0.112	-0.215	1477	3017
Price	\$5,000								
Weight (kgs)	Weaning	Yearling	12.07.2016	<div>MFCF-14-027 50% English</div> <div>EDWARD</div> <div>MFCF-08-010</div> <div>MFCF-04-423</div> <div>MFCF-05-106</div> <div>Bremen</div> <div>Clive</div>					
	71.5	130	161						

MFCF-14-104	DEERSelect BV 11/7/16	W12BV	WWTBV	MWTBV	CDeBV	CWeBV	EMAceBV	LEANYeBV	R-Index	T-Index							
		18	12.1	12.7	-0.163	9.627	-0.076	-0.044	1479	3124							
	Price	\$5,000															
	Weight (kgs)	Weaning	Yearling	12.07.2016	<div><div><div>EDWARD</div><div>MFCF-04-423</div><div>MFCF-09-033</div><div>MFCF-07-59</div></div><div>MFCF-14-104 50% English</div><div>Clive</div><div>Bollard</div></div>												
		74.5	134.5	162.5													

MFCF-14-114	DEERSelect BV 11/7/16	W12BV	WWTBV	MWTBV	CDeBV	CWeBV	EMAceBV	LEANYeBV	R-Index	T-Index	
		17.89	10.4	11.1	-1.551	9.131	0.472	0.053	1488	2934	
	Price	\$4,500									
	Weight (kgs)	Weaning	Yearling	12.07.2016	<div><div>MFCF-14-114 50% English</div><div>EDWARD</div><div>MFCF-10-041</div></div> <div><div>Clive</div><div>MFCF-04-423</div><div>Munich</div><div>MFCF-07-31</div></div>						
		63	135.5	164							

MFCF-14-079	DEERSelect BV 11/7/16	W12BV	WWTBV	MWTBV	CDeBV	CWeBV	EMAcBV	LEANYeBV	R-Index	T-Index
		17.87	10.5	12	0.582	9.279	0.225	-0.038	1413	3000
	Price									
	Weight (kgs)	Weaning	Yearling	12.07.2016	MFCF-14-079 50% English	EDWARD	MFCF-09-003	MFCF-04-423	Umbria	MFCF-07-225
		65	129	156						

MFCF-14-043

DEERSelect BV 11/7/16	W12BV	WWTBV	MWTBV	CDeBV	CWeBV	EMAceBV	LEANYeBV	R-Index	T-Index
	17.84	9.6	13.7	-0.5	8.613	0.312	0.231	1233	2790
Price	\$4,500								Clive
Weight (kgs)	Weaning	Yearling	12.07.2016	MFCF-14-043 50% English	EDWARD	MFCF-09-429	MFCF-04-423		
	60.5	124	160.5				Czar		
							MFCF-07-66		

MFCF-14-082

DEERSelect BV 11/7/16	W12BV	WWTBV	MWTBV	CDeBV	CWeBV	EMAcBV	LEANYeBV	R-Index	T-Index			
	17.82	9	13	-0.586	8.678	-0.19	-0.547	1250	2747			
Price	\$4,500											
Weight (kgs)	Weaning	Yearling	12.07.2016	MFCF-14-082 50% English	EDWARD	MFCF-07-066	MFCF-04-423	Clive				
	67	122	160.5									
								Colossus				
								NZDF-03-113				

MFCF-14-007	DEERSelect BV 11/7/16	W12BV	WWTBV	MWTBV	CDeBV	CWeBV	EMAceBV	LEANYeBV	R-Index	T-Index
		17.8	12	10.7	-2.73	9.368	0.491	0.251	1644	3079
	Price	\$4,500								
	Weight (kgs)	Weaning	Yearling	12.07.2016						
		76.5	132	166.5						
						MFCF-14-007 50% English				
								EDWARD		Clive
					MFCF-08-707		MFCF-04-423			
							Mastermind			
							MFCF-06-3233			

MFCF-14-111	DEERSelect BV 11/7/16	W12BV	WWTBV	MWTBV	CDeBV	CWeBV	EMAceBV	LEANYeBV	R-Index	T-Index
		17.63	11.1	12.9	-0.657	9.258	-0.057	-0.079	1413	3002
	Price	\$4,500								
	Weight (kgs)	Weaning	Yearling	12.07.2016	MFCF-14-111 50% English					
		74	136	160.5						
									Clive	
									EDWARD	
									MFCF-04-423	
									MFCF-07-214	
									Temuka	
									NZDF-03-9	

MFCF-14-129	DEERSelect BV 11/7/16	W12BV	WWTBV	MWTBV	CDeBV	CWeBV	EMAceBV	LEANYeBV	R-Index	T-Index
		17.55	11.7	13	0.035	9.32	0.559	0.823	1428	3100
	Price	\$4,500								
	Weight (kgs)	Weaning	Yearling	12.07.2016	MFCF-14-129 50% English					
		69	129	174.5						
									Clive	
									EDWARD	
									MFCF-04-423	
									MFCF-10-047	
									Dresden	
									MFCF-07-3	

Key to DEERSelect values: **W12BV** - 12-month weight (yearling weight) breeding value. **WWTBV** - weaning weight breeding value. **MWTBV** - hind weight. **CDeBV** - conception date breeding value. **CWeBV** - carcass weight breeding value. **EMAceBV** - Eye Muscle Area (size of the muscle/meat on the ribs as measured by ultrasound scanning). **LEANYeBV** - Lean Yield Breeding Value (a prediction of the total lean meat on a carcass measured by ultrasound scanning and by correlations with weight). **R-Index** - W12BV, MWTBV, CDeBV + CWeBV. **T-Index** - W12BV + CWeBV.

MFCF-14-096	DEERSelect BV 11/7/16	W12BV	WWTBV	MWTBV	CDeBV	CWeBV	EMAceBV	LEANYeBV	R-Index	T-Index	
		17.18	11	10.5	-1.48	8.707	0.028	-0.334	1425	2792	
	Price	\$4,000									
	Weight (kgs)	Weaning	Yearling	12.07.2016							
		74.5	135.5	160							
						MFCF-14-096 50% English		EDWARD	Clive		
									MFCF-04-423		
								MFCF-08-704	Corleone		
									MFCF-06-85		

MFCF-14-049	DEERSelect BV 11/7/16	W12BV	WWTBV	MWTBV	CDeBV	CWeBV	EMAceBV	LEANYeBV	R-Index	T-Index
		17.12	10.7	10.2	-0.627	9.053	0.477	0.199	1499	2944
	Price	\$3,500								
	Weight (kgs)	Weaning	Yearling	12.07.2016						
		63.5	123.5	154						
						MFCF-14-049 50% English		EDWARD	Clive	
								MFCF-04-423		
								MFCF-10-066	Berlin	
								MFCF-07-225		

Key to DEERSelect values: **W12BV** - 12-month weight (yearling weight) breeding value. **WWTBV** - weaning weight breeding value. **MWTBV** - hind weight. **CDeBV** - conception date breeding value. **CWeBV** - carcass weight breeding value. **EMAceBV** - Eye Muscle Area (size of the muscle/meat on the ribs as measured by ultrasound scanning). **LEANYeBV** - Lean Yield Breeding Value (a prediction of the total lean meat on a carcass measured by ultrasound scanning and by correlations with weight). **R-Index** - W12BV, MWTBV, CDeBV + CWeBV. **T-Index** - W12BV + CWeBV.

MFCF-14-054	DEERSelect BV 11/7/16	W12BV	WWTBV	MWTBV	CDeBV	CWeBV	EMAceBV	LEANYeBV	R-Index	T-Index	
		17.03	10.8	11.2	-1.129	8.562	0.325	0.039	1356	2761	
	Price										
											\$3,500
	Weight (kgs)	Weaning	Yearling	12.07.2016	<div><div>MFCF-14-054 50% English</div><div>EDWARD</div><div>MFCF-04-423</div><div>MFCF-08-113</div><div>MFCF-10-409</div><div>MFCF-08-54</div><div>Clive</div></div>						
		67	124.5	158							

MFCF-14-006	DEERSelect BV 11/7/16	W12BV	WWTBV	MWTBV	CDeBV	CWeBV	EMAceBV	LEANYeBV	R-Index	T-Index	
		16.94	10.9	11.6	0.02	8.805	0.356	0.061	1368	2874	
	Price	\$3,500								Clive	
	Weight (kgs)	Weaning	Yearling	12.07.2016	MFCF-14-006 50% English				EDWARD		
		69	130.5	158							
											MFCF-04-423
											Luciano
											MFCF-08-219
										MFCF-06-35	

Key to DEERSelect values: **W12BV** - 12-month weight (yearling weight) breeding value. **WWTBV** - weaning weight breeding value. **MWTBV** - hind weight. **CDeBV** - conception date breeding value. **CWeBV** - carcass weight breeding value. **EMAceBV** - Eye Muscle Area (size of the muscle/meat on the ribs as measured by ultrasound scanning). **LEANYeBV** - Lean Yield Breeding Value (a prediction of the total lean meat on a carcass measured by ultrasound scanning and by correlations with weight). **R-Index** - W12BV, MWTBV, CDeBV + CWeBV. **T-Index** - W12BV + CWeBV.

MFCF-14-120	DEERSelect BV 11/7/16	W12BV	WWTBV	MWTBV	CDeBV	CWeBV	EMAceBV	LEANYeBV	R-Index	T-Index
		16.91	10.8	11.6	-0.44	8.912	0.171	0.063	1398	2899
	Price	\$3,500								
	Weight (kgs)	Weaning	Yearling	12.07.2016	MFCF-14-120 50% English					
		66.5	125.5	167.5						
									Clive	
									EDWARD	
									MFCF-04-423	
									MFCF-09-067	
									Umbria	
									MFCF-07-23	

MFCF-14-116	DEERSelect BV 11/7/16	W12BV	WWTBV	MWTBV	CDeBV	CWeBV	EMAceBV	LEANYeBV	R-Index	T-Index
		16.32	11.5	11.2	-0.757	8.611	-0.294	-0.446	1332	2737
	Price	\$3,500								
	Weight (kgs)	Weaning	Yearling	12.07.2016	MFCF-14-116 50% English					
		75	126.5	154						
									Clive	
									EDWARD	
									MFCF-04-423	
									MFCF-09-017	
									Dubrovnik	
									MFCF-07-12	

MFCF-14-107	DEERSelect BV 11/7/16	W12BV	WWTBV	MWTBV	CDeBV	CWeBV	EMAceBV	LEANYeBV	R-Index	T-Index	
		15.59	9.4	8.4	0.523	7.751	0.076	-0.365	1208	2435	
	Price	\$3,500									
	Weight (kgs)	Weaning	Yearling	12.07.2016	<div>MFCF-14-107 50% English</div>						
		67	125.5	150							
										EDWARD	Clive
											MFCF-04-423
										MFCF-08-304	Stallone
											MFCF-LS03-523

MFCF-14-014	DEERSelect BV 11/7/16	W12BV	WWTBV	MWTBV	CDeBV	CWeBV	EMAceBV	LEANYeBV	R-Index	T-Index	
		15.23	9.3	9.9	-0.925	7.927	0.408	0.139	1275	2556	
	Price	\$3,500									
	Weight (kgs)	Weaning	Yearling	12.07.2016	<div>MFCF-14-014 50% English</div>						
		66	126	153.5							
										EDWARD	Clive
										MFCF-10-021	MFCF-04-423
										Dresden	
										MFCF-07-19	



Don't get left behind.



Contact Bruce McGregor
Phone: 027 233 2063
Email: bmcgregor@deerimprovement.co.nz