



PEEL FOREST  
ESTATE  
RED DEER GENETICS



# Velvet & Trophy Sire Sale Catalogue

Tuesday 6th January 2015  
Viewing at 12pm, Auction 1pm

PEEL FOREST ESTATE  
1 BRAKE ROAD, RD 22, GERALDINE 7992  
NEW ZEALAND  
(027) 439 3418 / 0800 DEER4U  
steve@peelforestestate.com

[www.peelforestdeergenetics.com](http://www.peelforestdeergenetics.com)



# STEVE'S COMMENTS



Welcome to the Peel Forest Velvet and Trophy sale.

This is the first year we offer the world renowned Windermere Warnham and Warnham Woburn cross stags. The line-up of 2 year old Sires is dominated by the highly potent Sire Walton. His ability to leave sons so very similar to himself is true testament of a powerfully potent bloodline that will breed on in his progeny.

The 2yr Windermere's are very easy doing and quiet young stags which is so very important in breeding good velvet.

The 3 year old Sires are a cross section of the Sires used here at the stud. They offer the buyer the opportunity to select new or different bloodlines.

We have chosen stags that have good beam along with trophy style. It's an important trait as our stags are cut many times before they are grown out for safari.

As always, we stand behind the stags we sell and are keen to hear how they perform for you.

Please contact me if you require any further information on any of the stags for sale.

Regards,

Steve Blanchard

# JOHNE'S RESILIENCE

## GROUND BREAKING JOHNE'S RESEARCH AT PEEL FOREST ESTATE

The annual cost of Johne's disease to the New Zealand deer industry in 2011 was estimated at least \$8.8 million. Even more importantly, the cost of Johne's disease on farms with heavily affected deer herds can be huge, ruining the profitability of your deer unit.

For the last ten years Peel Forest Estate has made a serious commitment to breeding Johne's Resilient deer on the property and is leading the way with an industry breaking research project with Dr Frank Griffin, Head of Microbiology at the University of Otago.

There have been huge gains in the research by not only reducing the presence of Susceptible animals but more importantly identifying Resilient bloodlines. This breakthrough is even more important due to the fact Colin Mackintosh from Agresearch has identified the powerful heritability of either Susceptibility or Resilience to Johne's in deer. The heritability of the Johne's resilient trait ensures the ability of Peel Forest Estate stags to fight the disease on our client's properties.

In Colin Mackintosh's paper following his trial on heritability he comments "the offspring of the S (Susceptible) sire was significantly more severely affected than those of the R (Resilient) sire. Most of the Resistant, but not the Susceptible, showed evidence of resolving lesions and a reduction in M.A.P (Johne's) after challenge". The paper went on to say "the 5 male offspring gained significantly more weight than the 9 S offspring over the 49 week study (70.3kg versus 59.8kg) despite being 2.8kg lighter at the start". This difference was statistically significant and even more significant because the S sire had a higher breeding value for 12 month weight.

Further to this research Peel Forest Estate are now going to look into the possible improvements to meat yield and quality from progeny with Johne's resilience as well as the proven on farm productivity benefits.

All stock at Peel Forest Estate are continually challenged by Johne's which has resulted in a radical test-cull, natural and genetic selection for Johne's resilience. The heritability of the Johne's resilient trait ensures their ability to fight the disease on your property.



# SIRE STAG CARE AND MANAGEMENT

Sires are the most valuable animal in the deer herd. They carry the genetics that will determine the future production of your herd. The welfare and 12 month health programme cannot be compromised if you wish to get the best from your sires.

## ON ARRIVAL

Stress is at a high level when your new stag arrive at your property. He has left familiar surroundings and mates he has lived with in a social group of around 40 animals of the same age. His arrival can be made a lot less stressful if you follow a few simple rules.

1. Your stag should arrive as early as possible to settle in (preferably before February)
2. Having a few animals in the yard when the stag is unloaded is important.

He should be introduced to a small group of similar age (10-15 animals). Never put with older stags or spikers. Ideally if the hinds he was to mate were nearby he could go directly into the mob. Early fawns should always be the aim.

## THE ROAR

A 3 year old stag will mate 40-50 hinds comfortably if he does not have to travel too far or has no competing stag nearby. When you put your stag out is your choice (the earlier the better) but be aware it can take 5-10 days to be accepted into the mob before he begins mating.

It is possible to mate far more hinds than this but you risk a greater spread over calving and marked loss in body weight and performance in a young stag.

When the stags are taken out of the hinds minimize fighting by preparing a safe paddock (with plenty of feed, shade and water) by taking the most dominant stag (older) first. Avoid a very hot day.

Do not put stags used for mating with ones that have not been as this can cause excessive fighting.

## ANIMAL HEALTH

Your stag will have been drenched and coppered before leaving Peel Forest Estate.

As soon as the sires have settled down after the roar it is good practice to give them a drench, copper and a mineral booster. Hemo 15 is one option. This should be done no later than the end of May. He is at his most vulnerable state and parasites need to be addressed as soon as possible after the roar.

# CONDITIONS FOR SALE

Sale will be conducted in accordance with conditions of sale as set down by South Canterbury Stock and Station Agent's Association, copy of which is exhibited at sale venue, and other terms set out in this catalogue.

Deer will be offered as catalogued, subject only to final draft.

Intending purchasers are required to register at the office prior to commencement of sale to obtain buyer's number and advise appropriate stock and station agent.

Each lot shall become the property and responsibility of the purchaser on the fall of the hammer.

Terms are strictly cash unless prior arrangements are made with one of the selling agents.

Sale will be conducted GST exclusive.

Purchaser must give complete delivery instructions to the office, using one of the delivery instruction sheets in the back of this catalogue and receive delivery docket before removing animals.

The vendor will offer a commission of 5% to non-participating companies. Notice should be given in writing to the vendor 24 hours before the commencement of sale.

## **SPECIAL CONDITIONS**

No animals, embryos or semen sold by Peel Forest Estate or their germplasm, any subsequent progeny or germplasm, including the semen and germplasm of that progeny, may be supplied to any third party without the written permission of Peel Forest Estate.

This condition does not affect normal commercial deer farming or stud farming or their normal sales of semen or embryos as it only applies to entities with the primary function of commercial semen/germplasm activity.

It is a condition of sale of any animals, embryos, or germplasm or semen sold by Peel Forest Estate, that the purchaser agrees to include the following clause as a condition of any subsequent sale or gift of any animal, embryo, semen, germplasm or subsequent progeny or germplasm to a third party—"the purchaser acknowledges that it will not supply any animals, embryos, semen or germplasm to any commercial semen/germplasm marketing or sales entity, and will ensure that this clause is inserted as a condition of any sale or gift of any animals, embryos, semen or germplasm".

## **SALE**

Animals will be penned by 11.30a.m. on the day of the sale. All stags will be velveted which will remain the property of Peel Forest Estate.

## **CERTIFICATES**

Certificate copies of TB accredited free status, Johnes Clear Test and pedigree will be provided to the purchaser and are available for inspection by all potential clients.

## **GENERAL INSURANCE**

Insurance facilities will be available at the office.

## **HERD HEALTH STATUS**

Peel Forest Estate has completed a re-accreditation TB whole herd test. We have a C10 plus status. All stags have received a veterinarian physical testicular examination.

## **GUARANTEE**

Should a stag prove to be infertile from natural causes it will be replaced. In all events the Seller will not be held responsible for loss of production or consequential losses on any animal sold. Notification of any dissatisfaction must be made within 12 months of the date of sale. Subject to these terms, the vendor makes no warranty about any animal sold.

## **DISCLAIMER**

While these details are prepared with the greatest of care Peel Forest Estate accept no responsibilities for omissions and missed descriptions.

# USING DEERSELECT DBVS

## WHAT IS DEERSELECT?

DEER Select is the genetic evaluation system for the deer industry. DEERSelect can assist you in your purchase by providing an indication of the relative progeny performance of each stag. DEERSelect is a simple system to use. Each animal has an individual "Breeding Value" (or BV) for certain traits which are related to economic profitability. By comparing BVs between animals, you can assess the relative merits of animals for different traits.

## WHAT DO I LOOK FOR?

The first question is whether the DEERSelect analysis on the herd you are considering purchasing from is across-herd or within-herd. If across-herd, then the BVs are comparable to those from other herds participating in across-herd analysis. Within-herd BVs apply only to comparisons between animals in the one herd, and cannot be compared between two different herds.

## WHAT DO THE DIFFERENT BVs MEAN?

BVs are available for growth and antler traits (the system will be expanded over time to consider other economically important traits). The traits reported are:

**12-month weight (W12BV)** - This compares the weight of animals in spring i.e. the critical time for venison production. The values are expressed in kg of liveweight. For venison production, this is the trait deer farmers are paid on so should receive significant emphasis if purchasing genetics for venison.

**Mature weight (MWTBV)** – This compares the mature weight of hinds (i.e. 3+ years). Again, the values are expressed in kg liveweight. This trait is economically important for both venison and velvet production, as it is an indicator of how much feed is required to maintain an adult animal. Although it is expressed on a breeding hind basis, it is closely related to mature weight of adult stags as well.

Those seeking specialist velvet production genetics should look for low or moderate mature weight, combined with excellent velvet genetics. This will maximise the profit per hectare of your velvet enterprise by producing more velvet per stag and running stags at higher stocking rates. For venison production, mature weight is somewhat correlated with 12-month weight. This means that if genetics are sought to breed replacement hinds, 12-month weight needs to be balanced with the mature weight to keep hind size (and hence feed costs) at an appropriate level. There may be considerations with handling ability too, depending on your individual preference. Mature weight is not economically important for terminal sires (concentrate on 12-month weight).

**Mature Velvet Weight (MVWBV)** – This compares the weight of velvet produced by a mature velvet stag – values are expressed as kg of velvet cut at optimal time. The MVWBV is a significant driver of velvet profitability and should be considered along with likely impacts on velvet grade when comparing animals.

## HOW DO BVs RELATE TO PERFORMANCE?

BVs are expressed in actual units of production (kg of liveweight or velvet), so are directly related to expected impacts on performance. An animal passes on half of its genes to its offspring (the other half come from the other parent). So if we take an example of 2 stags, one with a 12-month weight EBV of +12 kg and the other of +8 kg, and mate them to the same group of hinds, the first stag will pass on an impact of +6 kg to his offspring, while the second will pass on +4 kg. Thus we would expect the offspring of the +12 stag to be 2 kg heavier at 12 months of age than those of the +8 stag (i.e. half of the difference in breeding value).

## WHAT DO ACCURACIES MEAN?

BVs are always an estimate – we can never know the true breeding value of an animal. However, the more information we have the more confident we are that the BV we calculate is accurate and close to the true breeding value. The accuracy figure is an indication of how confident we are in the accuracy of the estimated BV. BVs with accuracies of 80% + are excellent indications of true breeding value, but adding more information may cause some changes in breeding value estimates. BVs with accuracies less than 60% are approximate indicators of breeding value, and may change significantly with additional information. To make maximum genetic progress, selection decisions should be based on the BV itself, not its accuracy. A higher BV, even with lower accuracy, will, on average, give greater genetic progress.

## NOTE FROM DEERSelect - DEC 2010

In October a correction was made to the DEERSelect system to rectify an issue identified. This has resulted in the overall BVs for the leading stags decreasing by approximately 2 kg. Across the entire recorded deer population the correlation between the previous BVs and the corrected BVs is 98%, indicating that for the vast majority of animals the re-ranking is minor. The top tier of stags remains in the top tier and selection and purchase decisions would largely remain unchanged. Any re-ranking that has occurred is in no way the fault of the breeders concerned. We are currently working on opportunities to significantly expand the DEERSelect system to encompass a wider range of traits in order to better describe the full range of performance parameters that influence commercial profitability of venison production systems. In the longer term this will also contribute towards the exciting potential for genomic BVs, following on from the milestones achieved earlier this year in producing the first DNA sequence for the red deer genome. But before we achieve this long term goal, there will be significant shorter term benefits from the work to better identify the best stags for industry based on a number of important production characteristics. - Jason Archer, DEERSelect Manager

# AGENTS

Brian Newall ..... PGGW ..... 027 595 6448  
Graham Kinsman ..... PGGW ..... 027 422 3154  
Ron Schroeder ..... PGGW ..... 027 432 1299  
John Williams ..... PGGW ..... 027 241 4179  
Brian Duggan ..... PGGW ..... 027 432 4212  
Alf Kinzett ..... CRT ..... 027 241 8919  
Max Bensemann ..... PWA ..... 027 561 0000





# Sire References



PEEL FOREST  
ESTATE  
RED DEER GENETICS

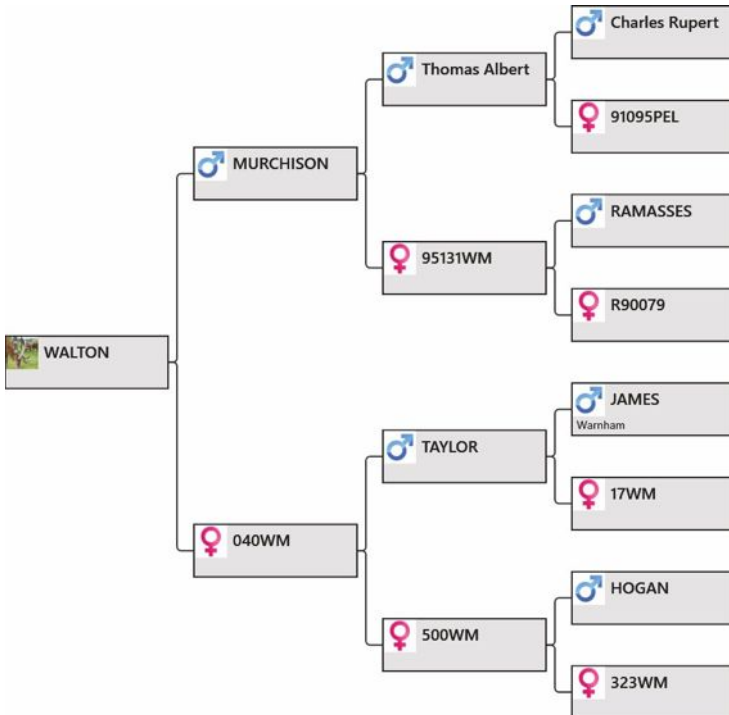
Walton  
Riley  
General Peel  
Coco  
Jackson

# Walton



## Biography:

Walton is undoubtedly one of the most outstanding stags to ever come out of the Windermere stud. He is a Pure Warnham with very clean, heavy velvet with excellent heritability leaving some powerful young stags in his wake. Walton won the National Velvet Competition as a 2 year old cutting an impressive 5.8kg of SA velvet. At 3 years he cut 8.06kg SA2 and 4 years 9.9kg of SA2. This year he cut 12.6kg SA2 of very clean velvet.



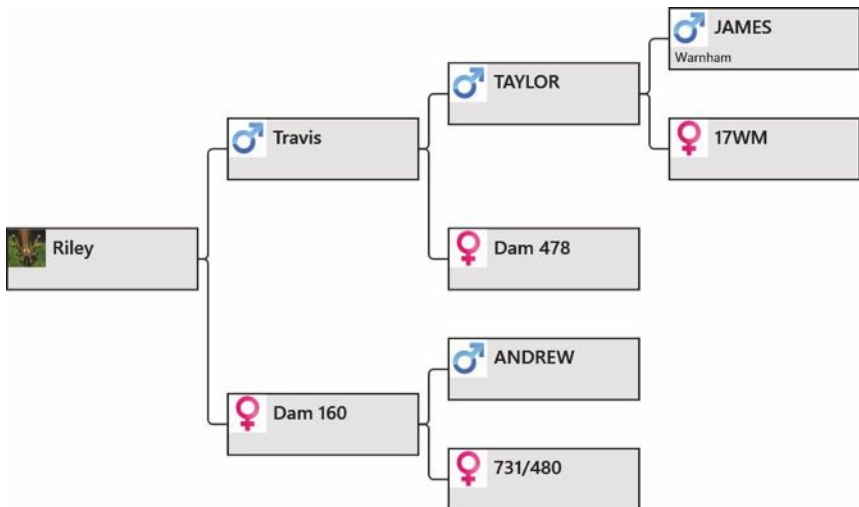
# Riley



**Birthdate:** 2004

## **Biography:**

“RILEY” is a young PURE WARNHAM sire, bred by TRAVIS over our outstanding DAM.160 (also the dam of JAMES II). He is a very big stag who is passing on good size genetics. He has a very tidy antler style, long, clean and correct, and cut 8.5kg SAV at four years and 10.0kg of SA2 at seven years. We rate him extremely highly as a Windermere Sire.



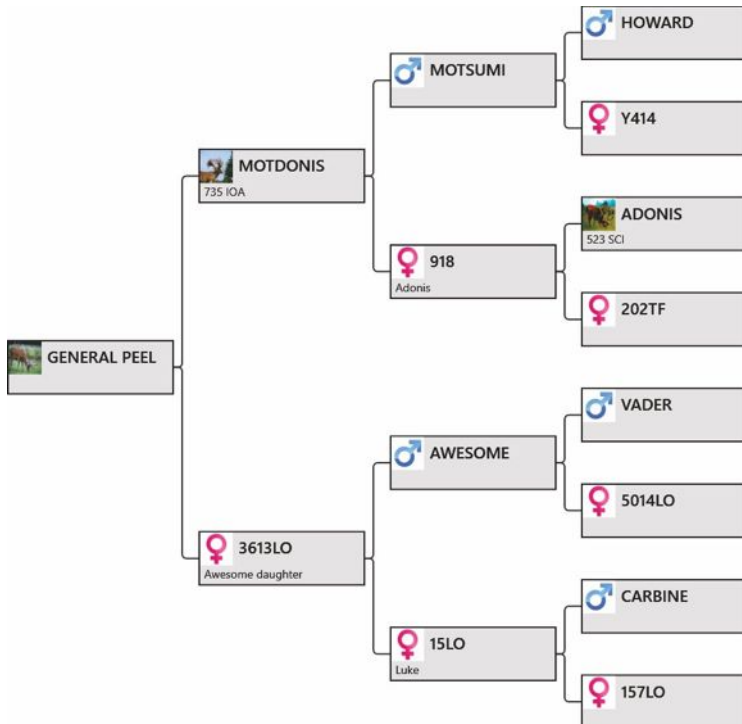
# General Peel



**Birthdate:** 2005

## Biography:

General Peel is a very important sire at Peel Forest. He possesses all the criteria to cross with Multi High Scoring antler. The breed plan was to cross heavy beam with clean, long scoring tynes. We have it all and more in this powerful sire. General has a big powerful body structure with an exceptional 12 month DBV of 8.57 for growth and is a very quiet, easy going stag.



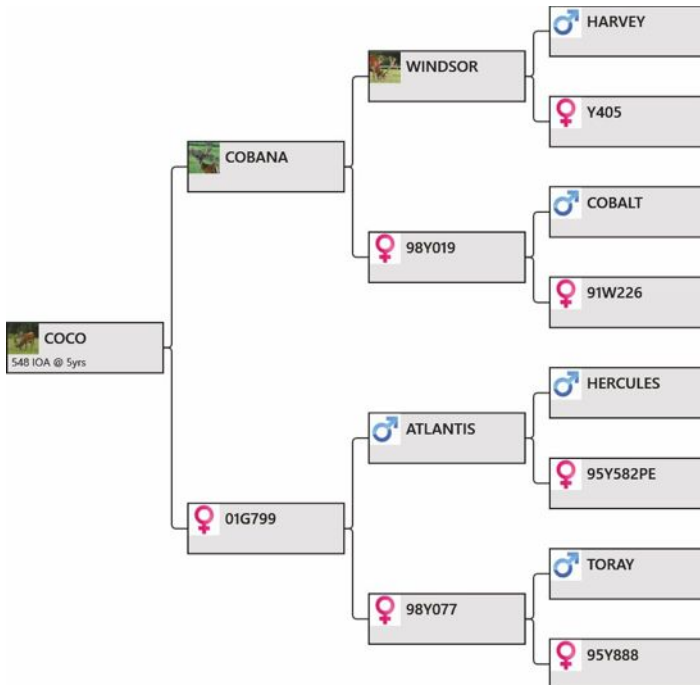
# Coco



**Birthdate:** 2004

**Biography:**

Coco was a new bloodline to Peel Forest. A complete outcross which had an immediate success. His progeny have been excellent, extremely wide and heavy beamed. He is passing on clean long tynes with no hangers lower than the velvet cut. His progeny are cutting good velvet with large bodies. We could not be more pleased with his progress to date and look forward to the many exciting animals he will leave. We continue to use this bloodline through a very good son. We retained 'Milo' and the very impressive 'Coed' sold in our 2011 sale to Ian Scott.



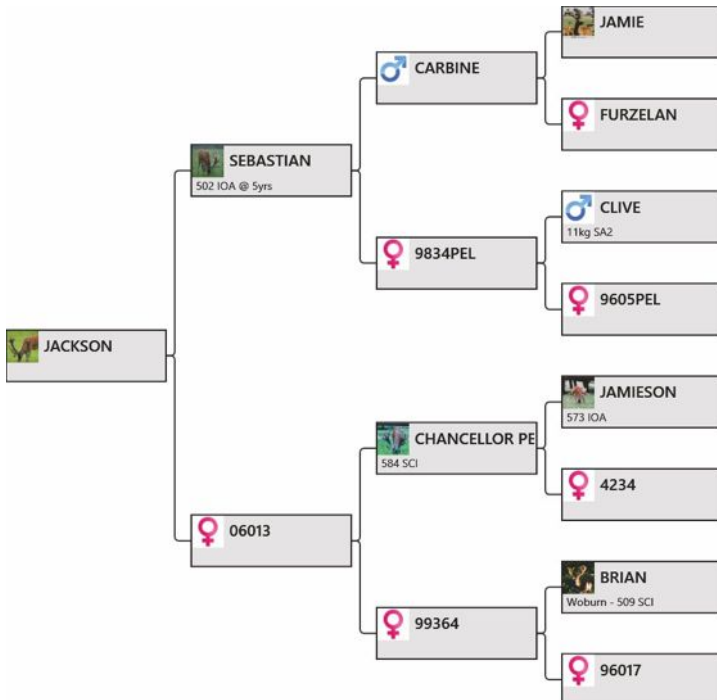
# Jackson



Birthdate: 2008

## Biography:

Jackson is a very good Sebastian son we have kept for his excellent length in all tynes and main beam. His thick main beam, ability to add points and stay clean in the velvet cut are important English traits. The bottom line of Chancellor Peel over the best performing Brian daughter also adds great strength to this young Sire's credentials.



# STAGS FOR SALE

Tag No.	Lot	Yearling BV	Yearling Weight	2yr Antler	Breed Type	Sire	Dam's Sire
12092	1	-4.83	97kg	-	Pure Warnham	Travis	WALTON
12078	2	3.51	111.2kg	-	Pure Warnham	WALTON	SOVEREIGN
12056	3	-0.67	94.4kg	-	Pure Warnham	WALTON	Riley
12115	4	5.63	112kg	-	Pure Warnham Woburn	WALTON	McLEOD
12100	5	6.05	112.5kg	-	Pure Warnham Woburn	WALTON	AZTEC
12023	6	2.87	98.3kg	-	Pure Warnham	WALTON	MURCHISON
12102	7	4.52	102.3kg	-	Pure Warnham	WALTON	WINDSOR
12019	8	2.98	109.4kg	-	Pure Warnham	WALTON	JAMES
12051	9	3.59	109kg	-	Pure Warnham Woburn	WALTON	McLEOD
12058	10	3.7	102.3kg	-	Pure Warnham Woburn	WALTON	Aztec
12094	11	2.95	97.9kg	-	Pure Warnham Woburn	WALTON	Travis
12020	12	7.13	108.1kg	-	Pure Warnham Woburn	WALTON	HARVEY
12107	13	0.51	99.2kg	-	Pure Warnham Woburn	Riley	McLEOD
12060	14	-4.73	88.6kg	-	Pure Warnham Woburn	Victor	SOVEREIGN
12120	15	4.52	105.4kg	-	Pure Warnham	WALTON	SOVEREIGN
12113	16	3.21	101.9kg	-	Pure Warnham	WALTON	Riley
12096	17	5.12	109kg	-	Pure Warnham Woburn	WALTON	SOVEREIGN
12111	18	1.15	105kg	-	Pure Warnham Woburn	Riley	McLEOD
12095	19	-2.79	100.1kg	-	Pure Warnham Woburn	Travis	McLEOD
12105	20	4.21	102.8kg	-	Pure Warnham Woburn	WALTON	Travis
11765	21	2.97	N/A	6kg HA	Trophy	BERNARD	5096
11784	22	0.26	102.8kg	5.6kg HA	Trophy	GENERAL PEEL	JAMIESON
11712	23	7.67	115.9kg	4.8kg HA	Trophy	WAIPORI	AWESOME
11683	24	8.96	115.4kg	5.6kg HA	Trophy	Hannibal	1130RD
111059	25	3.45	105.7kg	3.6kg HA	Trophy	COCO	MOTDONIS
11490	26	-1.89	99.9kg	2.6kg Velvet	Pure English	JACKSON	BIG MAC
11587	27	2.14	118.8kg	3.2kg Velvet	Trophy	COCO	MAJOR PEEL
11263	28	-3.23	100.9kg	2.6kg Velvet	Pure English	JOHN BOY	CHANCELLOR PEEL
11502	29	-3.6	N/A	2.6kg Velvet	Pure English	ROB ROY	CHANCELLOR PEEL
11019	30	6.08	108.6kg	4.4kg HA	Trophy	Hannibal	MAJOR PEEL
111157	31	2.36	104.8kg	2.8kg Velvet	Pure English	JACKSON	BIG MAC
111168	32	-1.73	108.6kg	3kg SA2 Velvet	Pure English	JACKSON	MATHIAS
11686	33	2.28	111.5kg	2.2kg Velvet	Trophy	COCO	BLANDSWOOD

# Lot # 1 - Windermere

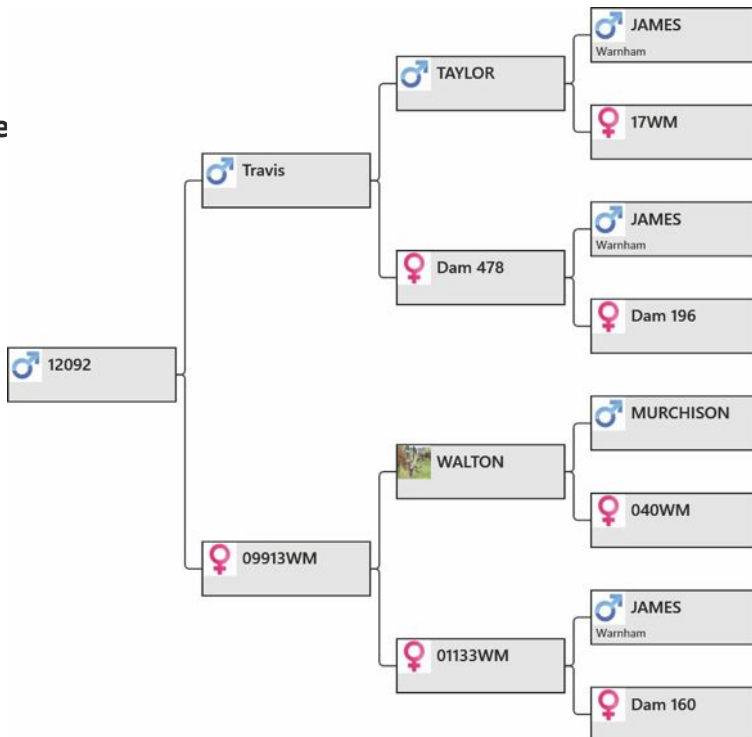
Animal Tag: 12092  
Breed Type: Pure Warnham

Yearling BV: -4.83  
Yearling Weight: 97kg  
Weigh Date: 30/11/2013



PEEL FOREST  
ESTATE  
RED DEER GENETICS

## Pedigree



## Biography:

Travis back over a young Walton hind. Very thick beam showing. Will be a tremendous velvet sire in the future. 133 is a full sister to James II on the Dam side. She is a well proven Sire producer.

Sale Weight:

Price:

Buyer:





# Lot # 2 - Windermere

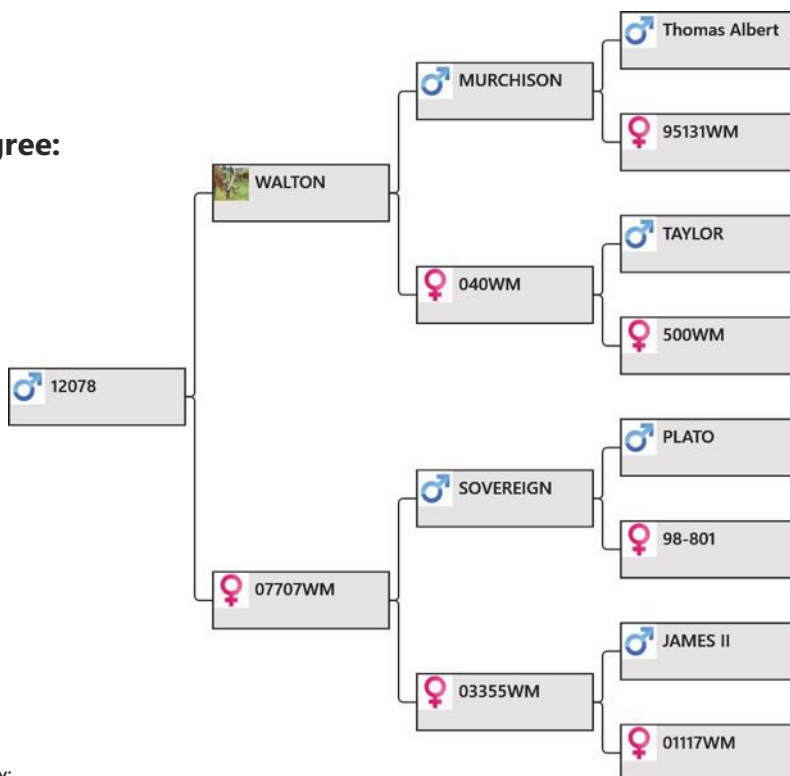
Animal Tag: 12078  
Breed Type: Pure Warnham

Yearling BV: 3.51  
Yearling Weight: 111.2kg  
Weigh Date: 30/11/2013



PEEL FOREST  
ESTATE  
RED DEER GENETICS

## Pedigree:



## Biography:

Very good pure Warnham son of Walton. Thick beam at this early stage. Again, featuring James II on the bottom line with proven genetics to pass-on clean, heavy velvet.

Sale Weight:

Price:

Buyer:



# Lot # 3 - Windermere

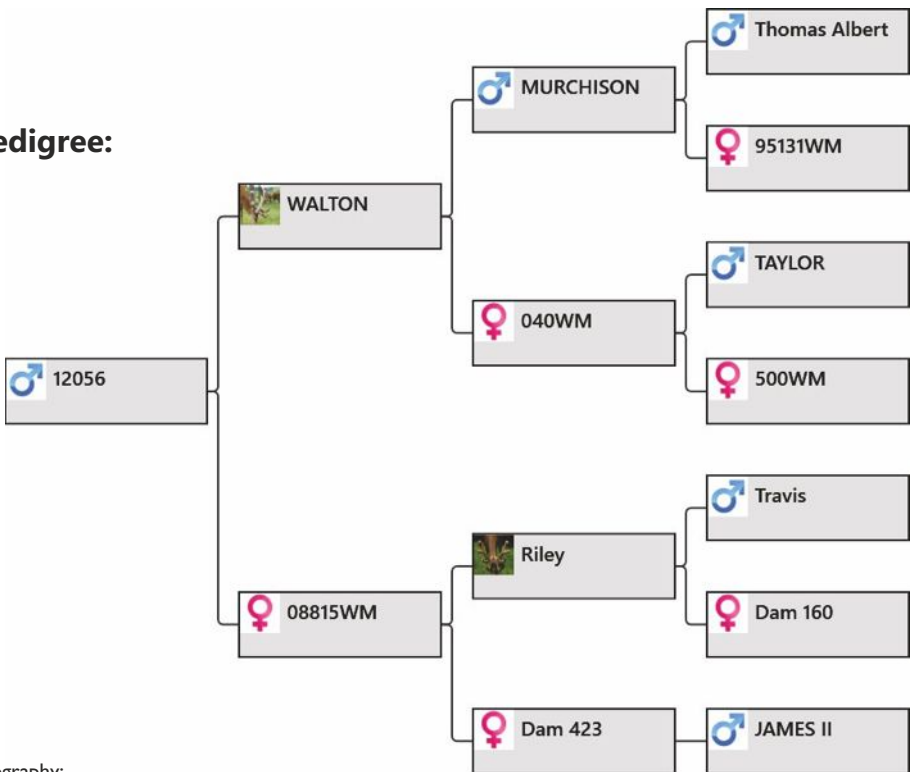
Animal Tag: 12056  
Breed Type: Pure Warnham

Yearling BV: -0.67  
Yearling Weight: 94.4kg  
Weigh Date: 30/11/2013



**PEEL FOREST**  
ESTATE  
RED DEER GENETICS

## Pedigree:



## Biography:

The Walton, Riley cross are coming through very strong in clean, heavy beam. 056 will look very good by sale day.

Sale Weight:

Price:

Buyer:



# Lot # 4 - Windermere

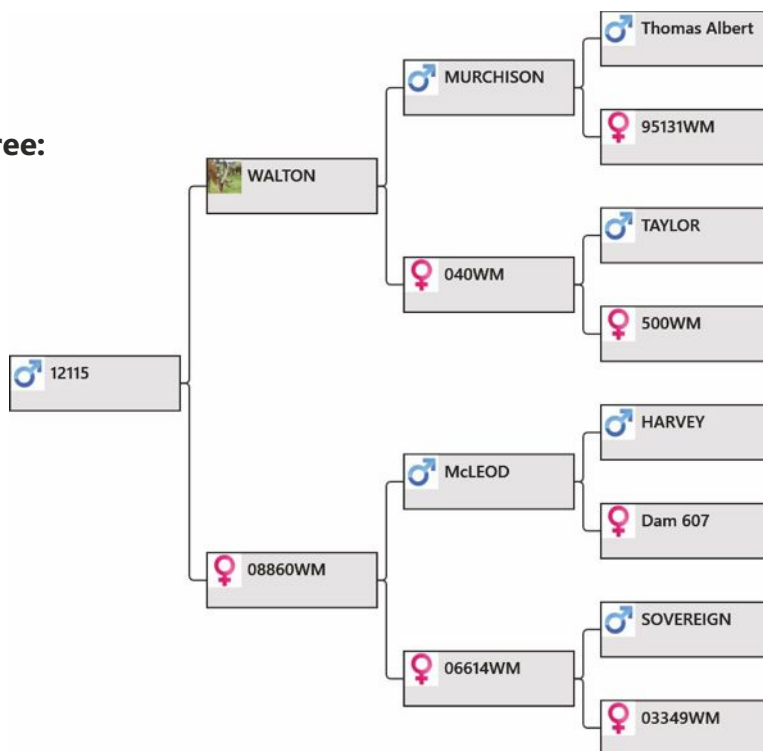
Animal Tag: 12115  
Breed Type: Pure Warnham/Woburn



Yearling BV: 5.63  
Yearling Weight: 112kg  
Weigh Date: 30/11/2013

PEEL FOREST  
ESTATE  
RED DEER GENETICS

## Pedigree:



## Biography:

115 has very good beam. His down turning brows are not in the bloodline and will correct themselves next year. Full brother sold last year in lot 3 and another brother in lot 1 in 2012. Very powerful sire and proven cross.

Sale Weight:

Price:

Buyer:



# Lot # 5 - Windermere

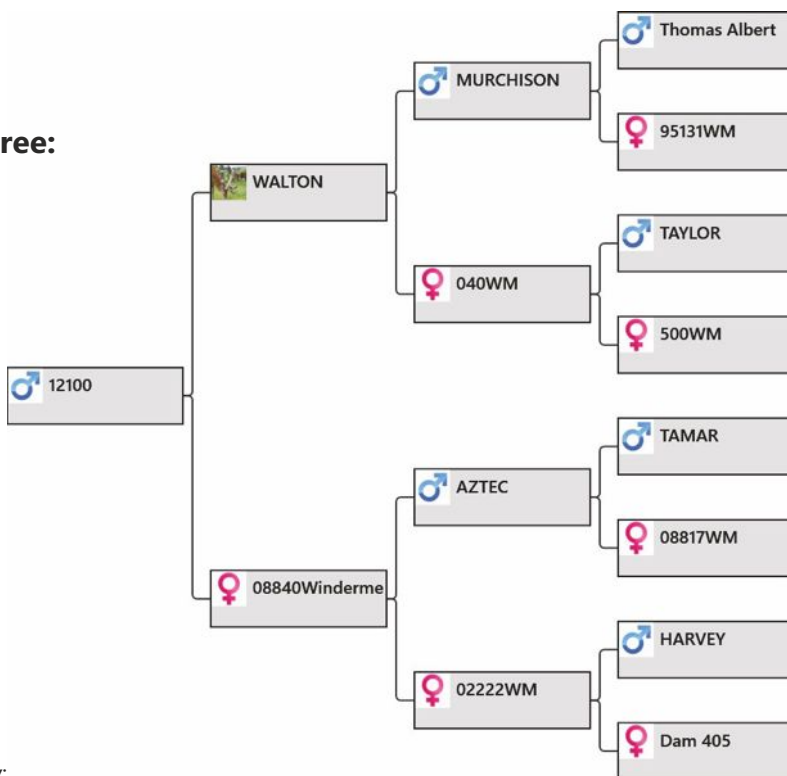
Animal Tag: 12100  
Breed Type: Pure Warnham/Woburn



Yearling BV: 6.05  
Yearling Weight: 112.5kg  
Weigh Date: 30/11/2013

**PEEL FOREST**  
ESTATE  
RED DEER GENETICS

## Pedigree:



## Biography:

Lovely, big stag that we would expect to have a strong top in his head with Aztec and Harvey both featuring.

Sale Weight:

Price:

Buyer:



# Lot # 6 - Windermere

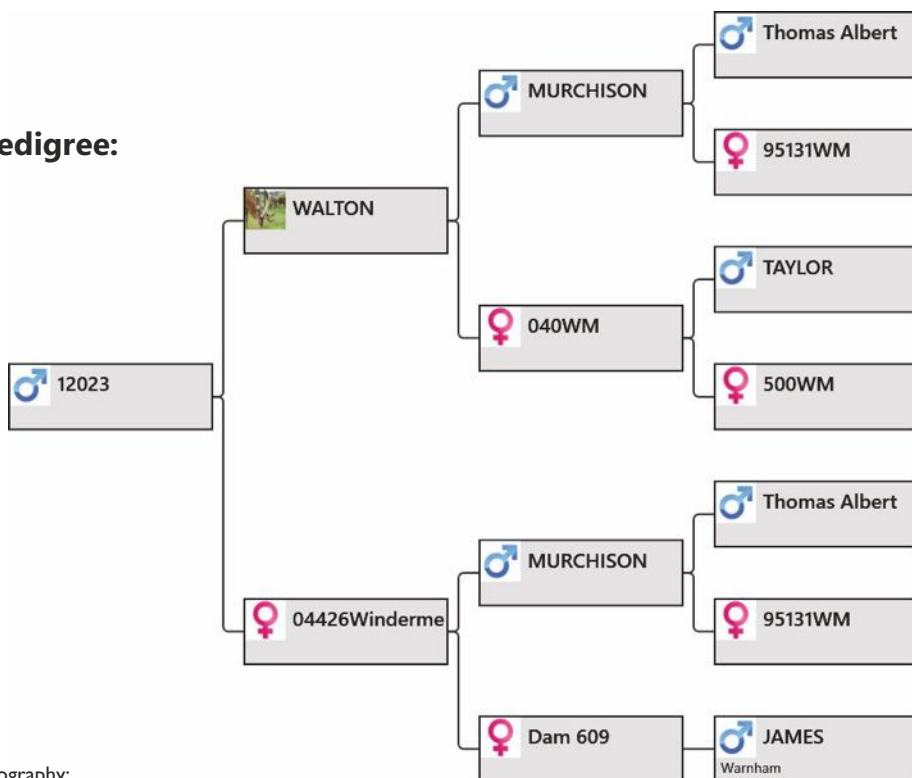
Animal Tag: 12023  
Breed Type: Pure Warnham

Yearling BV: 2.87  
Yearling Weight: 98.3kg  
Weigh Date: 30/11/2013



PEEL FOREST  
ESTATE  
RED DEER GENETICS

## Pedigree:



## Biography:

John's breeding objective here has certainly worked. Very good beam and tyne length at this early stage.

Sale Weight:

Price:

Buyer:



# Lot # 7 - Windermere

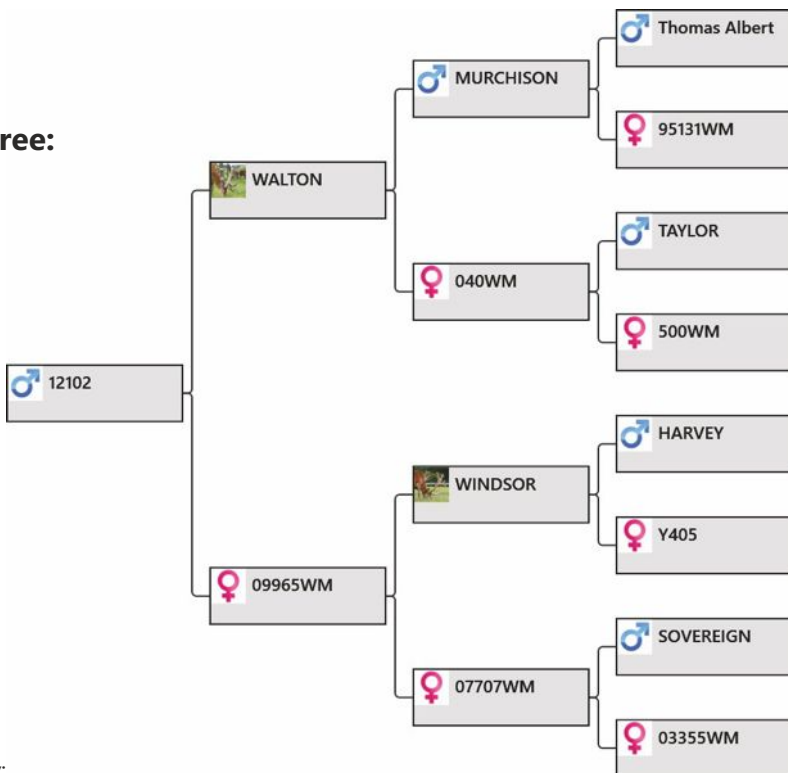
Animal Tag: 12102  
Breed Type: Pure Warnham

Yearling BV: 4.52  
Yearling Weight: 102.3kg  
Weigh Date: 30/11/2013



PEEL FOREST  
ESTATE  
RED DEER GENETICS

## Pedigree:



## Biography:

Very nice beam coming on from 102. The Waltons are so reliable. He's got a way to go, but has all the breeding to pass on great style and beam.

Sale Weight:

Price:

Buyer:



# Lot # 8 - Windermere

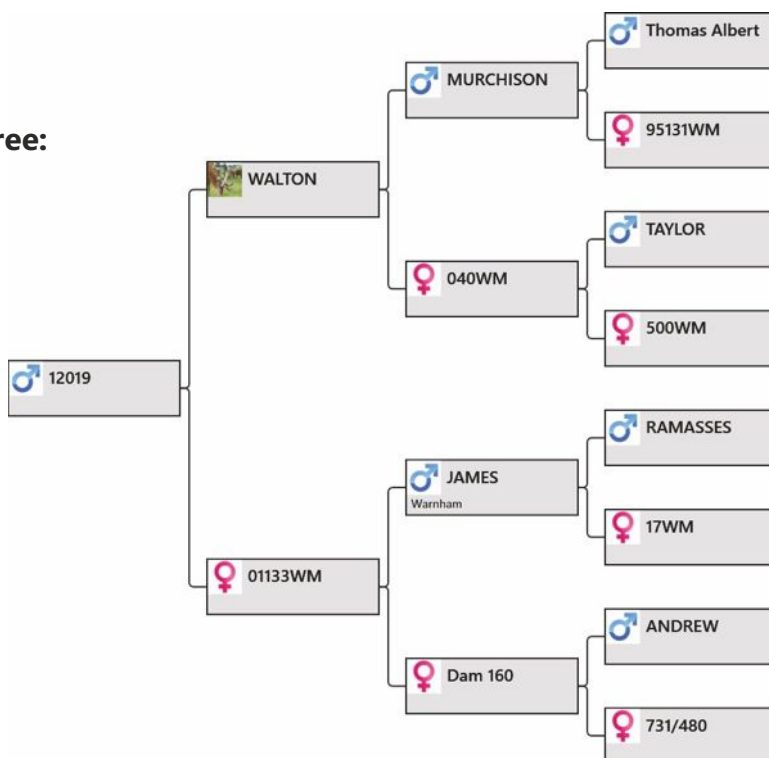
Animal Tag: 12019  
Breed Type: Pure Warnham

Yearling BV: 2.98  
Yearling Weight: 109.4kg  
Weigh Date: 30/11/2013



PEEL FOREST  
ESTATE  
RED DEER GENETICS

## Pedigree:



## Biography:

Walton son showing again the strength of pass-on. Strong even head. Dam of lot 1 in 2012 and lot 4 in 2009.

Sale Weight:

Price:

Buyer:



# Lot # 9 - Windermere

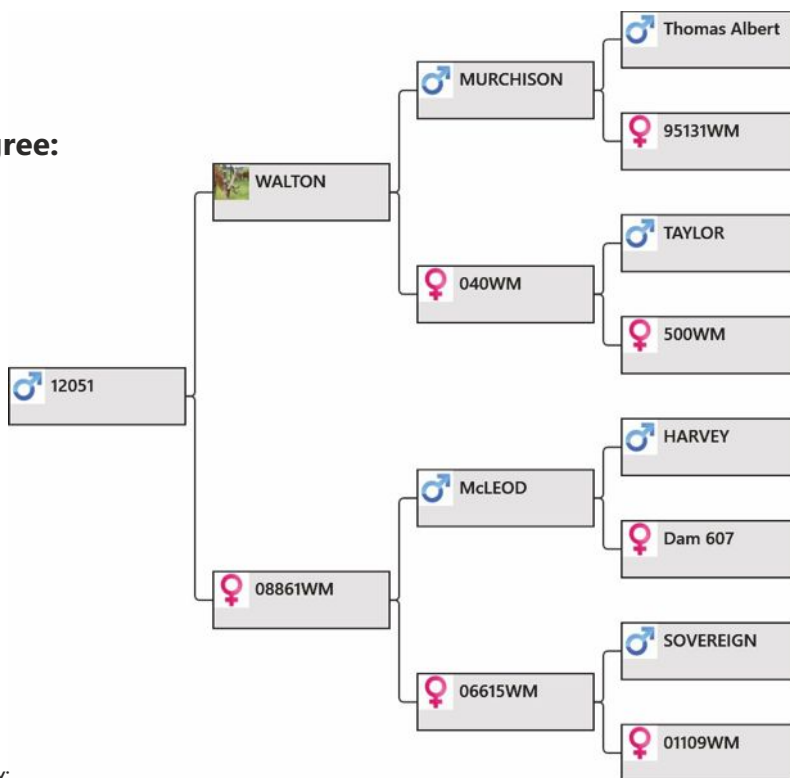
Animal Tag: 12051  
Breed Type: Pure Warnham/Woburn



Yearling BV: 3.59  
Yearling Weight: 109kg  
Weigh Date: 30/11/2013

**PEEL FOREST**  
ESTATE  
RED DEER GENETICS

## Pedigree:



## Biography:

Again, another Walton sire who has very heavy, dark beam. His head is at a very early stage but is looking very promising.

Sale Weight:

Price:

Buyer:



# Lot # 10 - Windermere

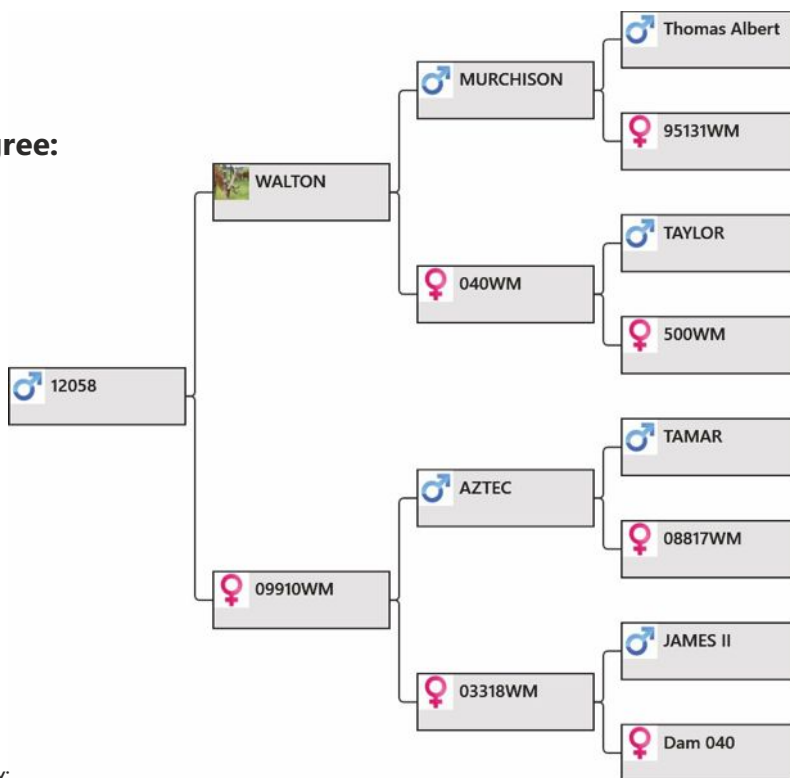
Animal Tag: 12058  
Breed Type: Pure Warnham/Woburn



PEEL FOREST  
ESTATE  
RED DEER GENETICS

Yearling BV: 3.7  
Yearling Weight: 102.3kg  
Weigh Date: 30/11/2013

## Pedigree:



## Biography:

A later head, looking very good. Could really be one to watch on sale day.

Sale Weight:

Price:

Buyer:

# Lot # 11 - Windermere

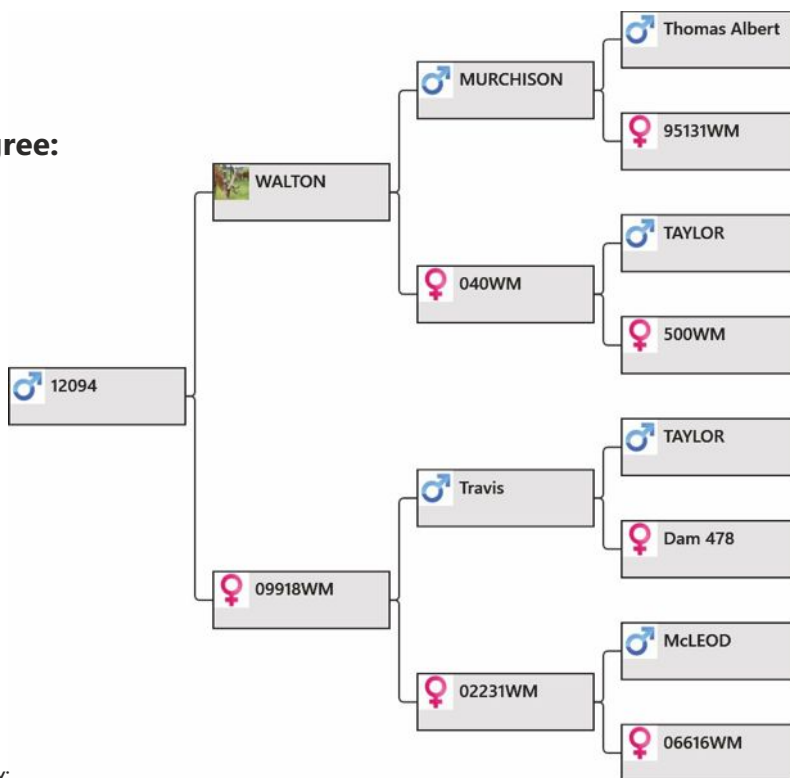
Animal Tag: 12094  
Breed Type: Pure Warnham/Woburn



**PEEL FOREST**  
ESTATE  
RED DEER GENETICS

Yearling BV: 2.95  
Yearling Weight: 97.9kg  
Weigh Date: 30/11/2013

## Pedigree:



## Biography:

This Walton son is looking fantastic with a good deal of growing to do by sale day. Great sire.

Sale Weight:

Price:

Buyer:



# Lot # 12 - Windermere

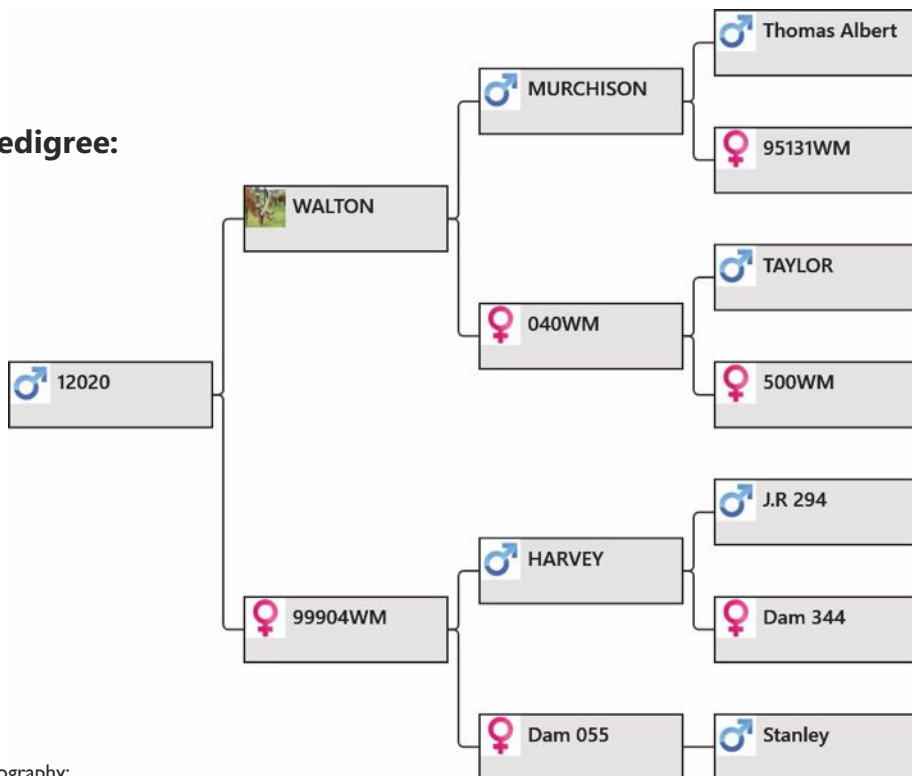
**Animal Tag:** 12020  
**Breed Type:** Pure Warnham/Woburn



**Yearling BV:** 7.13  
**Yearling Weight:** 108.1kg  
**Weigh Date:** 30/11/2013

**PEEL FOREST**  
 ESTATE  
 RED DEER GENETICS

## Pedigree:



## Biography:

By Walton out of proven Harvey daughter. Dam of lot 23 in 2009, lot 16 in 2010 and lot 17 in 2011. Thick velvet on the way. Very early at catalogue.

**Sale Weight:**

**Price:**

**Buyer:**



# Lot # 13 - Windermere

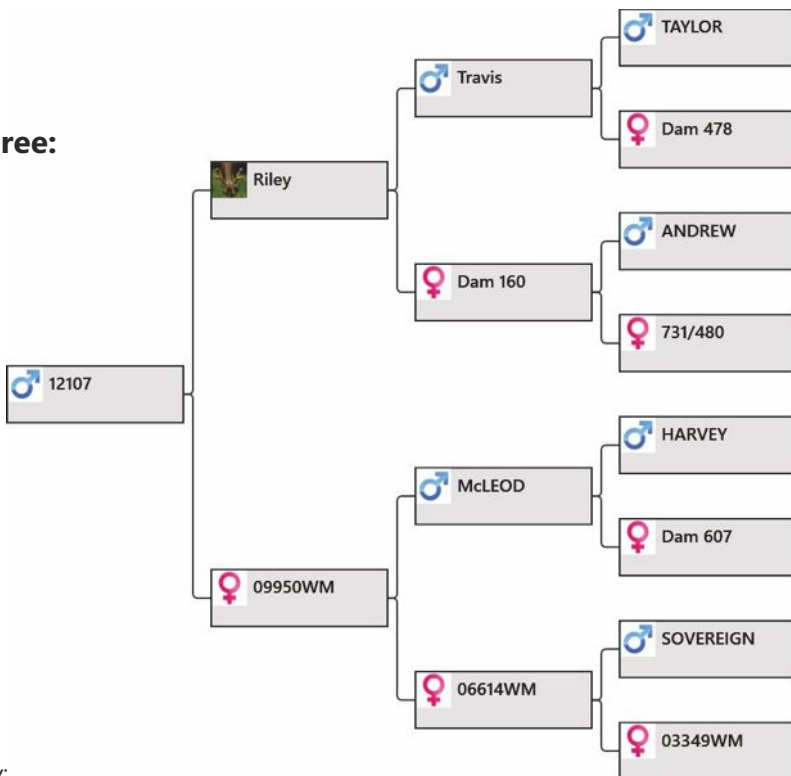
**Animal Tag:** 12107  
**Breed Type:** Pure Warnham/Woburn



**Yearling BV:** 0.51  
**Yearling Weight:** 99.2kg  
**Weigh Date:** 30/11/2013

**PEEL FOREST**  
ESTATE  
RED DEER GENETICS

## Pedigree:



## Biography:

Riley has produced very good length of beam with consistent, long bottom tynes, crossed with a young McLeod daughter. Looks very good.

**Sale Weight:**

**Price:**

**Buyer:**



# Lot # 14 - Windermere

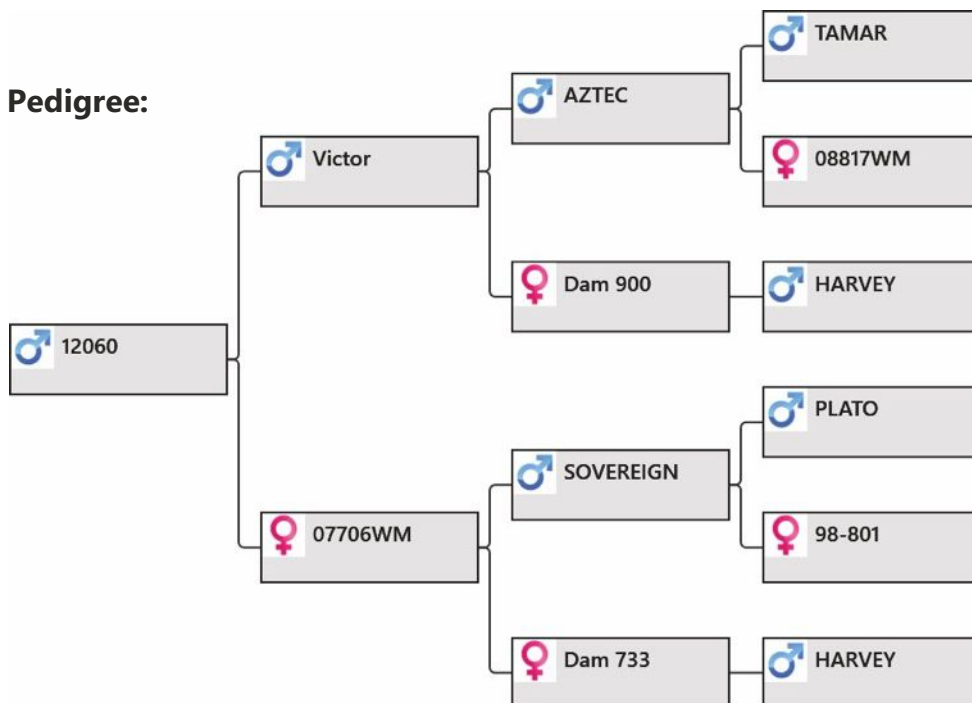
**Animal Tag:** 12060  
**Breed Type:** Pure Warnham/Woburn



**PEEL FOREST**  
ESTATE  
RED DEER GENETICS

**Yearling BV:** -4.73  
**Yearling Weight:** 88.6kg  
**Weigh Date:** 30/11/2013

## Pedigree:



## Biography:

Very thick velvet at this early stage. Large bulb just beginning to show. A son of the Woburn Sire John retained...Victor. Excellent beam and will be multi pointed.

**Sale Weight:**

**Price:**

**Buyer:**



# Lot # 15 - Windermere

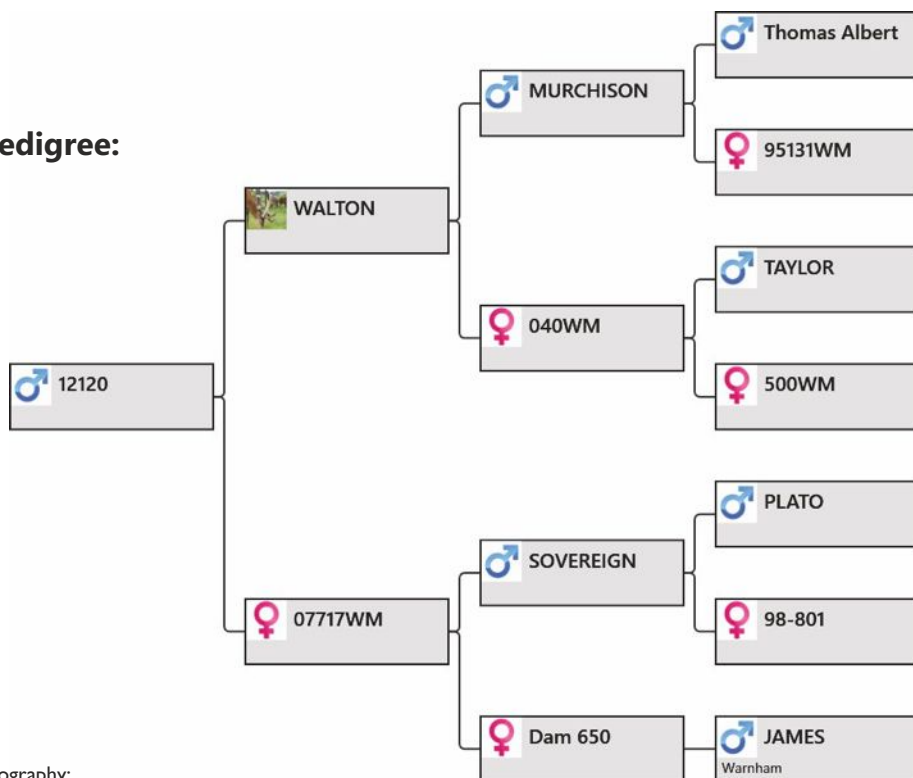
**Animal Tag:** 12120  
**Breed Type:** Pure Warnham

**Yearling BV:** 4.52  
**Yearling Weight:** 105.4kg  
**Weigh Date:** 30/11/2013



**PEEL FOREST**  
ESTATE  
RED DEER GENETICS

## Pedigree:



## Biography:

The potency of Walton is as high as any stag we have used and very few of his sons born in 2012 have missed the cut. 120 is another fine example of this wonderful bloodline.

**Sale Weight:**

**Price:**

**Buyer:**



# Lot # 16 - Windermere

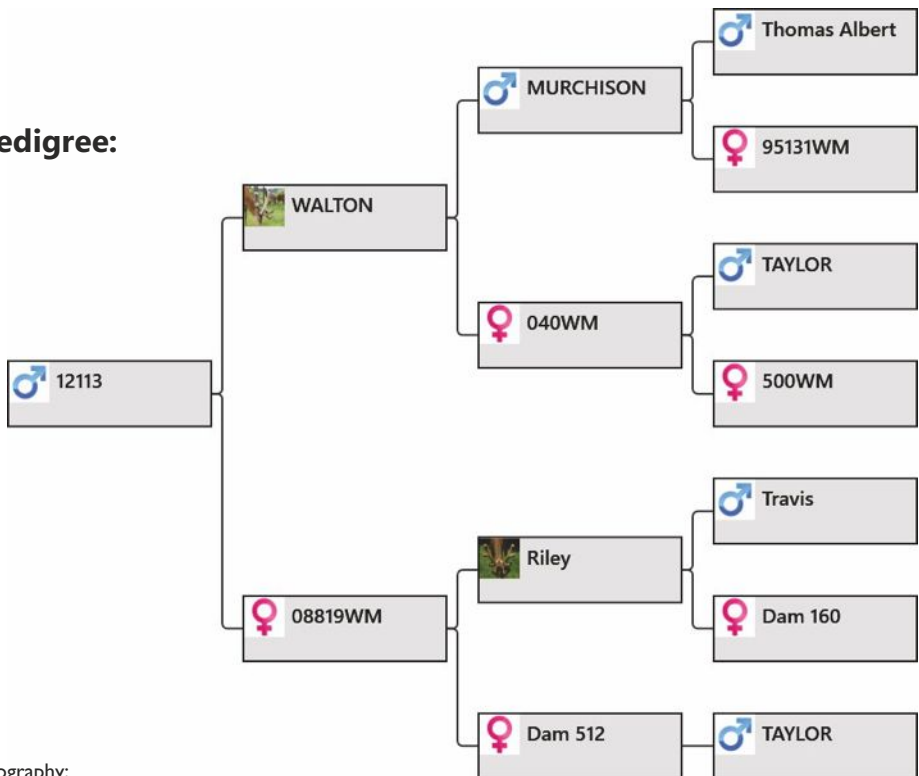
Animal Tag: 12113  
Breed Type: Pure Warnham

Yearling BV: 3.21  
Yearling Weight: 101.9kg  
Weigh Date: 30/11/2013



PEEL FOREST  
ESTATE  
RED DEER GENETICS

## Pedigree:



## Biography:

Very promising at this stage. Except this boy to breed on powerful progeny. Two potent sires. This type of genetics should breed stronger than himself.

Sale Weight:

Price:

Buyer:



# Lot # 17 - Windermere

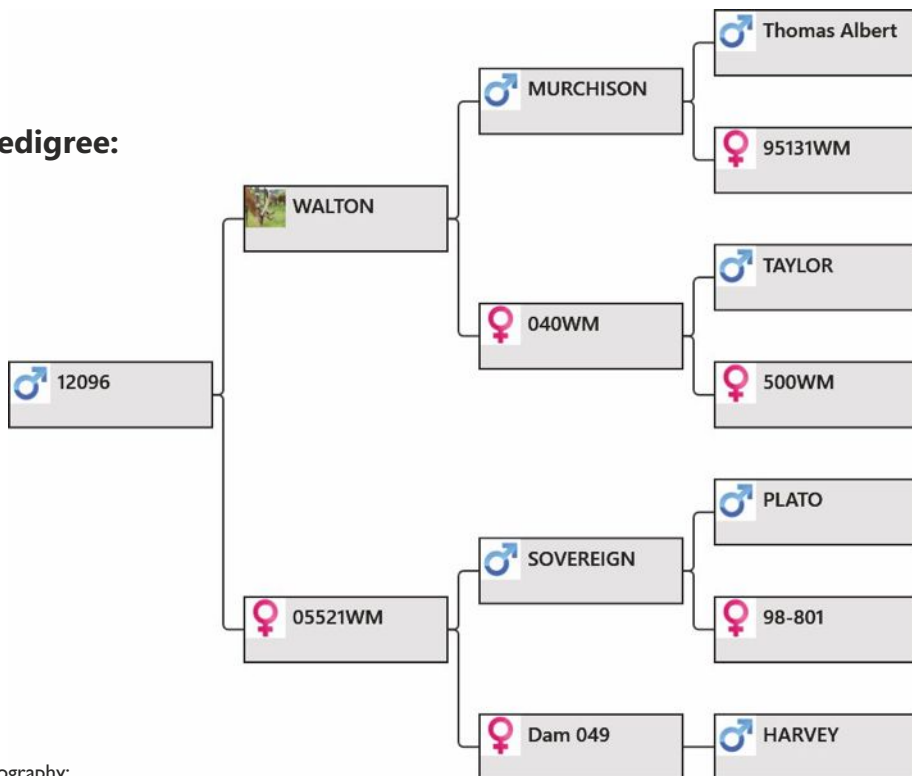
Animal Tag: 12096  
Breed Type: Pure Warnham/Woburn



Yearling BV: 5.12  
Yearling Weight: 109kg  
Weigh Date: 30/11/2013

PEEL FOREST  
ESTATE  
RED DEER GENETICS

## Pedigree:



## Biography:

Another very good son of Walton. This cross of Walton over the Sovereign hinds is proving to be very successful. Lot 1 last year was a tremendous example. Another strong looking head developing here.

Sale Weight:

Price:

Buyer:





# Lot # 18 - Windermere

Animal Tag: 12111  
Breed Type: Pure Warnham/Woburn



Yearling BV: 1.15  
Yearling Weight: 105kg  
Weigh Date: 30/11/2013

**PEEL FOREST**  
ESTATE  
RED DEER GENETICS

## Pedigree:



## Biography:

Riley and McLeod again the cross here. Very late head but expecting to impress as he grows.

Sale Weight:

Price:

Buyer:



# Lot # 19 - Windermere

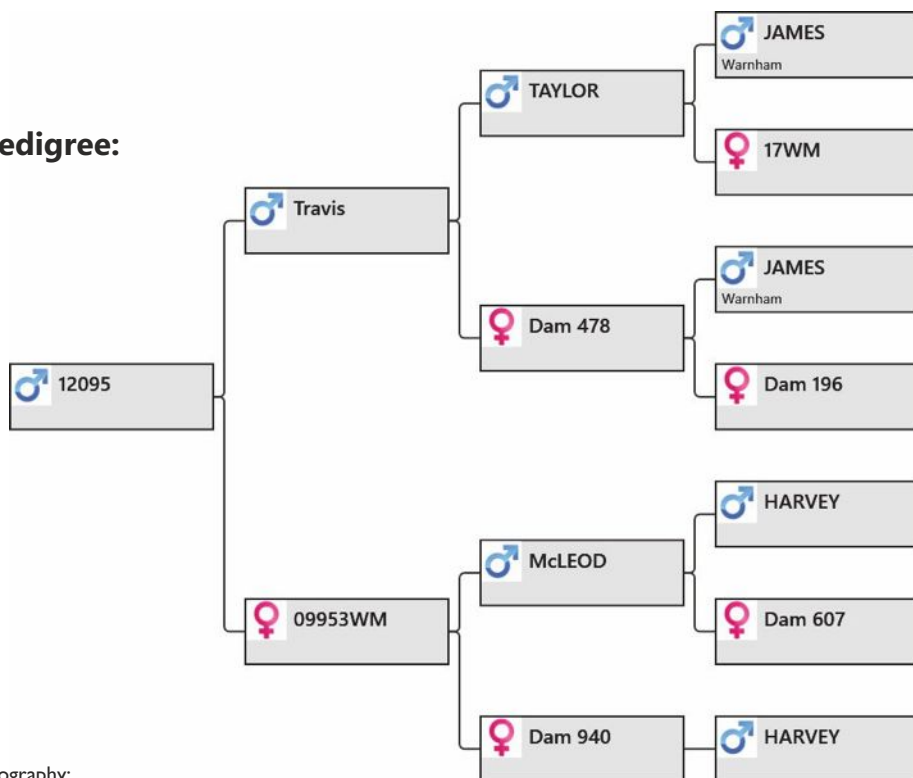
Animal Tag: 12095  
Breed Type: Pure Warnham/Woburn



PEEL FOREST  
ESTATE  
RED DEER GENETICS

Yearling BV: -2.79  
Yearling Weight: 100.1kg  
Weigh Date: 30/11/2013

## Pedigree:



## Biography:

There are very few sons of Travis in this age group and 095 looks very good to date. Out of a well proven Harvey Dam.

Sale Weight:

Price:

Buyer:



# Lot # 20 - Windermere

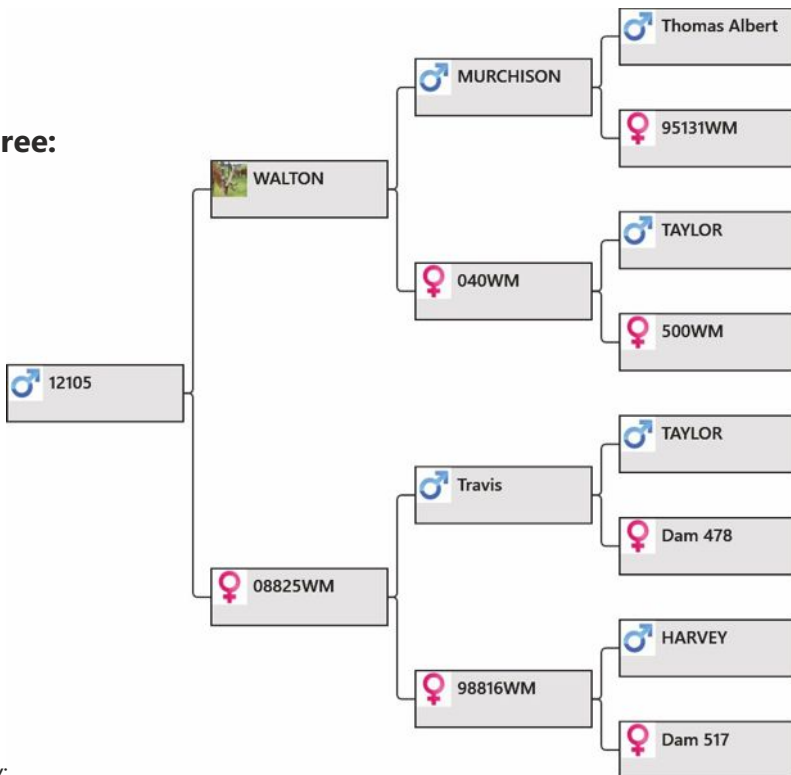
**Animal Tag:** 12105  
**Breed Type:** Pure Warnham/Woburn



**Yearling BV:** 4.21  
**Yearling Weight:** 102.8kg  
**Weigh Date:** 30/11/2013

**PEEL FOREST**  
ESTATE  
RED DEER GENETICS

## Pedigree:



## Biography:

The comments back on the 2nd December were "very thick above bay, very quiet, front end of catalogue". He is a wonderful young pure Warnham.

**Sale Weight:**

**Price:**

**Buyer:**



# Lot # 21

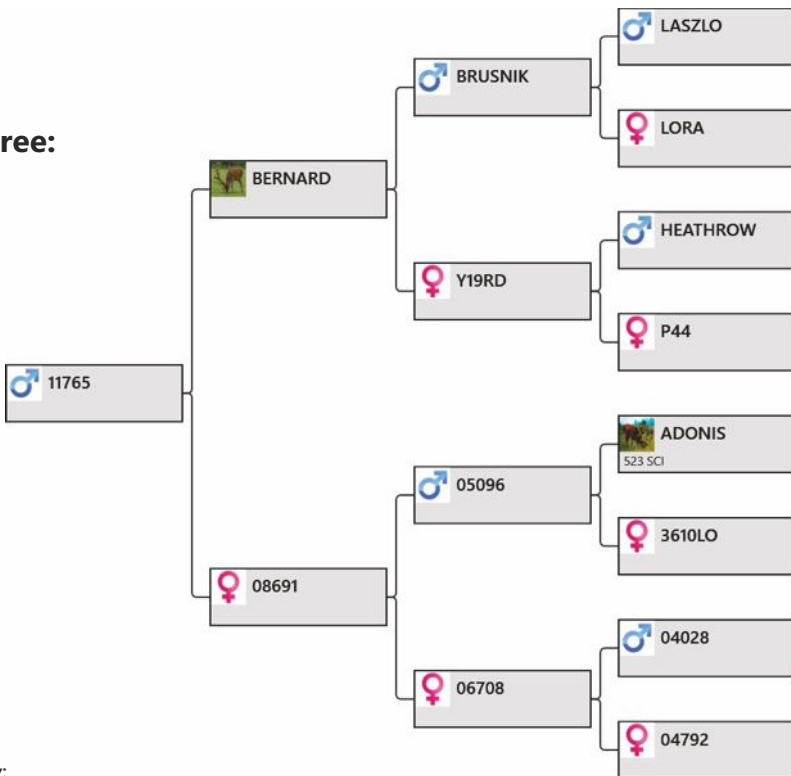
Animal Tag: 11765  
Breed Type: Trophy

Yearling BV: 2.97  
Yearling Weight: N/A  
Weigh Date: N/A  
2yr Antler: 6kg HA



PEEL FOREST  
ESTATE  
RED DEER GENETICS

## Pedigree:



## Biography:

Big, strong sire with very even antler. He has long style with good length in all his tynes. Heavy aspect to the attractive antler.

Sale Weight:

Price:

Buyer:



# Lot # 22

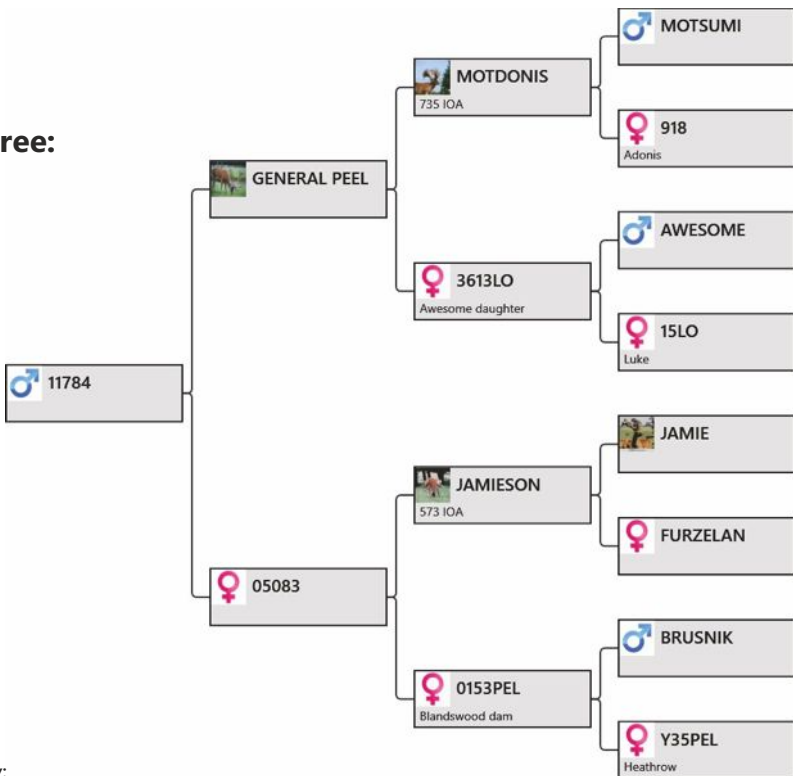
Animal Tag: 11784  
Breed Type: Trophy

Yearling BV: 0.26  
Yearling Weight: 102.8kg  
Weigh Date: 29/11/2012  
2yr Antler: 5.6kg HA



**PEEL FOREST**  
ESTATE  
RED DEER GENETICS

## Pedigree:



## Biography:

This stag has huge brows, very good spread and a trumpet of tops about to unfold on this promising General Peel son. As a 2 year old he had 27 points and outside span of 42 inches. Very strong Dam line with 05083 having an excellent 07' born stag in the trophy paddock scoring 550+SCI.

Sale Weight:

Price:

Buyer:

# Lot # 23

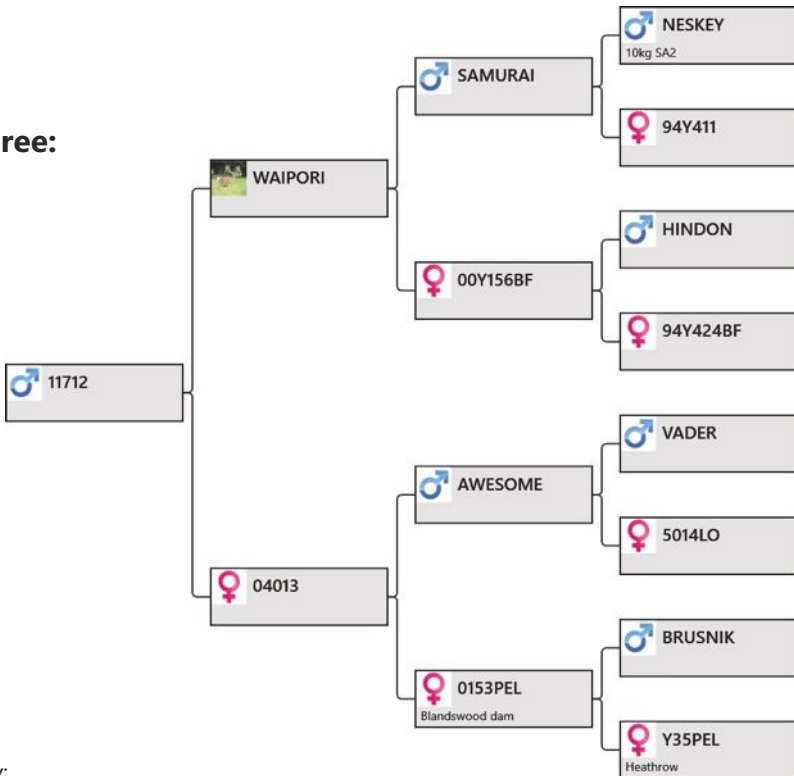
Animal Tag: 11712  
Breed Type: Trophy

Yearling BV: 7.67  
Yearling Weight: 115.9kg  
Weigh Date: 29/11/2012  
2yr Antler: 4.8kg HA



**PEEL FOREST**  
ESTATE  
RED DEER GENETICS

## Pedigree:



## Biography:

This stag is out of a full sister to Blandswood. He has very good length in his front 3 tynes, great spacing with heavy crown splitting at catalogue time. Big body and very promising young stag.

Sale Weight:

Price:

Buyer:



# Lot # 24

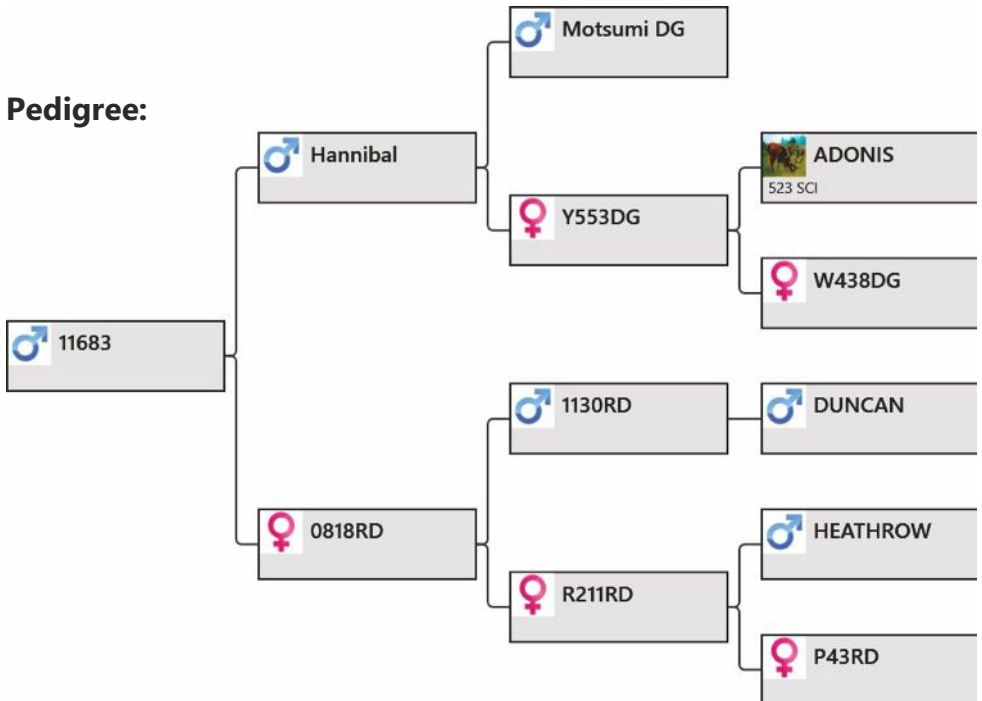
**Animal Tag:** 11683  
**Breed Type:** Trophy

**Yearling BV:** 8.96  
**Yearling Weight:** 115.4kg  
**Weigh Date:** 29/11/2012  
**2yr Antler:** 5.6kg HA



**PEEL FOREST**  
ESTATE  
RED DEER GENETICS

## Pedigree:



## Biography:

Powerful head on 683. Tynes are long and well spaced. Tops are filling out with alot to happen. Looks like a great head in the making. A great bodied stag. As a 2 year old he had 24 points and 36 outside span.

**Sale Weight:**

**Price:**

**Buyer:**



# Lot # 25

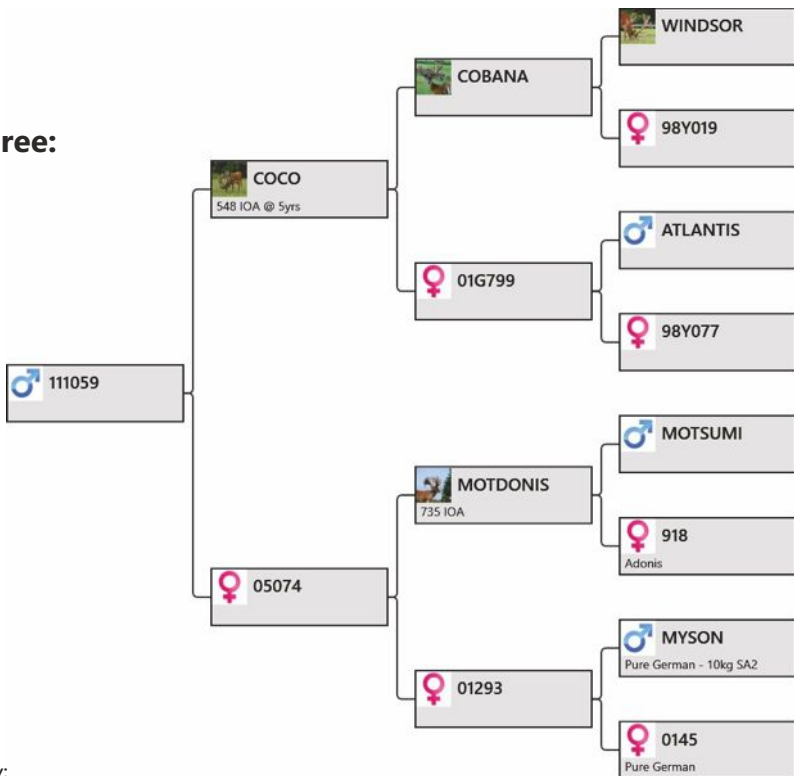
Animal Tag: 111059  
Breed Type: Trophy

Yearling BV: 3.45  
Yearling Weight: 105.7kg  
Weigh Date: 29/11/2012  
2yr Antler: 3.6kg HA



**PEEL FOREST**  
ESTATE  
RED DEER GENETICS

## Pedigree:



## Biography:

Very big stag carrying a heavy head. Looks like a 9x9 showing in his tops. A long way to go and should look good on sale day.

Sale Weight:

Price:

Buyer:





# Lot # 26

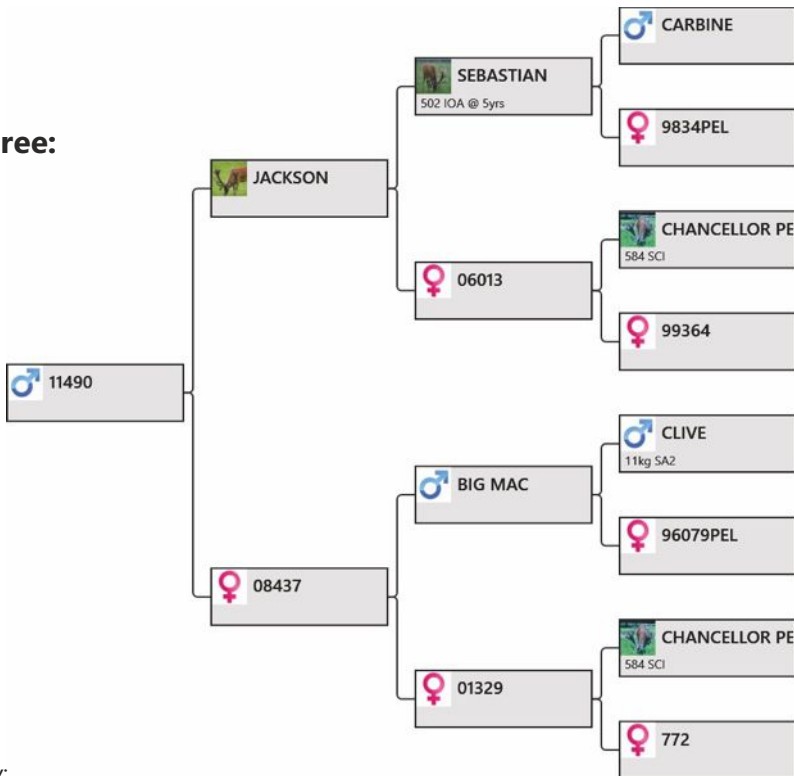
**Animal Tag:** 11490  
**Breed Type:** Pure English

**Yearling BV:** -1.89  
**Yearling Weight:** 99.9kg  
**Weigh Date:** 29/11/2012  
**2yr Antler:** 2.6kg Velvet



**PEEL FOREST**  
ESTATE  
RED DEER GENETICS

## Pedigree:



## Biography:

Son of a young sire, Jackson. Long front tyne like his father. 9x7 showing in his royals with alot of development yet. Dam 08437 first son cut 5.5kg of SA2 @ 3 years.

**Sale Weight:**

**Price:**

**Buyer:**



# Lot # 27

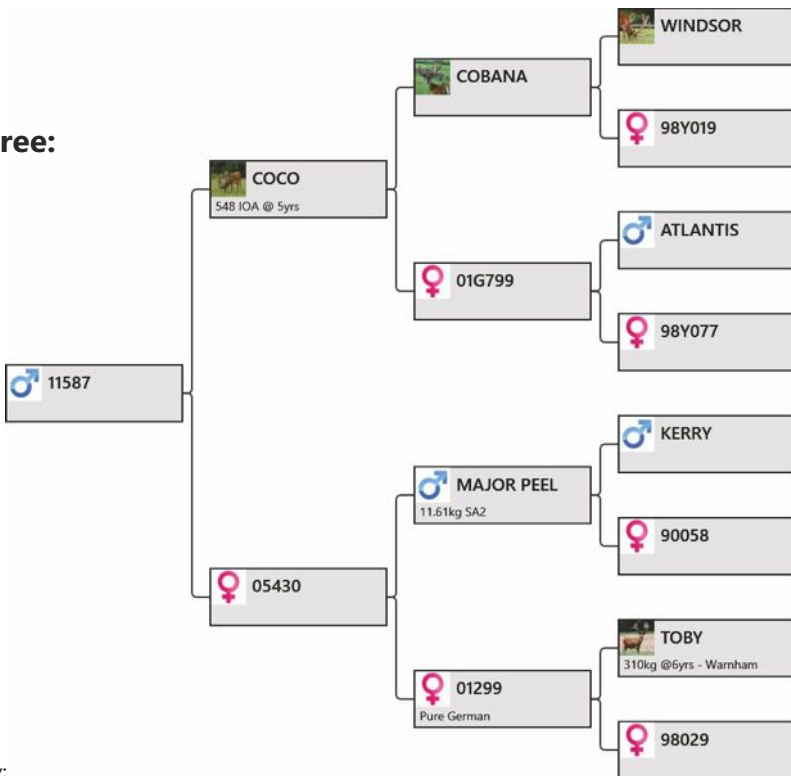
Animal Tag: 11587  
Breed Type: Trophy

Yearling BV: 2.14  
Yearling Weight: 118.8kg  
Weigh Date: 29/11/2012  
2yr Antler: 3.2kg Velvet



**PEEL FOREST**  
ESTATE  
RED DEER GENETICS

## Pedigree:



## Biography:

Its all heavy with this guy. Heavy beam and big heavy stag. Probably the biggest dimensions of the sale. CoCo certainly leaves mass.

Sale Weight:

Price:

Buyer:



# Lot # 28

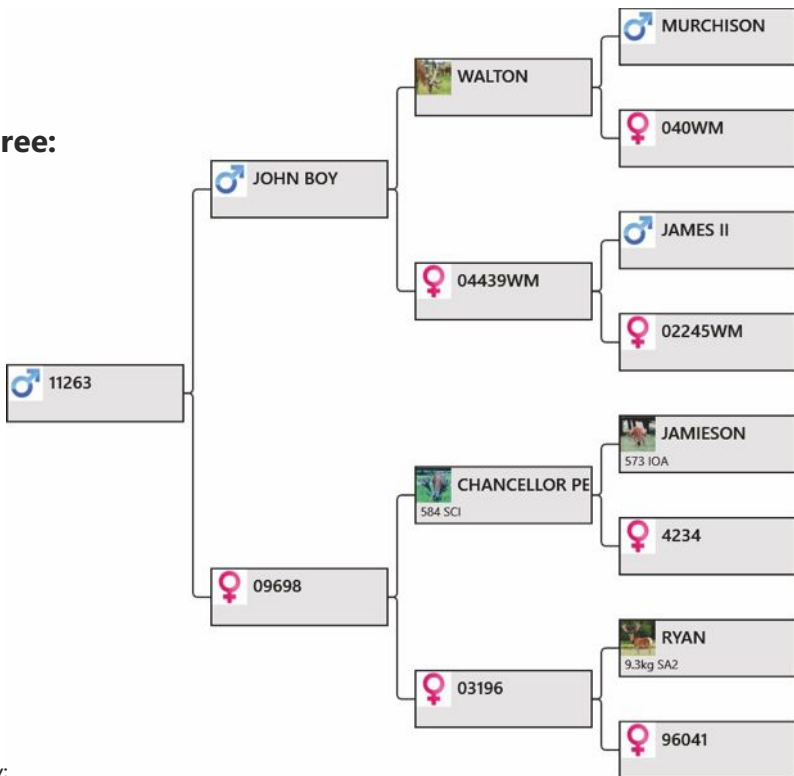
**Animal Tag:** 11263  
**Breed Type:** Pure English

**Yearling BV:** -3.23  
**Yearling Weight:** 100.9kg  
**Weigh Date:** 29/11/2012  
**2yr Antler:** 2.6kg Velvet



**PEEL FOREST**  
ESTATE  
RED DEER GENETICS

## Pedigree:



## Biography:

Long heavy beam on this guy. Great length above tray. Tops out and looks like a 7x8. Dam is a pure Furzeland and this is her first calf. Johnboy cut 9.6kg of SA2 this year at 6yrs.

**Sale Weight:**

**Price:**

**Buyer:**



# Lot # 29

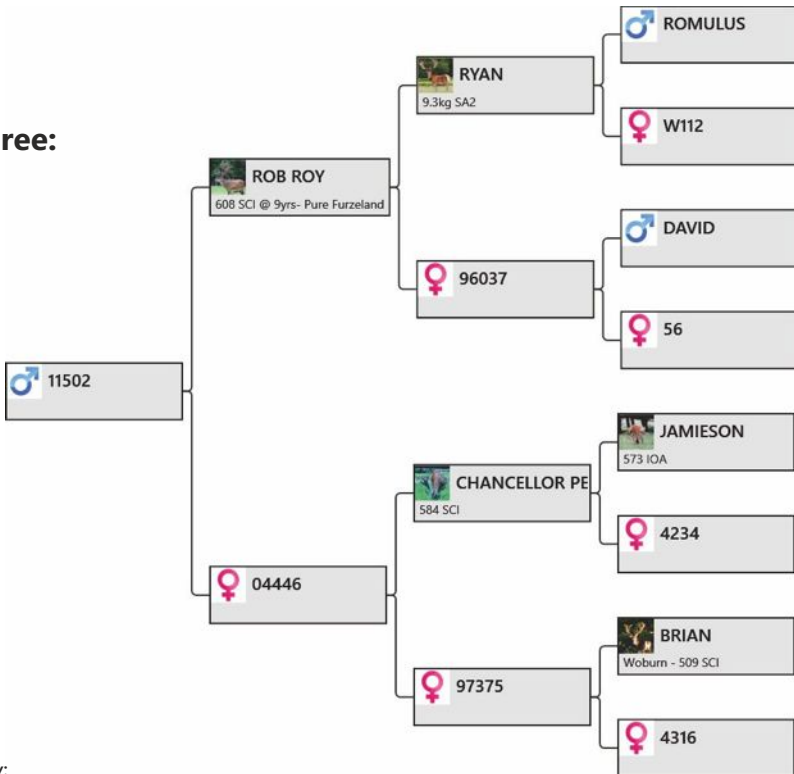
**Animal Tag:** 11502  
**Breed Type:** Pure English

**Yearling BV:** -3.6  
**Yearling Weight:** N/A  
**Weigh Date:** N/A  
**2yr Antler:** 2.6kg Velvet



**PEEL FOREST**  
ESTATE  
RED DEER GENETICS

## Pedigree:



## Biography:

502 has the Robroy shape and long tynes. His royals are just showing and should be long and attractive. Very strong Dam line with 4316 being full sister to Sandy II and 97375 dam of 2 sale stags.

**Sale Weight:**

**Price:**

**Buyer:**



# Lot # 30

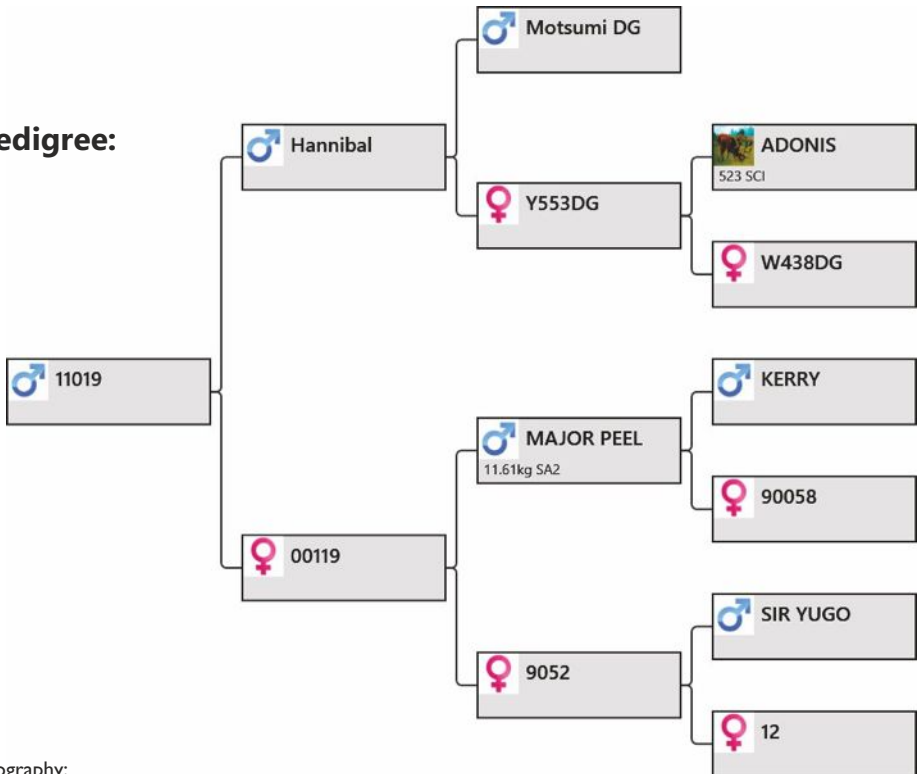
Animal Tag: 11019  
Breed Type: Trophy

Yearling BV: 6.08  
Yearling Weight: 108.6kg  
Weigh Date: 29/11/2012  
2yr Antler: 4.4kg HA



**PEEL FOREST**  
ESTATE  
RED DEER GENETICS

## Pedigree:



## Biography:

Very good lower tynes on this big guy with large crowns just splitting. As a 2 year old he had 30 points and 39 inch outside span. Dam 119 is dam of sale stag in 2010 sold to Dave Allen.

Sale Weight:

Price:

Buyer:



# Lot # 31

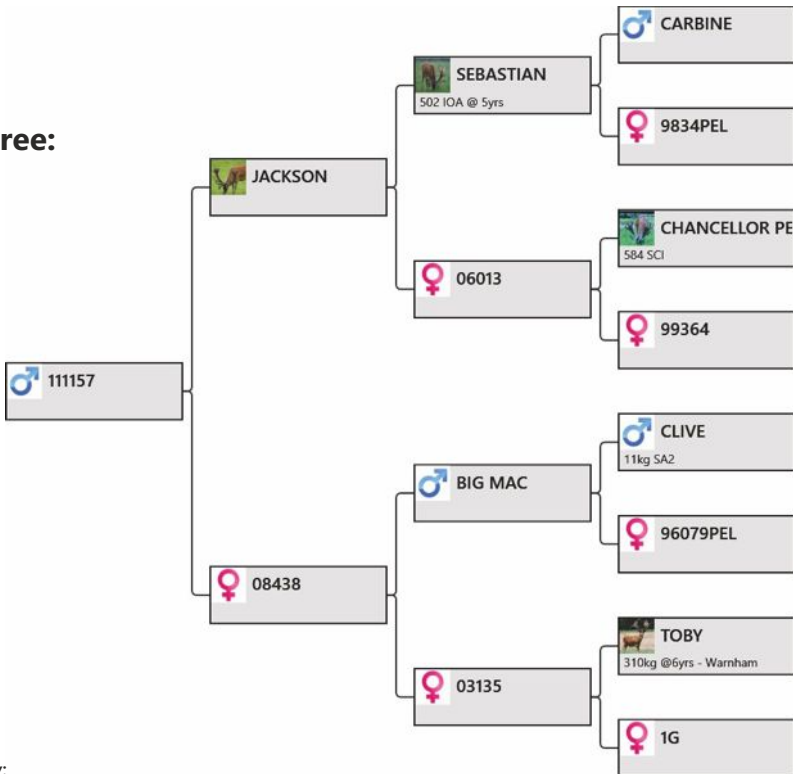
**Animal Tag:** 111157  
**Breed Type:** Pure English

**Yearling BV:** 2.36  
**Yearling Weight:** 104.8kg  
**Weigh Date:** 29/11/2012  
**2yr Antler:** 2.8kg Velvet



**PEEL FOREST**  
ESTATE  
RED DEER GENETICS

## Pedigree:



## Biography:

Another late head with good spread and beam. Just at OG velvet at this time. Will access closer to sale time.

**Sale Weight:**

**Price:**

**Buyer:**



# Lot # 32

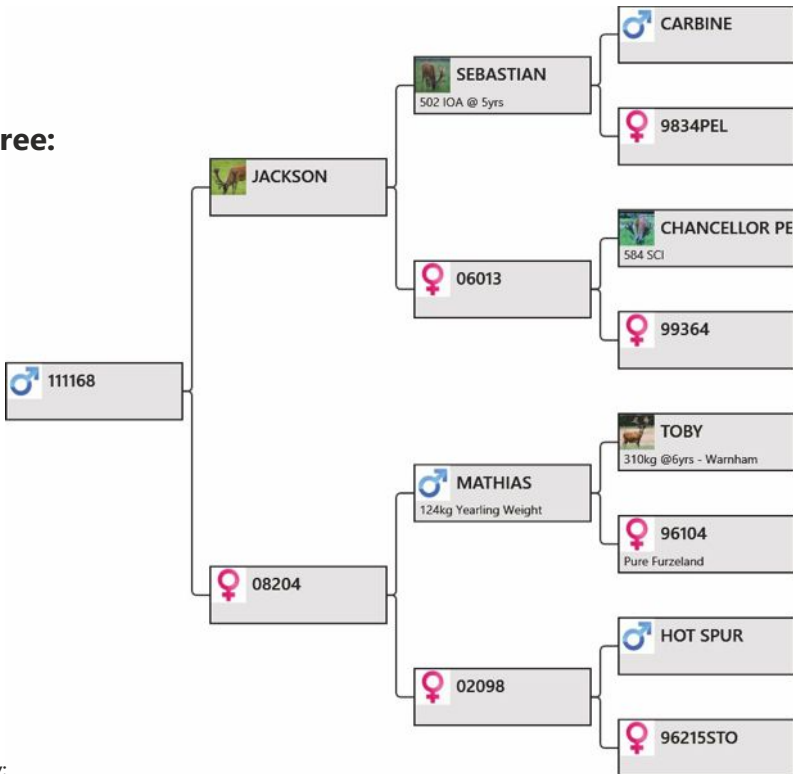
**Animal Tag:** 111168  
**Breed Type:** Pure English

**Yearling BV:** -1.73  
**Yearling Weight:** 108.6kg  
**Weigh Date:** 29/11/2012  
**2yr Antler:** 3kg SA2 Velvet



**PEEL FOREST**  
ESTATE  
RED DEER GENETICS

## Pedigree:



## Biography:

Very tidy, thick beamed head. Just at long top so a late developer that could surprise. Long even lower tynes.

**Sale Weight:**

**Price:**

**Buyer:**



# Lot # 33

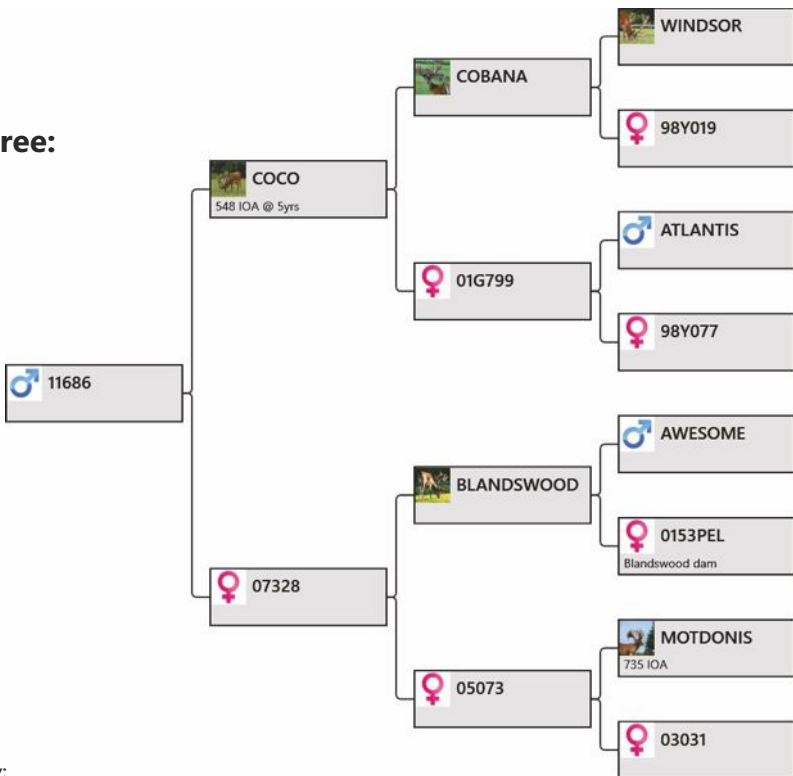
Animal Tag: 11686  
Breed Type: Trophy

Yearling BV: 2.28  
Yearling Weight: 111.5kg  
Weigh Date: 29/11/2012  
2yr Antler: 2.2kg Velvet



**PEEL FOREST**  
ESTATE  
RED DEER GENETICS

## Pedigree:



## Biography:

The latest head at catalogue time, so will have to access this guy to see if he stays in the sale. To date his head looks very good. Strong, long bottom tynes and very good beam and spread.

Sale Weight:

Price:

Buyer:







# You can rely on Reliance

## Deer Elite

Specially formulated to maximise velvet and trophy antlers for all stags and helps maintain body condition.

## Deer Performance

This high density feed is formulated to improve milk production and weight gain.

## Deer Conditioning

Designed for weight maintenance and for keeping condition on hinds and non-velveting stags during periods of low pasture quality and quantity.

Reliance Feed can be delivered bagged or bulk on-farm. For more information or to order, please contact us.

**Neville Hamilton**  
Regional Nutrition Specialist  
021 452 420  
neville.hamilton@farmlands.co.nz

**David Fairhall**  
Nutrition Specialist  
027 221 1265  
david.fairhall@farmlands.co.nz

0800 200 600 [www.farmlands.co.nz](http://www.farmlands.co.nz)



**RELIANCE**  
FEEDS

**Farmlands**  
Nutrition



# **We're right behind New Zealand's deer industry.**

In 1905 we got together to strike a better deal for farmers.  
Ever since then, we've stood by our clients and stared risk in the face.  
Maybe it's because we do things so differently that more farmers  
insure with us than anybody else.

**Ask around about us, or for some advice call 0800 366 466.**

*That's what works out here.*

**FMG**  
Advice & Insurance



# Downlands Deer

---

## & **STUDSTOCK**

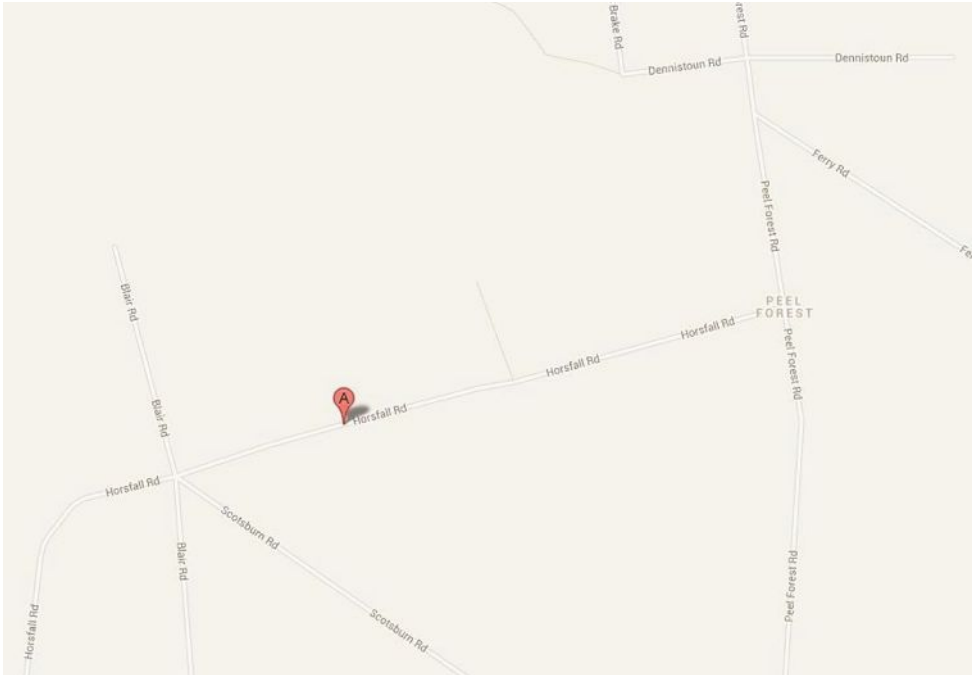
---



DOWNLANDS DEER SUPPORTING  
PEEL FOREST EST

PHONE 0800 163013 Office  
SATISFACTION GUARANTEED

# DIRECTIONS



## Directions to Peel Forest Estate from Christchurch:

Follow State Highway 1 through Ashburton south to Hinds. In the middle of Hinds turn right at the sign to Peel Forest, then 2nd left at sign to Peel Forest travelling along Hinds Arundel Rd approx. 15 km. At 'T' junction turn left onto Highway 72, go over bridge of Rangitata river and immediately turn right to Arundel. Up the hill and turn right to Peel Forest.

## Directions to Peel Forest Estate from Dunedin:

Travelling north from Dunedin, follow State Highway 1 through Timaru to Winchester, north of Temuka. Turn left to Geraldine following State Highway 72, through Geraldine, veering left after the one lane 'Orari Bridge', following sign to Peel Forest. Turn left to Peel Forest Rd after Coopers Creek Bridge and travel approx. 12km. Before you hit the 70km sign in Peel Forest you need to turn left up Horsefall Rd. Travel for approx. 1km and turn left up the long line of trees, which is the driveway to the Deer Shed.





# DELIVERY INSTRUCTIONS

**Purchaser:** \_\_\_\_\_

**Address:** \_\_\_\_\_  
\_\_\_\_\_  
\_\_\_\_\_

**Phone/Fax:** \_\_\_\_\_

**Email:** \_\_\_\_\_

## LOTS PURCHASED

Lot Number	Price	Lot Number	Price

**Total \$:** \_\_\_\_\_

**Forward Invoice To:** \_\_\_\_\_

**Insurance Required? YES / NO**

### **DELIVERY INSTRUCTIONS:**

**Destination:** \_\_\_\_\_  
\_\_\_\_\_

**Buyer/Agent Signature:** \_\_\_\_\_

**SPECIAL CONDITIONS**



PEEL FOREST  
ESTATE  
RED DEER GENETICS

STEVE BLANCHARD  
PEEL FOREST ESTATE  
1 BRAKE ROAD, RD 22, GERALDINE 7992  
NEW ZEALAND  
(027) 439 3418 / 0800 DEER4U  
steve@peelforestestate.com

[www.peelforestdeergenetics.com](http://www.peelforestdeergenetics.com)